

Product datasheet for **TA322996**

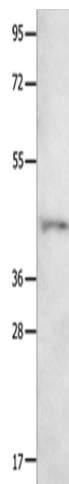
Neurotensin Receptor 1 (NTSR1) Rabbit Polyclonal Antibody

Product data:

Product Type:	Primary Antibodies
Applications:	WB
Recommended Dilution:	WB: 200-1000 WB positive control: 231 cells
Reactivity:	Human
Host:	Rabbit
Isotype:	IgG
Clonality:	Polyclonal
Immunogen:	Synthetic peptide corresponding to a region derived from 402-418 amino acids of Human neurotensin receptor 1 (high affinity)
Formulation:	PBS pH7.3, 0.05% NaN ₃ , 50% glycerol
Concentration:	lot specific
Purification:	Antigen affinity purification
Conjugation:	Unconjugated
Storage:	Store at -20°C as received.
Stability:	Stable for 12 months from date of receipt.
Predicted Protein Size:	46 kDa
Gene Name:	neurotensin receptor 1 (high affinity)
Database Link:	NP_002522 Entrez Gene 4923 Human P30989
Background:	Neurotensin receptor 1 belongs to the large superfamily of G-protein coupled receptors. NTSR1 mediates the multiple functions of neurotensin; such as hypotension; hyperglycemia; hypothermia; antinociception; and regulation of intestinal motility and secretion.?
Synonyms:	NTR
Protein Families:	Druggable Genome, GPCR, Transmembrane
Protein Pathways:	Calcium signaling pathway, Neuroactive ligand-receptor interaction



[View online »](#)

Product images:

Gel: 10+12%SDS-PAGE

Lysate: 40 μ g

Lane: 231 cells

Primary antibody: TA322996 (NTSR1 Antibody) at dilution 1/800

Secondary antibody: Goat anti rabbit IgG at 1/8000 dilution

Exposure time: 5 minutes