

## Product datasheet for **TA322988S**

### PAR4 (PAWR) Rabbit Polyclonal Antibody

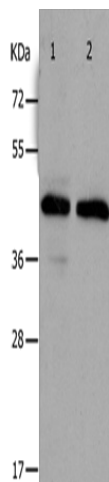
#### Product data:

Product Type:	Primary Antibodies
Applications:	WB
Recommended Dilution:	WB: 500-2000 WB positive control: Hela and A549 cells
Reactivity:	Human
Host:	Rabbit
Isotype:	IgG
Clonality:	Polyclonal
Immunogen:	Synthetic peptide peptide corresponding to a region derived from 136-278 amino acids of human PRKC, apoptosis, WT1, regulator
Formulation:	PBS pH7.3, 0.05% NaN <sub>3</sub> , 50% glycerol
Purification:	Antigen affinity purification
Conjugation:	Unconjugated
Storage:	Store at -20°C as received.
Stability:	Stable for 12 months from date of receipt.
Predicted Protein Size:	37 kDa
Gene Name:	pro-apoptotic WT1 regulator
Database Link:	<a href="#">NP_002574</a> <a href="#">Entrez Gene 5074 Human</a> <a href="#">Q96IZ0</a>
Background:	The tumor suppressor WT1 represses and activates transcription. The protein encoded by this gene is a WT1-interacting protein that itself functions as a transcriptional repressor. It contains a putative leucine zipper domain which interacts with the zinc finger DNA binding domain of WT1. This protein is specifically upregulated during apoptosis of prostate cells.?
Synonyms:	Par-4; PAR4
Protein Families:	Druggable Genome, Transcription Factors



[View online »](#)

## Product images:



Gel: 10%SDS-PAGE

Lysate: 30  $\mu$ g

Lane 1-2: HeLa cells

A549 cells

Primary antibody: [TA322988] (PAWR Antibody) at dilution 1/400

Secondary antibody: Goat anti rabbit IgG at 1/8000 dilution

Exposure time: 10 seconds