

## Product datasheet for **TA322986**

### PDGF AA (PDGFA) Rabbit Polyclonal Antibody

#### Product data:

Product Type:	Primary Antibodies
Applications:	IHC
Recommended Dilution:	IHC: 50-200 Positive control: Human ovarian cancer Predicted cell location: Cytoplasm
Reactivity:	Human, Mouse, Rat
Host:	Rabbit
Isotype:	IgG
Clonality:	Polyclonal
Immunogen:	Synthetic peptide corresponding to a region derived from 101-114 amino acids of Human platelet-derived growth factor alpha polypeptide
Formulation:	PBS pH7.3, 0.05% NaN <sub>3</sub> , 50% glycerol
Concentration:	lot specific
Purification:	Antigen affinity purification
Conjugation:	Unconjugated
Storage:	Store at -20°C as received.
Stability:	Stable for 12 months from date of receipt.
Gene Name:	platelet derived growth factor subunit A
Database Link:	<a href="#">NP_002598</a> <a href="#">Entrez Gene 18590 Mouse</a> <a href="#">Entrez Gene 25266 Rat</a> <a href="#">Entrez Gene 5154 Human</a> <a href="#">P04085</a>



[View online »](#)

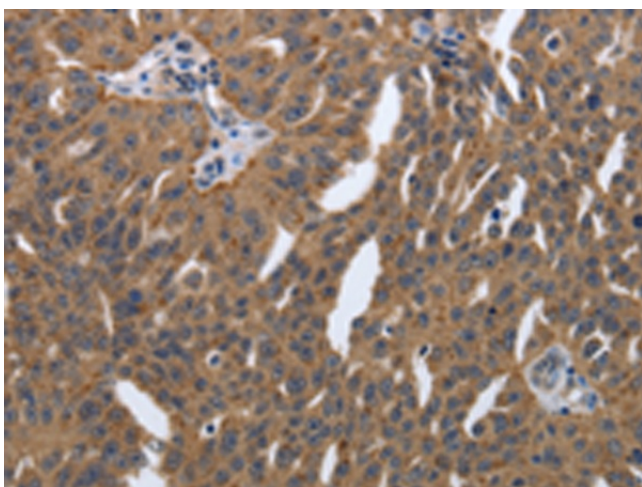
**Background:** The protein encoded by this gene is a member of the platelet-derived growth factor family. The four members of this family are mitogenic factors for cells of mesenchymal origin and are characterized by a motif of eight cysteines. This gene product can exist either as a homodimer or as a heterodimer with the platelet-derived growth factor beta polypeptide; where the dimers are connected by disulfide bonds. Studies using knockout mice have shown cellular defects in oligodendrocytes; alveolar smooth muscle cells; and Leydig cells in the testis; knockout mice die either as embryos or shortly after birth. Two splice variants have been identified for this gene.

**Synonyms:** PDGF-A; PDGF1

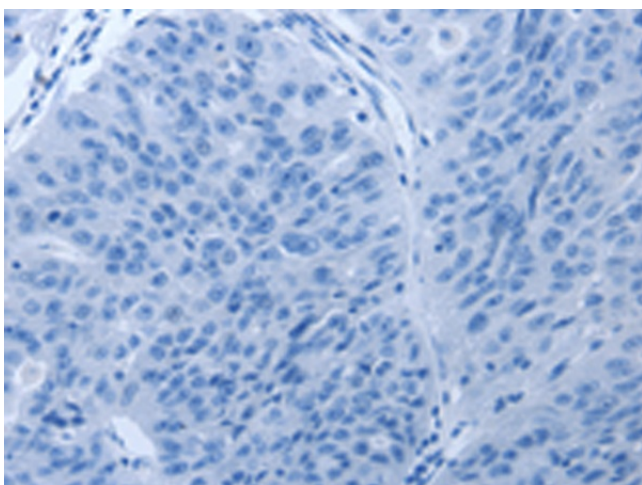
**Protein Families:** Druggable Genome

**Protein Pathways:** Cytokine-cytokine receptor interaction, Focal adhesion, Gap junction, Glioma, MAPK signaling pathway, Melanoma, Pathways in cancer, Prostate cancer, Regulation of actin cytoskeleton

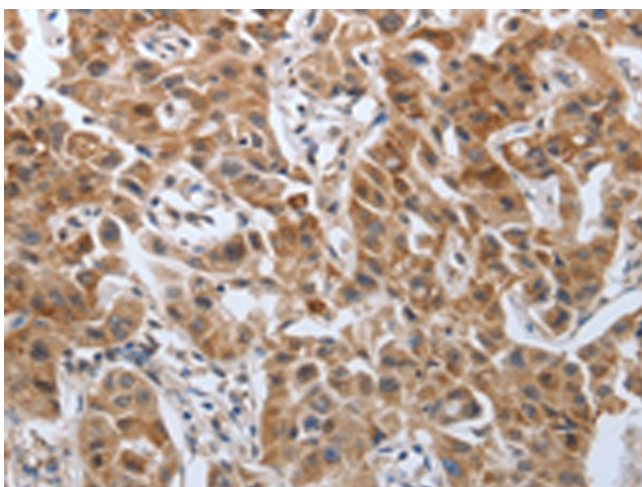
### Product images:



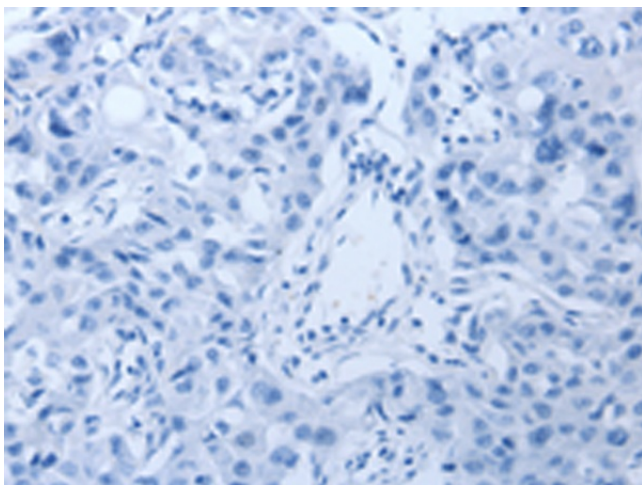
Immunohistochemistry of paraffin-embedded Human ovarian cancer tissue using TA322986 (PDGFA Antibody) at dilution 1/40 (Original magnification:  $\times 200$ )



Immunohistochemistry of paraffin-embedded Human ovarian cancer tissue using TA322986 (PDGFA Antibody) at dilution 1/40, treated with synthetic peptide. (Original magnification:  $\times 200$ )



Immunohistochemistry of paraffin-embedded Human lung cancer tissue using TA322986 (PDGFA Antibody) at dilution 1/40 (Original magnification:  $\times 200$ )



Immunohistochemistry of paraffin-embedded Human lung cancer tissue using TA322986 (PDGFA Antibody) at dilution 1/40, treated with synthetic peptide. (Original magnification:  $\times 200$ )