

Product datasheet for **TA322984**

PDCD2 Rabbit Polyclonal Antibody

Product data:

Product Type:	Primary Antibodies
Applications:	IHC, WB
Recommended Dilution:	WB: 200-1000 WB positive control: Hela cells IHC: 25-100 Positive control: Human ovarian cancer Predicted cell location: Cytoplasm
Reactivity:	Human, Mouse, Rat
Host:	Rabbit
Isotype:	IgG
Clonality:	Polyclonal
Immunogen:	Synthetic peptide corresponding to a region derived from 330-344 amino acids of Human programmed cell death 2
Formulation:	PBS pH7.3, 0.05% NaN ₃ , 50% glycerol
Concentration:	lot specific
Purification:	Antigen affinity purification
Conjugation:	Unconjugated
Storage:	Store at -20°C as received.
Stability:	Stable for 12 months from date of receipt.
Predicted Protein Size:	39 kDa
Gene Name:	programmed cell death 2
Database Link:	NP_002589 Entrez Gene 18567 Mouse Entrez Gene 58934 Rat Entrez Gene 5134 Human Q16342



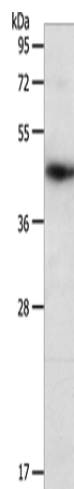
[View online »](#)

Background:

This gene encodes a nuclear protein expressed in a variety of tissues. Expression of this gene has been shown to be repressed by B-cell CLL/lymphoma 6 (BCL6), a transcriptional repressor required for lymph node germinal center development, suggesting that BCL6 regulates apoptosis by its effects on this protein. Alternative splicing results in multiple transcript variants and pseudogenes have been identified on chromosomes 9 and 12.

Synonyms:

RP8; ZMYND7

Product images:

Gel: 10%SDS-PAGE

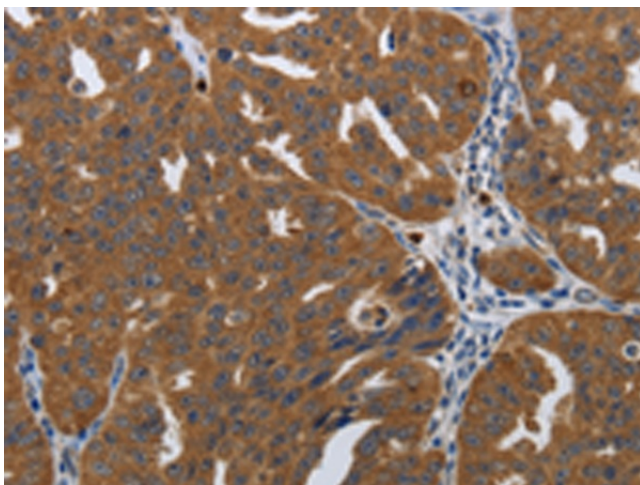
Lysate: 40 µg

Lane: HeLa cells

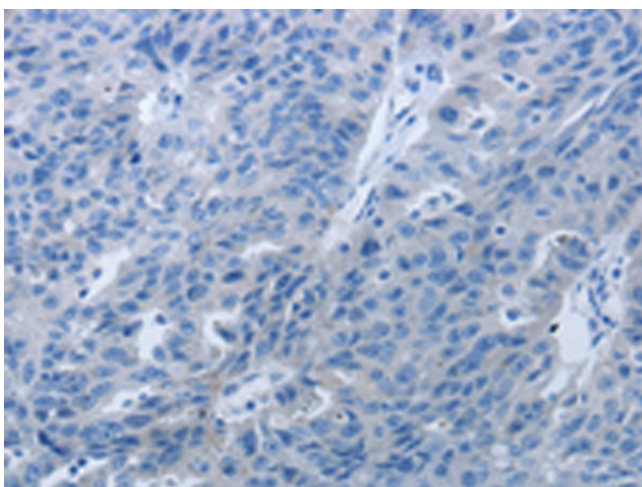
Primary antibody: TA322984 (PDCD2 Antibody) at dilution 1/200

Secondary antibody: Goat anti rabbit IgG at 1/8000 dilution

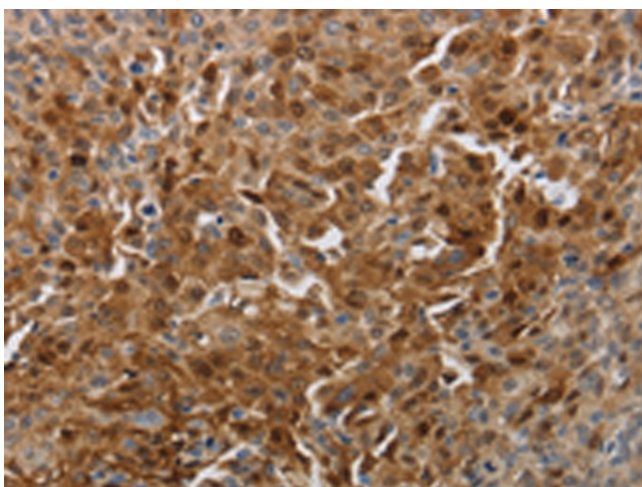
Exposure time: 20 seconds



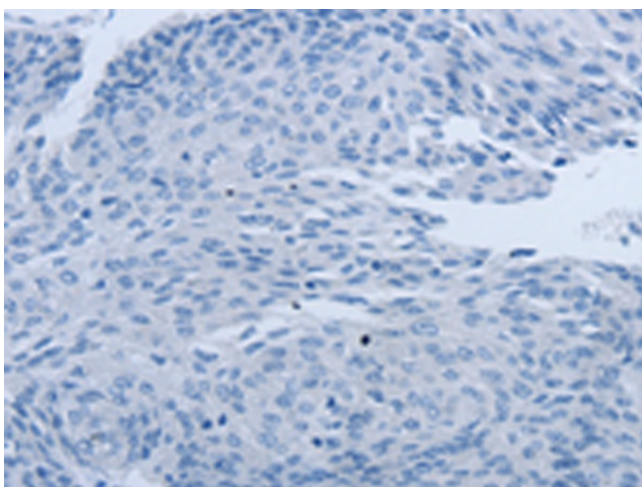
Immunohistochemistry of paraffin-embedded Human ovarian cancer tissue using TA322984 (PDCD2 Antibody) at dilution 1/10 (Original magnification: ×200)



Immunohistochemistry of paraffin-embedded Human ovarian cancer tissue using TA322984 (PDCD2 Antibody) at dilution 1/10, treated with synthetic peptide. (Original magnification: ×200)



Immunohistochemistry of paraffin-embedded Human cervical cancer tissue using TA322984 (PDCD2 Antibody) at dilution 1/10 (Original magnification: ×200)



Immunohistochemistry of paraffin-embedded Human cervical cancer tissue using TA322984 (PDCD2 Antibody) at dilution 1/10, treated with synthetic peptide. (Original magnification: ×200)