

Product datasheet for **TA322981**

MASPIN (SERPINB5) Rabbit Polyclonal Antibody

Product data:

| | |
|-------------------------|---|
| Product Type: | Primary Antibodies |
| Applications: | IHC, WB |
| Recommended Dilution: | WB: 500-2000 WB positive control: Mouse lung tissue IHC: 100-300 Positive control: Human esophagus cancer Predicted cell location: Cytoplasm, Nucleus |
| Reactivity: | Human, Mouse |
| Host: | Rabbit |
| Isotype: | IgG |
| Clonality: | Polyclonal |
| Immunogen: | Full length fusion protein |
| Formulation: | PBS pH7.3, 0.05% NaN ₃ , 50% glycerol |
| Concentration: | lot specific |
| Purification: | Antigen affinity purification |
| Conjugation: | Unconjugated |
| Storage: | Store at -20°C as received. |
| Stability: | Stable for 12 months from date of receipt. |
| Predicted Protein Size: | 42 kDa |
| Gene Name: | serpin family B member 5 |
| Database Link: | NP_002630 Entrez Gene 20724 Mouse Entrez Gene 5268 Human P36952 |



[View online »](#)

Background:

Maspin (mammary serine protease inhibitor) also known as serpin B5 is a protein that in humans is encoded by the SERPINB5 gene.[1] This protein belongs to the serpin (serine protease inhibitor) superfamily.[1] SERPINB5 also functions as a tumor suppressor gene in epithelial cells. The expressed protein suppresses the ability of cancer cells to invade and metastasize other tissues. The protein also functions as an angiogenesis inhibitor. It blocks the growth; invasion; and metastatic properties of mammary tumors. As it does not undergo the S (stressed) to R (relaxed) conformational transition characteristic of active serpins; it exhibits no serine protease inhibitory activity.

Synonyms:

maspin; PI5

Protein Families:

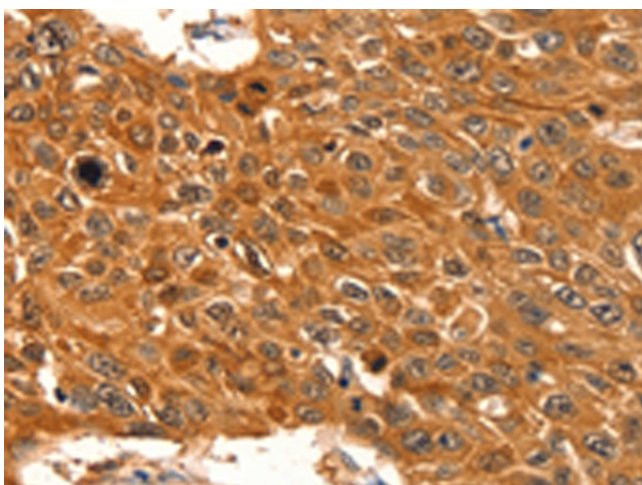
Druggable Genome, Secreted Protein

Protein Pathways:

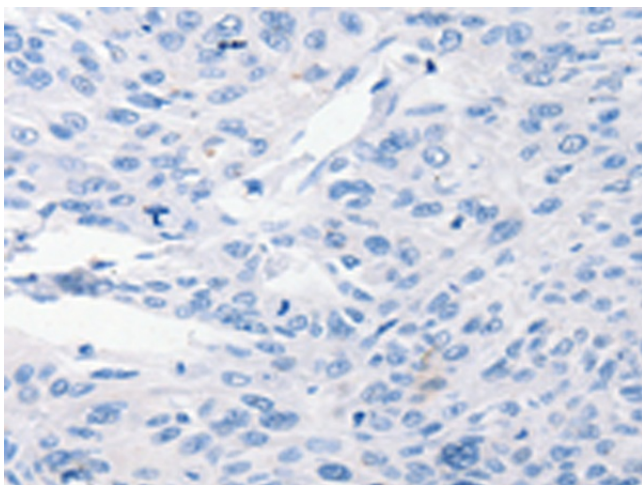
p53 signaling pathway

Product images:

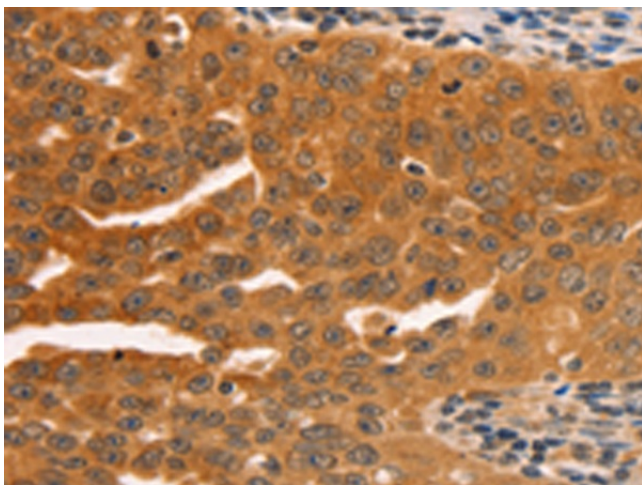
Gel: 12%SDS-PAGE
Lysate: 40 µg
Lane: Mouse lung tissue
Primary antibody: TA322981 (SERPINB5 Antibody) at dilution 1/1000
Secondary antibody: Goat anti rabbit IgG at 1/8000 dilution
Exposure time: 10 seconds



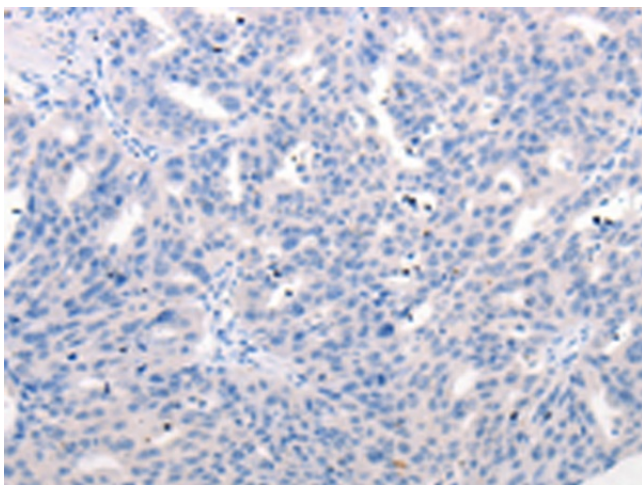
Immunohistochemistry of paraffin-embedded Human esophagus cancer tissue using TA322981 (SERPINB5 Antibody) at dilution 1/60 (Original magnification: ×200)



Immunohistochemistry of paraffin-embedded Human esophagus cancer tissue using TA322981 (SERPINB5 Antibody) at dilution 1/60, treated with fusion protein. (Original magnification: x200)



Immunohistochemistry of paraffin-embedded Human ovarian cancer tissue using TA322981 (SERPINB5 Antibody) at dilution 1/60 (Original magnification: x200)



Immunohistochemistry of paraffin-embedded Human ovarian cancer tissue using TA322981 (SERPINB5 Antibody) at dilution 1/60, treated with fusion protein. (Original magnification: x200)