

## Product datasheet for **TA322979S**

### PKM2 (PKM) Rabbit Polyclonal Antibody

#### Product data:

Product Type:	Primary Antibodies
Applications:	IHC, WB
Recommended Dilution:	WB: 500-2000 WB positive control: Hela cells IHC: 50-200 Positive control: Human cervical cancer Predicted cell location: Cytoplasm
Reactivity:	Human, Mouse, Rat
Host:	Rabbit
Isotype:	IgG
Clonality:	Polyclonal
Immunogen:	Fusion protein corresponding to a region derived from 11-221 amino acids of Human Pyruvate kinase isozymes M1/M2
Formulation:	PBS pH7.3, 0.05% NaN <sub>3</sub> , 50% glycerol
Purification:	Antigen affinity purification
Conjugation:	Unconjugated
Storage:	Store at -20°C as received.
Stability:	Stable for 12 months from date of receipt.
Predicted Protein Size:	58 kDa
Gene Name:	pyruvate kinase, muscle
Database Link:	<a href="#">NP_002645</a> <a href="#">Entrez Gene 18746 Mouse</a> <a href="#">Entrez Gene 25630 Rat</a> <a href="#">Entrez Gene 5315 Human</a> <a href="#">P14618</a>



[View online »](#)

**Background:**

This gene encodes a protein involved in glycolysis. The encoded protein is a pyruvate kinase that catalyzes the transfer of a phosphoryl group from phosphoenolpyruvate to ADP; generating ATP and Stimulates POU5F1-mediated transcriptional activation. Plays a general role in caspase independent cell death of tumor cells. This protein has been shown to interact with thyroid hormone and may mediate cellular metabolic effects induced by thyroid hormones. This protein has been found to bind Opa protein; a bacterial outer membrane protein involved in gonococcal adherence to and invasion of human cells; suggesting a role of this protein in bacterial pathogenesis.

**Synonyms:**

CTHBP; HEL-S-30; OIP3; PK3; PKM2; TCB; THBP1

**Protein Families:**

Druggable Genome

**Protein Pathways:**

Glycolysis / Gluconeogenesis, Metabolic pathways, Purine metabolism, Pyruvate metabolism, Type II diabetes mellitus

**Product images:**

Gel: 8%SDS-PAGE

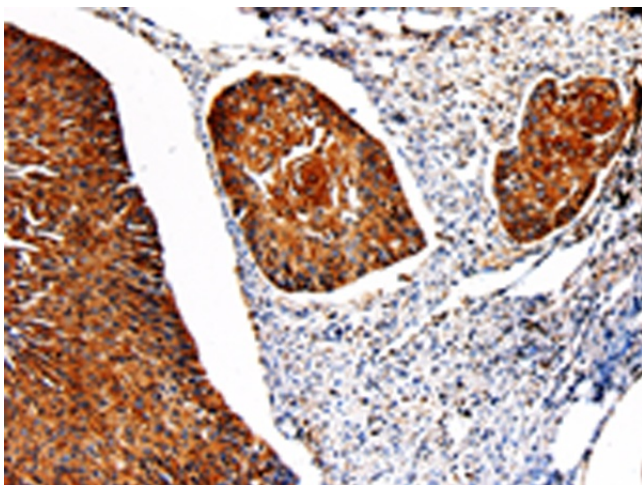
Lysate: 30 µg

Lane: HeLa cells

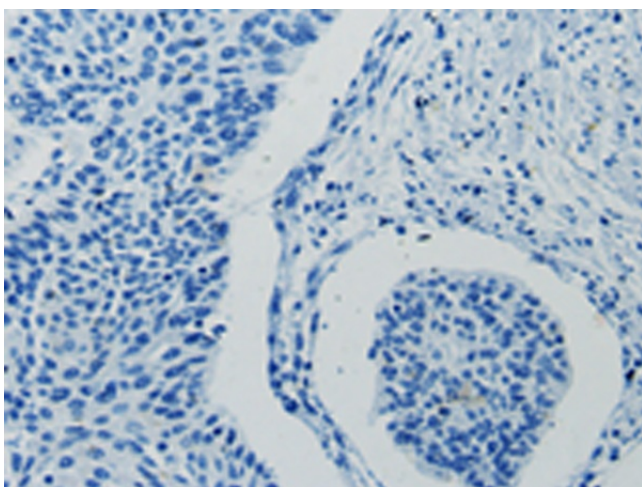
Primary antibody: [TA322979] (PKM Antibody) at dilution 1/450

Secondary antibody: Goat anti rabbit IgG at 1/8000 dilution

Exposure time: 5 seconds



Immunohistochemistry of paraffin-embedded Human cervical cancer tissue using [TA322979] (PKM Antibody) at dilution 1/50 (Original magnification:  $\times 200$ )



Immunohistochemistry of paraffin-embedded Human cervical cancer tissue using [TA322979] (PKM Antibody) at dilution 1/50, treated with fusion protein. (Original magnification:  $\times 200$ )