

## Product datasheet for **TA322977**

### PLCG 2 (PLCG2) Rabbit Polyclonal Antibody

#### Product data:

Product Type:	Primary Antibodies
Applications:	IF, WB
Recommended Dilution:	WB: 1:500-1000, IF: 1:100-200
Reactivity:	Human, Mouse, Rat
Host:	Rabbit
Isotype:	IgG
Clonality:	Polyclonal
Immunogen:	Peptide sequence around aa. 751~755 (S-L-Y-D-V) derived from Human PLC2.
Formulation:	PBS pH7.3, 0.05% NaN <sub>3</sub> , 50% glycerol
Concentration:	lot specific
Purification:	Antigen affinity purification
Conjugation:	Unconjugated
Storage:	Store at -20°C as received.
Stability:	Stable for 12 months from date of receipt.
Predicted Protein Size:	148 kDa
Gene Name:	phospholipase C gamma 2
Database Link:	<a href="#">NP_002652</a> <a href="#">Entrez Gene 29337 Rat</a> <a href="#">Entrez Gene 234779 Mouse</a> <a href="#">Entrez Gene 5336 Human</a> <a href="#">P16885</a>
Background:	The production of the second messenger molecules diacylglycerol. (DAG) and inositol 1,4,5-trisphosphate (IP3) is mediated by activated phosphatidylinositol-specific phospholipase C enzymes. It is a crucial enzyme in transmembrane signaling.
Synonyms:	APLAID; FCAS3; PLC-gamma-2; PLC-IV
Protein Families:	Druggable Genome

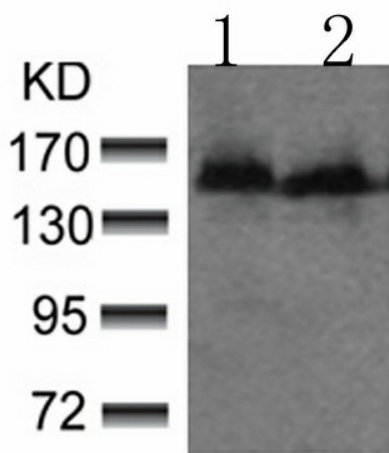


[View online »](#)

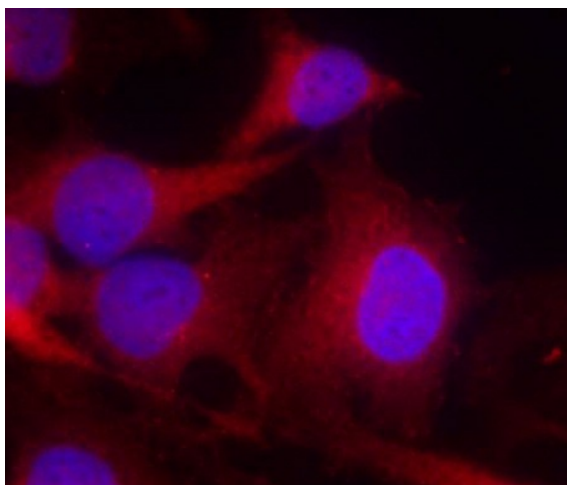
**Protein Pathways:**

B cell receptor signaling pathway, Calcium signaling pathway, Epithelial cell signaling in Helicobacter pylori infection, ErbB signaling pathway, Fc epsilon RI signaling pathway, Fc gamma R-mediated phagocytosis, Glioma, Inositol phosphate metabolism, Leukocyte transendothelial migration, Metabolic pathways, Natural killer cell mediated cytotoxicity, Neurotrophin signaling pathway, Non-small cell lung cancer, Pathways in cancer, Phosphatidylinositol signaling system, VEGF signaling pathway, Vibrio cholerae infection

**Product images:**



Predicted band size: 148 kDa. Positive control: 293 and 3T3 cells lysate. Recommended dilution: 1/ 500-1000. (Gel: 8%SDS-PAGE Lane 1, 2: 293 and 3T3 cells lysate Lysates: 30 ug per lane Primary antibody: 1/500 dilution Secondary antibody: Goat anti Rabbit IgG - H&L (HRP) at 1/10000 dilution Exposure time: 1 minute)



Predicted cell location: Cytoplasm. Positive control: HeLa cells. Recommended dilution: 1/ 100-200. The image is immunofluorescence of methanol-fixed HeLa cells using PLCG2 antibody at dilution 1/100. (Original magnification: ×200)