

## Product datasheet for **TA322970S**

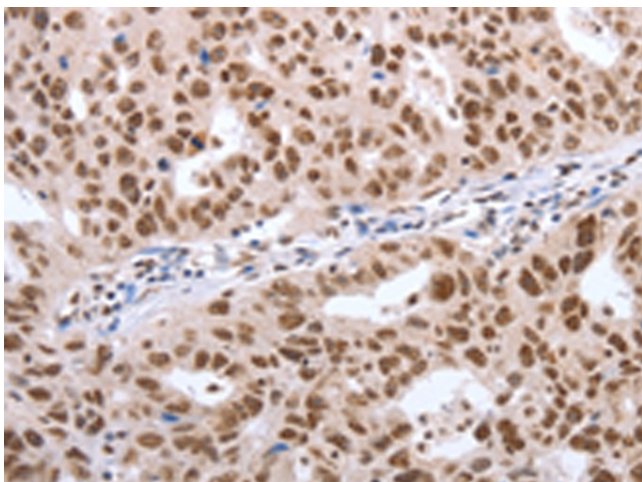
### Oct6 (POU3F1) Rabbit Polyclonal Antibody

#### Product data:

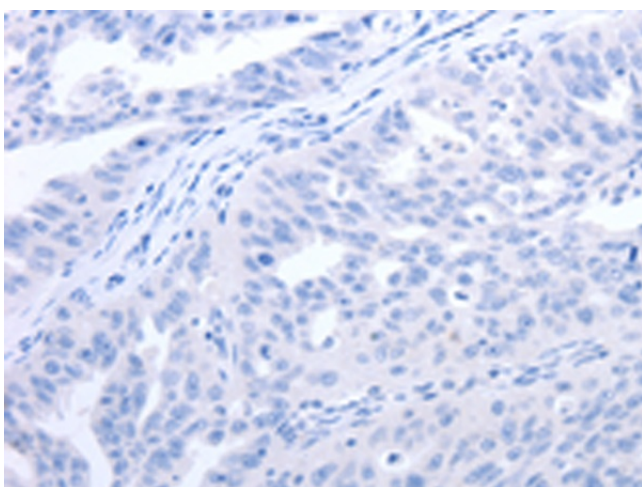
Product Type:	Primary Antibodies
Applications:	IHC
Recommended Dilution:	IHC: 50-200 Positive control: Human ovarian cancer Predicted cell location: Nucleus
Reactivity:	Human, Mouse, Rat
Host:	Rabbit
Isotype:	IgG
Clonality:	Polyclonal
Immunogen:	Synthetic peptide corresponding to N terminal 13 amino acids of human POU class 3 homeobox 1
Formulation:	PBS pH7.3, 0.05% NaN <sub>3</sub> , 50% glycerol
Purification:	Antigen affinity purification
Conjugation:	Unconjugated
Storage:	Store at -20°C as received.
Stability:	Stable for 12 months from date of receipt.
Gene Name:	POU class 3 homeobox 1
Database Link:	<a href="#">NP_002690</a> <a href="#">Entrez Gene 18991 Mouse</a> <a href="#">Entrez Gene 192110 Rat</a> <a href="#">Entrez Gene 5453 Human</a> <a href="#">Q03052</a>
Background:	This gene belongs to the POU transcription factor family. Class-3 subfamily. It is transcription factor that binds to the octamer motif (5'-ATTTGCAT-3'). Thought to be involved in early embryogenesis and neurogenesis. Mostly expressed in embryonal stem cells and in the developing brain.
Synonyms:	OCT6; OTF6; SCIP
Protein Families:	Transcription Factors



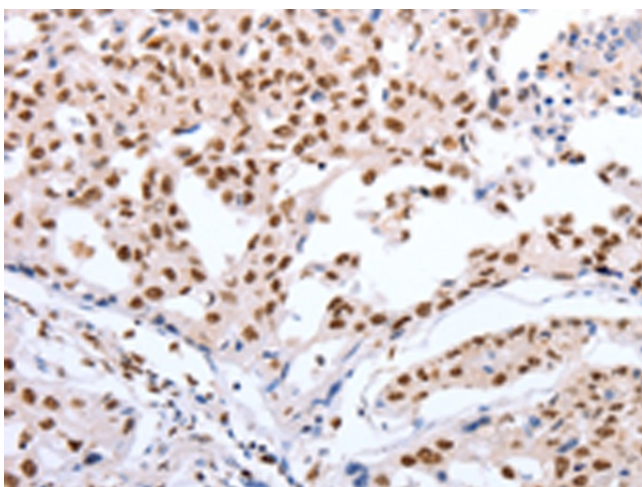
[View online »](#)

**Product images:**

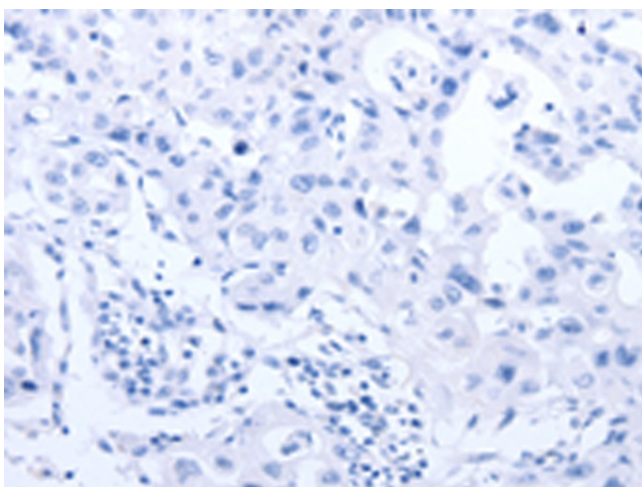
Immunohistochemistry of paraffin-embedded Human ovarian cancer tissue using [TA322970] (POU3F1 Antibody) at dilution 1/40 (Original magnification:  $\times 200$ )



Immunohistochemistry of paraffin-embedded Human ovarian cancer tissue using [TA322970] (POU3F1 Antibody) at dilution 1/40, treated with synthetic peptide. (Original magnification:  $\times 200$ )



Immunohistochemistry of paraffin-embedded Human lung cancer tissue using [TA322970] (POU3F1 Antibody) at dilution 1/40 (Original magnification:  $\times 200$ )



Immunohistochemistry of paraffin-embedded Human lung cancer tissue using [TA322970] (POU3F1 Antibody) at dilution 1/40, treated with synthetic peptide. (Original magnification:  $\times 200$ )