

## Product datasheet for **TA322967S**

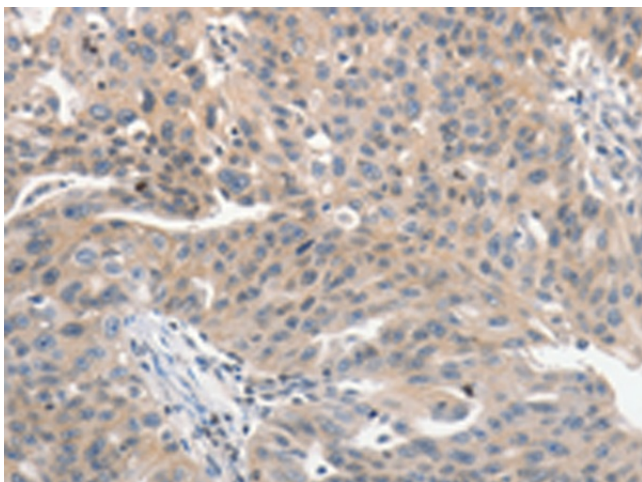
### PKC mu (PRKD1) Rabbit Polyclonal Antibody

#### Product data:

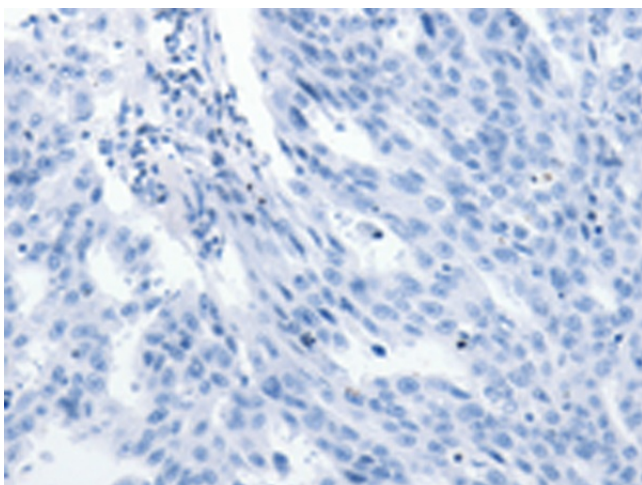
Product Type:	Primary Antibodies
Applications:	IHC
Recommended Dilution:	IHC: 50-200 Positive control: Human ovarian cancer Predicted cell location: Cytoplasm
Reactivity:	Human, Mouse, Rat
Host:	Rabbit
Isotype:	IgG
Clonality:	Polyclonal
Immunogen:	Synthetic peptide corresponding to a region derived from 899-912 amino acids of Human protein kinase D1
Formulation:	PBS pH7.3, 0.05% NaN <sub>3</sub> , 50% glycerol
Purification:	Antigen affinity purification
Conjugation:	Unconjugated
Storage:	Store at -20°C as received.
Stability:	Stable for 12 months from date of receipt.
Gene Name:	protein kinase D1
Database Link:	<a href="#">NP_002733</a> <a href="#">Entrez Gene 18760 Mouse</a> <a href="#">Entrez Gene 85421 Rat</a> <a href="#">Entrez Gene 5587 Human</a> <a href="#">Q15139</a>
Background:	PRKD1 is a serine/threonine kinase that regulates a variety of cellular functions; including membrane receptor signaling; transport at the Golgi; protection from oxidative stress at the mitochondria; gene transcription; and regulation of cell shape; motility; and adhesion
Synonyms:	PKC-MU; PKCM; PKD; PRKCM
Protein Families:	Druggable Genome, Protein Kinase



[View online »](#)

**Product images:**

Immunohistochemistry of paraffin-embedded Human ovarian cancer tissue using [TA322967] (PRKD1 Antibody) at dilution 1/70 (Original magnification: ×200)



Immunohistochemistry of paraffin-embedded Human ovarian cancer tissue using [TA322967] (PRKD1 Antibody) at dilution 1/70, treated with synthetic peptide. (Original magnification: ×200)