

Product datasheet for **TA322966S**

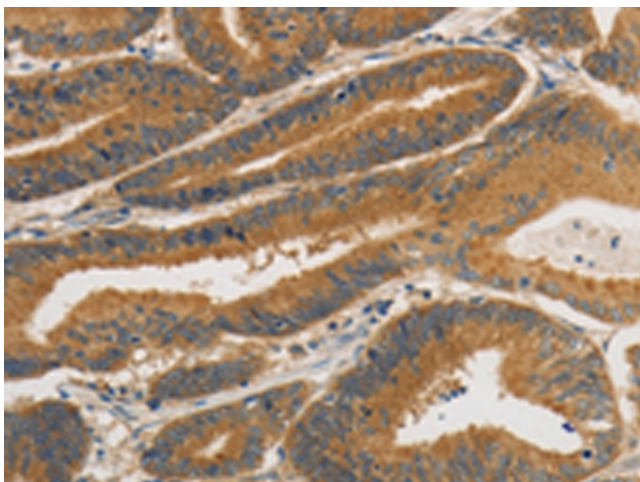
PKC mu (PRKD1) Rabbit Polyclonal Antibody

Product data:

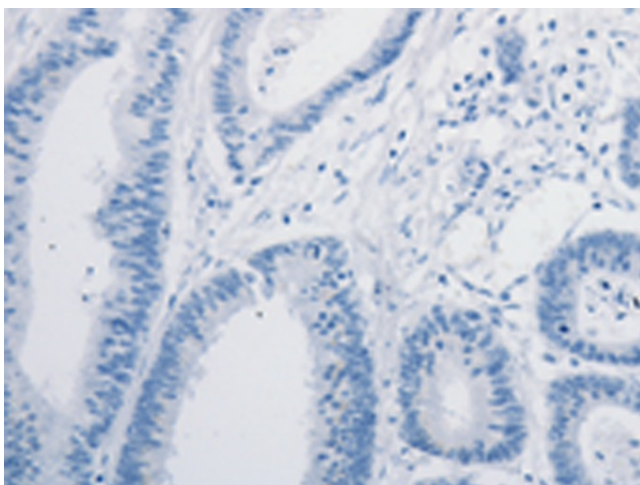
Product Type:	Primary Antibodies
Applications:	IHC
Recommended Dilution:	IHC: 50-200 Positive control: Human colon cancer Predicted cell location: Cytoplasm
Reactivity:	Human, Mouse, Rat
Host:	Rabbit
Isotype:	IgG
Clonality:	Polyclonal
Immunogen:	Synthetic peptide corresponding to a region derived from 899-912 amino acids of Human protein kinase D1
Formulation:	PBS pH7.3, 0.05% NaN ₃ , 50% glycerol
Purification:	Antigen affinity purification
Conjugation:	Unconjugated
Storage:	Store at -20°C as received.
Stability:	Stable for 12 months from date of receipt.
Gene Name:	protein kinase D1
Database Link:	NP_002733 Entrez Gene 18760 Mouse Entrez Gene 85421 Rat Entrez Gene 5587 Human Q15139
Background:	PRKD1 is a serine/threonine kinase that regulates a variety of cellular functions; including membrane receptor signaling; transport at the Golgi; protection from oxidative stress at the mitochondria; gene transcription; and regulation of cell shape; motility; and adhesion
Synonyms:	PKC-MU; PKCM; PKD; PRKCM
Protein Families:	Druggable Genome, Protein Kinase



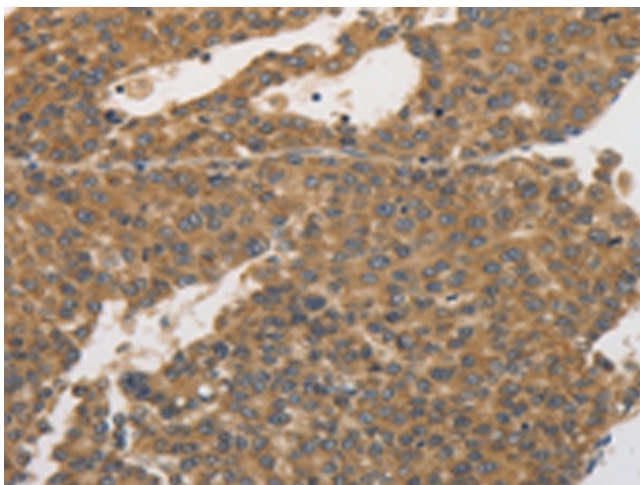
[View online »](#)

Product images:

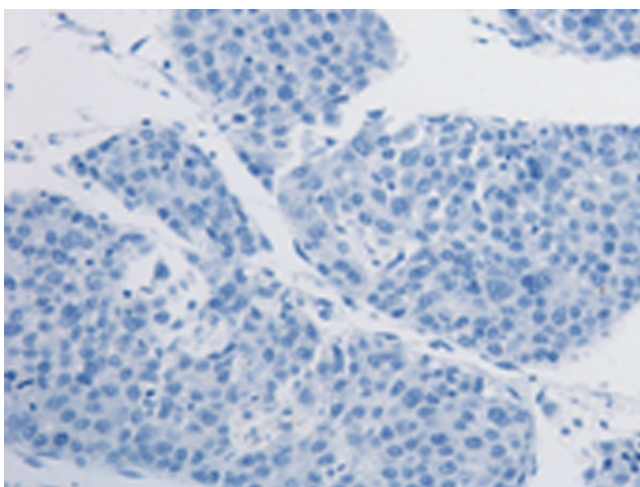
Immunohistochemistry of paraffin-embedded Human colon cancer tissue using [TA322966] (PRKD1 Antibody) at dilution 1/30 (Original magnification: $\times 200$)



Immunohistochemistry of paraffin-embedded Human colon cancer tissue using [TA322966] (PRKD1 Antibody) at dilution 1/30, treated with synthetic peptide. (Original magnification: $\times 200$)



Immunohistochemistry of paraffin-embedded Human liver cancer tissue using [TA322966] (PRKD1 Antibody) at dilution 1/30 (Original magnification: $\times 200$)



Immunohistochemistry of paraffin-embedded Human liver cancer tissue using [TA322966] (PRKD1 Antibody) at dilution 1/30, treated with synthetic peptide. (Original magnification: $\times 200$)