

Product datasheet for **TA322966**

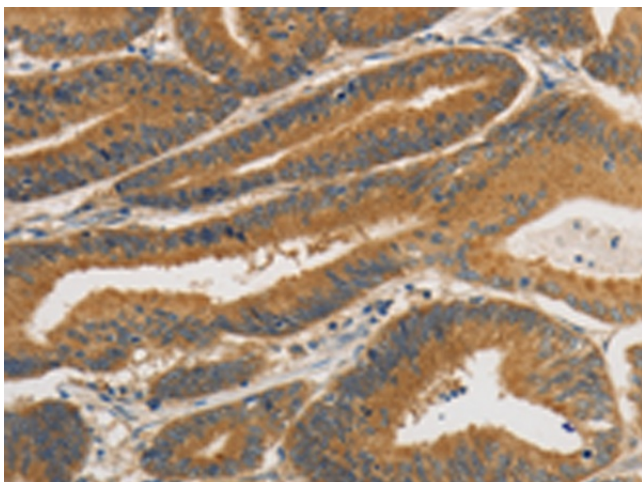
PKC mu (PRKD1) Rabbit Polyclonal Antibody

Product data:

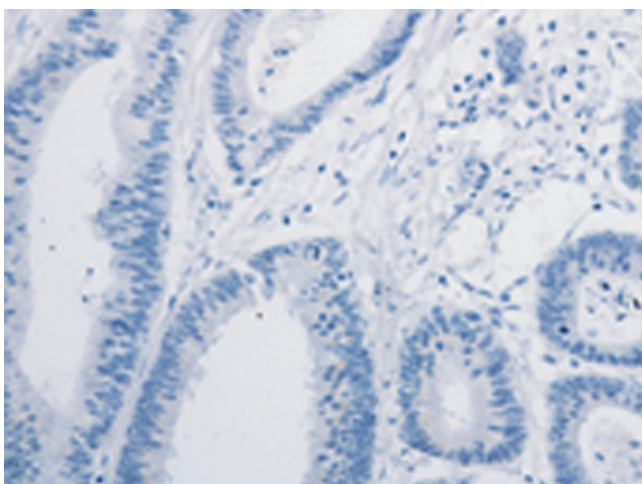
| | |
|-----------------------|--|
| Product Type: | Primary Antibodies |
| Applications: | IHC |
| Recommended Dilution: | IHC: 50-200 Positive control: Human colon cancer Predicted cell location: Cytoplasm |
| Reactivity: | Human, Mouse, Rat |
| Host: | Rabbit |
| Isotype: | IgG |
| Clonality: | Polyclonal |
| Immunogen: | Synthetic peptide corresponding to a region derived from 899-912 amino acids of Human protein kinase D1 |
| Formulation: | PBS pH7.3, 0.05% NaN ₃ , 50% glycerol |
| Concentration: | lot specific |
| Purification: | Antigen affinity purification |
| Conjugation: | Unconjugated |
| Storage: | Store at -20°C as received. |
| Stability: | Stable for 12 months from date of receipt. |
| Gene Name: | protein kinase D1 |
| Database Link: | NP_002733 Entrez Gene 18760 MouseEntrez Gene 85421 RatEntrez Gene 5587 Human Q15139 |
| Background: | PRKD1 is a serine/threonine kinase that regulates a variety of cellular functions; including membrane receptor signaling; transport at the Golgi; protection from oxidative stress at the mitochondria; gene transcription; and regulation of cell shape; motility; and adhesion |
| Synonyms: | PKC-MU; PKCM; PKD; PRKCM |
| Protein Families: | Druggable Genome, Protein Kinase |



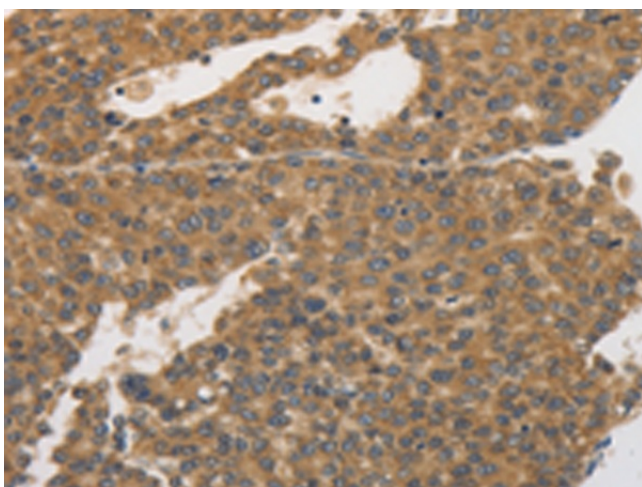
[View online »](#)

Product images:

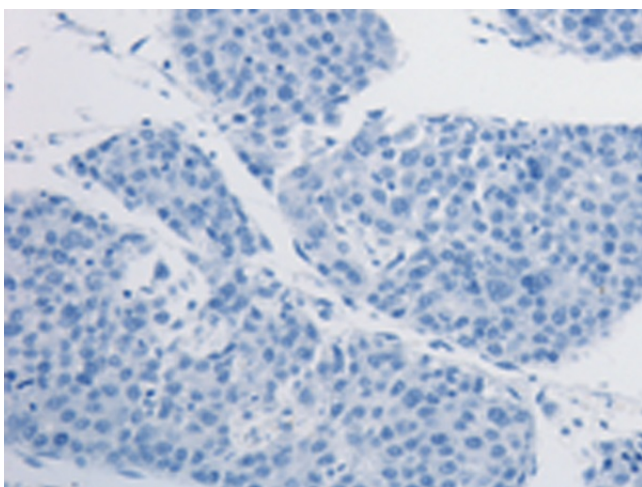
Immunohistochemistry of paraffin-embedded Human colon cancer tissue using TA322966 (PRKD1 Antibody) at dilution 1/30 (Original magnification: $\times 200$)



Immunohistochemistry of paraffin-embedded Human colon cancer tissue using TA322966 (PRKD1 Antibody) at dilution 1/30, treated with synthetic peptide. (Original magnification: $\times 200$)



Immunohistochemistry of paraffin-embedded Human liver cancer tissue using TA322966 (PRKD1 Antibody) at dilution 1/30 (Original magnification: $\times 200$)



Immunohistochemistry of paraffin-embedded Human liver cancer tissue using TA322966 (PRKD1 Antibody) at dilution 1/30, treated with synthetic peptide. (Original magnification: $\times 200$)