

Product datasheet for **TA322964**

PKC mu (PRKD1) Rabbit Polyclonal Antibody

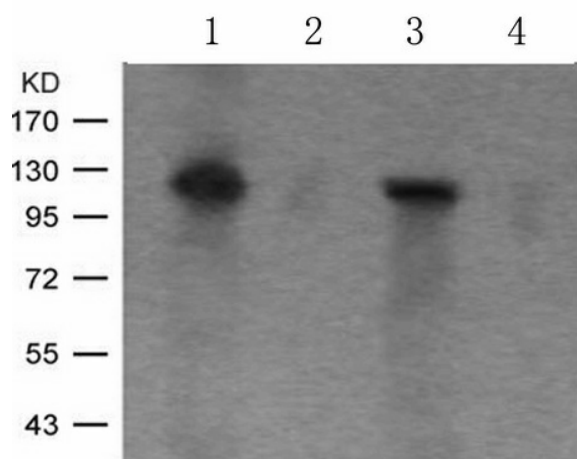
Product data:

Product Type:	Primary Antibodies
Applications:	IF, WB
Recommended Dilution:	WB: 1:500-1000, IF: 1:100-200
Reactivity:	Human, Mouse, Rat
Modifications:	Phospho-specific
Host:	Rabbit
Isotype:	IgG
Clonality:	Polyclonal
Immunogen:	Peptide sequence around phosphorylation site of serine 910 (R-V-S(p)-I-L) derived from Human PKD/PKC μ .
Formulation:	PBS pH7.3, 0.05% NaN ₃ , 50% glycerol
Concentration:	lot specific
Purification:	Antigen affinity purification
Conjugation:	Unconjugated
Storage:	Store at -20°C as received.
Stability:	Stable for 12 months from date of receipt.
Predicted Protein Size:	115 kDa
Gene Name:	protein kinase D1
Database Link:	NP_002733 Entrez Gene 18760 Mouse Entrez Gene 85421 Rat Entrez Gene 5587 Human Q15139
Background:	PRKD1 is a serine/threonine kinase that regulates a variety of cellular functions, including membrane receptor signaling, transport at the Golgi, protection from oxidative stress at the mitochondria, gene transcription, and regulation of cell shape, motility, and adhesion.
Synonyms:	PKC-MU; PKCM; PKD; PRKCM
Protein Families:	Druggable Genome, Protein Kinase

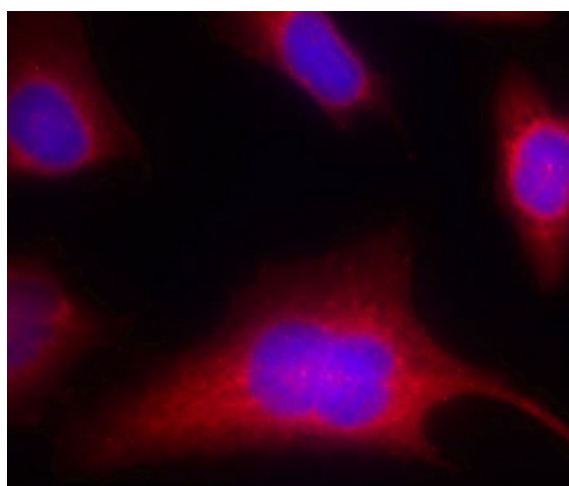


[View online »](#)

Product images:



Predicted band size: 115 kDa. Positive control: EGF-treated 293 and PMA-treated HUVEC cells lysate. Recommended dilution: 1/ 500-1000. (Gel: 8%SDS-PAGE Lane 1: EGF-treated 293 cells lysate Lane 2: Untreated 293 cells lysate Lane 3: PMA-treated HUVEC cells lysate Lane 4: Untreated HUVEC cells lysate Lysate: 30 ug per lane Primary antibody: 1/500 dilution Secondary antibody: Goat anti Rabbit IgG - H&L (HRP) at 1/10000 dilution Exposure time: 1 minute)



Predicted cell location: Cytoplasm; Cell membrane. Positive control: HeLa cells. Recommended dilution: 1/ 100-200. The image is immunofluorescence of methanol-fixed HeLa cells using PRKD1 (Phospho-Ser910) antibody at dilution 1/100. (Original magnification: ×200)