

Product datasheet for **TA322957**

PSMB9 Rabbit Polyclonal Antibody

Product data:

Product Type:	Primary Antibodies
Applications:	WB
Recommended Dilution:	WB: 1:500-2000
Reactivity:	Human, Mouse, Rat
Host:	Rabbit
Isotype:	IgG
Clonality:	Polyclonal
Immunogen:	Full length fusion protein
Formulation:	PBS pH7.3, 0.05% NaN ₃ , 50% glycerol
Concentration:	lot specific
Purification:	Antigen affinity purification
Conjugation:	Unconjugated
Storage:	Store at -20°C as received.
Stability:	Stable for 12 months from date of receipt.
Predicted Protein Size:	23 kDa
Gene Name:	proteasome subunit beta 9
Database Link:	NP_002791 Entrez Gene 16912 Mouse Entrez Gene 24967 Rat Entrez Gene 5698 Human P28065



[View online »](#)

Background:

The proteasome is a multicatalytic proteinase complex with a highly ordered ring-shaped 20S core structure. The core structure is composed of 4 rings of 28 non-identical subunits; 2 rings are composed of 7 alpha subunits and 2 rings are composed of 7 beta subunits. Proteasomes are distributed throughout eukaryotic cells at a high concentration and cleave peptides in an ATP/ubiquitin-dependent process in a non-lysosomal pathway. An essential function of a modified proteasome, the immunoproteasome, is the processing of class I MHC peptides. This gene encodes a member of the proteasome B-type family, also known as the T1B family, that is a 20S core beta subunit. This gene is located in the class II region of the MHC (major histocompatibility complex). Expression of this gene is induced by gamma interferon and this gene product replaces catalytic subunit 1 (proteasome beta 6 subunit) in the immunoproteasome. Proteolytic processing is required to generate a mature subunit.

Synonyms:

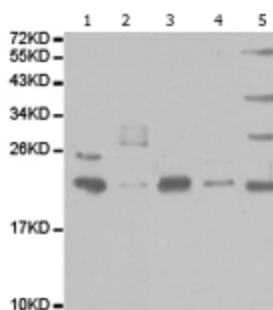
beta1i; LMP2; PSMB6i; RING12

Protein Families:

Druggable Genome, Protease

Protein Pathways:

Proteasome

Product images:

Predicted band size: 23 kDa. Positive control: Raji, HepG2, THP-1 and Du145 cell, mouse liver tissue lysate. Recommended dilution: 1/500-2000. (Gel: 10%SDS-PAGE Lane 1: Raji cell lysate Lane 2: HepG2 cell lysate Lane 3: THP-1 cell lysate Lane 4: Du145 cell lysate Lane 5: Mouse liver tissue lysate Lysates: 40 ug per lane Primary antibody: 1/500 dilution Secondary antibody: Goat anti Rabbit IgG - H&L (HRP) at 1/10000 dilution Exposure time: 1 minute)