

Product datasheet for **TA322950**

PVRL1 (NECTIN1) Rabbit Polyclonal Antibody

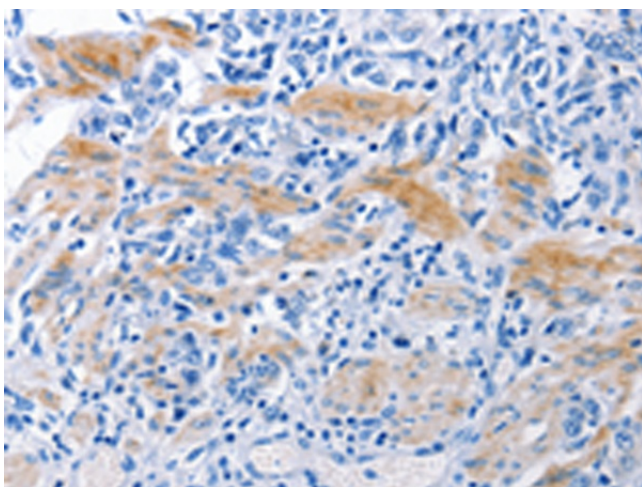
Product data:

Product Type:	Primary Antibodies
Applications:	IHC
Recommended Dilution:	IHC: 25-100 Positive control: Human stomach cancer Predicted cell location: Cytoplasm
Reactivity:	Human, Mouse
Host:	Rabbit
Isotype:	IgG
Clonality:	Polyclonal
Immunogen:	Synthetic peptide corresponding to a region derived from 472-486 amino acids of Human poliovirus receptor-related 1 (herpesvirus entry mediator C)
Formulation:	PBS pH7.3, 0.05% NaN ₃ , 50% glycerol
Concentration:	lot specific
Purification:	Antigen affinity purification
Conjugation:	Unconjugated
Storage:	Store at -20°C as received.
Stability:	Stable for 12 months from date of receipt.
Gene Name:	nectin cell adhesion molecule 1
Database Link:	NP_002846 Entrez Gene 58235 Mouse Entrez Gene 5818 Human Q15223

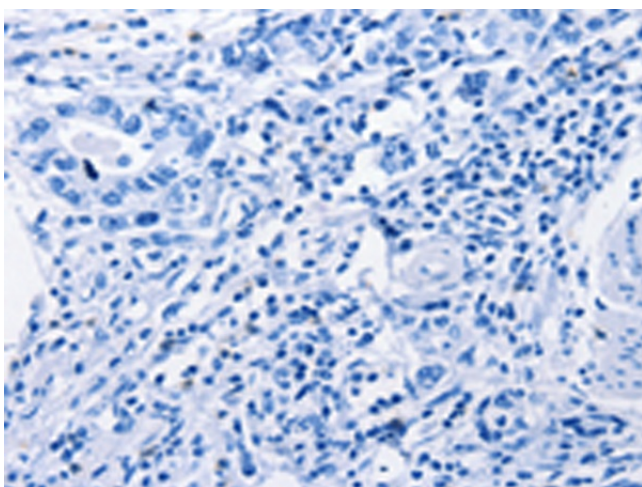


[View online »](#)

- Background:** This gene encodes an adhesion protein that plays a role in the organization of adherens junctions and tight junctions in epithelial and endothelial cells. The protein is a calcium(2+)-independent cell-cell adhesion molecule that belongs to the immunoglobulin superfamily and has 3 extracellular immunoglobulin-like loops; a single transmembrane domain (in some isoforms); and a cytoplasmic region. This protein acts as a receptor for glycoprotein D (gD) of herpes simplex viruses 1 and 2 (HSV-1; HSV-2); and pseudorabies virus (PRV) and mediates viral entry into epithelial and neuronal cells. Mutations in this gene cause cleft lip and palate/ectodermal dysplasia 1 syndrome (CLPED1) as well as non-syndromic cleft lip with or without cleft palate (CL/P). Alternative splicing results in multiple transcript variants encoding proteins with distinct C-termini.
- Synonyms:** CD111; CLPED1; ED4; HlgR; HV1S; HVEC; nectin-1; OFC7; PRR; PRR1; PVRL1; PVRR; PVRR1; SK-12
- Protein Families:** Druggable Genome, ES Cell Differentiation/IPS, Transmembrane
- Protein Pathways:** Adherens junction, Cell adhesion molecules (CAMs)
- Product images:**



Immunohistochemistry of paraffin-embedded Human stomach cancer tissue using TA322950 (NECTIN1 Antibody) at dilution 1/30 (Original magnification: $\times 200$)



Immunohistochemistry of paraffin-embedded Human stomach cancer tissue using TA322950 (NECTIN1 Antibody) at dilution 1/30, treated with synthetic peptide. (Original magnification: ×200)