

Product datasheet for **TA322949S**

Parvalbumin (PVALB) Rabbit Polyclonal Antibody

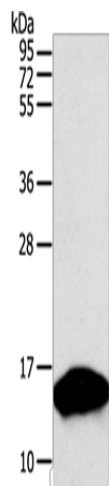
Product data:

| | |
|-------------------------|--|
| Product Type: | Primary Antibodies |
| Applications: | WB |
| Recommended Dilution: | WB: 500-2000 WB positive control: Human fetal brain tissue |
| Reactivity: | Human, Mouse, Rat |
| Host: | Rabbit |
| Isotype: | IgG |
| Clonality: | Polyclonal |
| Immunogen: | Fusion protein corresponding to a region derived from 2-110 amino acids of human parvalbumin |
| Formulation: | PBS pH7.3, 0.05% NaN ₃ , 50% glycerol |
| Purification: | Antigen affinity purification |
| Conjugation: | Unconjugated |
| Storage: | Store at -20°C as received. |
| Stability: | Stable for 12 months from date of receipt. |
| Predicted Protein Size: | 12 kDa |
| Gene Name: | parvalbumin |
| Database Link: | NP_002845 Entrez Gene 19293 Mouse Entrez Gene 25269 Rat Entrez Gene 5816 Human P20472 |
| Background: | Parvalbumin is a calcium-binding albumin protein with low molecular weight (typically 9-11 kDa). It has three EF hand motifs and is structurally related to calmodulin and troponin C. Parvalbumin is localised in fast-contracting muscles; where its levels are highest; and in the brain and some endocrine tissues. Parvalbumin is a small; stable protein containing EF-hand type calcium binding sites. It is involved in calcium signaling. Typically; this protein is broken into three domains; domains AB; CD and EF; each individually containing a helix-loop-helix motif. |
| Synonyms: | D22S749 |



[View online »](#)

Product images:



Gel: 12%SDS-PAGE
Lysate: 50 μ g
Lane: Human fetal brain tissue
Primary antibody: [TA322949] (PVALB Antibody)
at dilution 1/300
Secondary antibody: Goat anti rabbit IgG at
1/8000 dilution
Exposure time: 30 seconds