

## Product datasheet for TA322949

### Parvalbumin (PVALB) Rabbit Polyclonal Antibody

#### Product data:

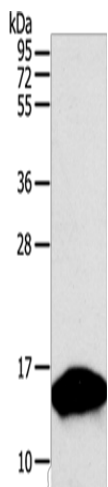
Product Type:	Primary Antibodies
Applications:	WB
Recommended Dilution:	WB: 500-2000 WB positive control: Human fetal brain tissue
Reactivity:	Human, Mouse, Rat
Host:	Rabbit
Isotype:	IgG
Clonality:	Polyclonal
Immunogen:	Fusion protein corresponding to a region derived from 2-110 amino acids of human parvalbumin
Formulation:	PBS pH7.3, 0.05% NaN <sub>3</sub> , 50% glycerol
Concentration:	lot specific
Purification:	Antigen affinity purification
Conjugation:	Unconjugated
Storage:	Store at -20°C as received.
Stability:	Stable for 12 months from date of receipt.
Predicted Protein Size:	12 kDa
Gene Name:	parvalbumin
Database Link:	<a href="#">NP_002845</a> <a href="#">Entrez Gene 19293 Mouse</a> <a href="#">Entrez Gene 25269 Rat</a> <a href="#">Entrez Gene 5816 Human</a> <a href="#">P20472</a>

**Background:** Parvalbumin is a calcium-binding protein with low molecular weight (typically 9-11 kDa). It has three EF hand motifs and is structurally related to calmodulin and troponin C. Parvalbumin is localised in fast-contracting muscles; where its levels are highest; and in the brain and some endocrine tissues. Parvalbumin is a small; stable protein containing EF-hand type calcium binding sites. It is involved in calcium signaling. Typically; this protein is broken into three domains; domains AB; CD and EF; each individually containing a helix-loop-helix motif.


[View online »](#)

Synonyms: D22S749

## Product images:



Gel: 12%SDS-PAGE  
 Lysate: 50 µg  
 Lane: Human fetal brain tissue  
 Primary antibody: TA322949 (PVALB Antibody) at dilution 1/300  
 Secondary antibody: Goat anti rabbit IgG at 1/8000 dilution  
 Exposure time: 30 seconds