

Product datasheet for **TA322947**

RPTP mu (PTPRM) Rabbit Polyclonal Antibody

Product data:

Product Type:	Primary Antibodies
Applications:	IHC
Recommended Dilution:	IHC: 100-300 Positive control: Human esophagus cancer Predicted cell location: Cytoplasm
Reactivity:	Human, Mouse
Host:	Rabbit
Isotype:	IgG
Clonality:	Polyclonal
Immunogen:	Synthetic peptide corresponding to a region derived from 1370-1385 amino acids of Human protein tyrosine phosphatase, receptor type, M
Formulation:	PBS pH7.3, 0.05% NaN ₃ , 50% glycerol
Concentration:	lot specific
Purification:	Antigen affinity purification
Conjugation:	Unconjugated
Storage:	Store at -20°C as received.
Stability:	Stable for 12 months from date of receipt.
Gene Name:	protein tyrosine phosphatase, receptor type M
Database Link:	NP_002836 Entrez Gene 19274 Mouse Entrez Gene 5797 Human P28827



[View online »](#)

Background:

The protein encoded by this gene is a member of the protein tyrosine phosphatase (PTP) family. PTPs are known to be signaling molecules that regulate a variety of cellular processes including cell growth; differentiation; mitotic cycle; and oncogenic transformation. This PTP possesses an extracellular region; a single transmembrane region; and two tandem catalytic domains; and thus represents a receptor-type PTP. The extracellular region contains a meprin-A5 antigen-PTP mu (MAM) domain; an Ig-like domain and four fibronectin type III-like repeats. This PTP has been shown to mediate cell-cell aggregation through the interaction with another molecule of this PTP on an adjacent cell. This PTP can interact with scaffolding protein RACK1/GNB2L1; which may be necessary for the downstream signaling in response to cell-cell adhesion. Alternative splicing results in multiple transcripts encoding distinct isoforms.

Synonyms:

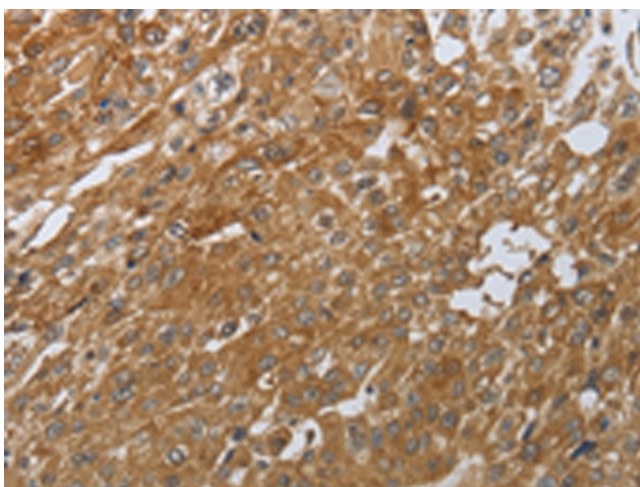
hR-PTPu; PTPRL1; R-PTP-MU; RPTPM; RPTPU

Protein Families:

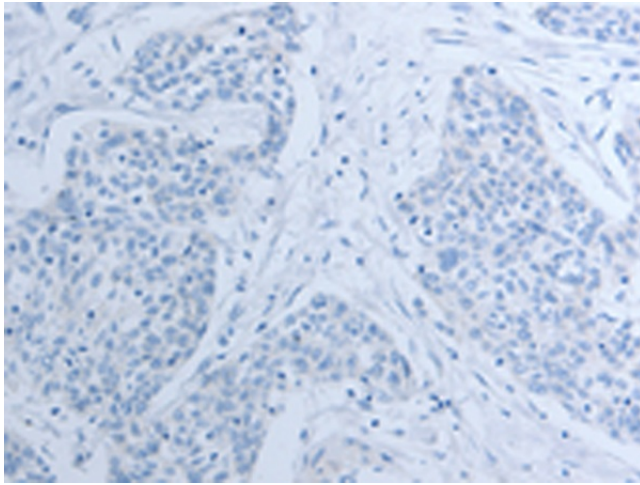
Druggable Genome, Phosphatase, Transmembrane

Protein Pathways:

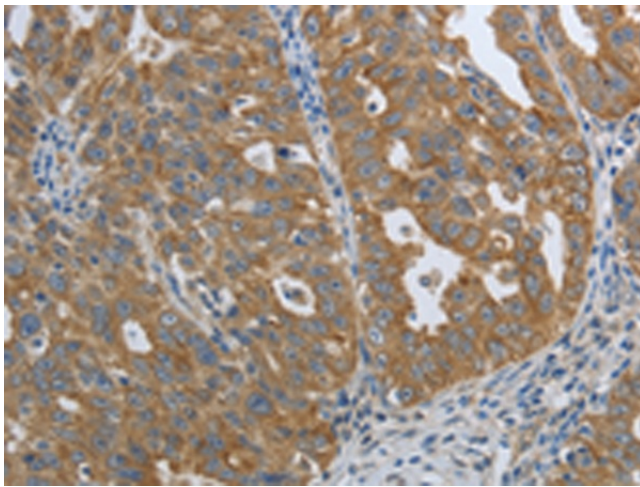
Adherens junction, Cell adhesion molecules (CAMs)

Product images:

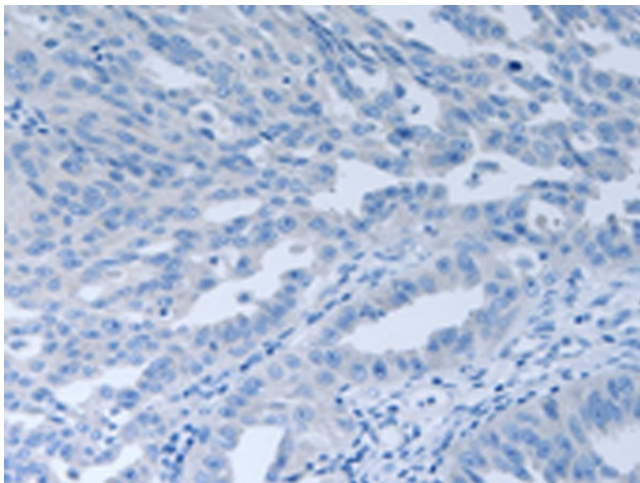
Immunohistochemistry of paraffin-embedded Human esophagus cancer tissue using TA322947 (PTPRM Antibody) at dilution 1/80 (Original magnification: $\times 200$)



Immunohistochemistry of paraffin-embedded Human esophagus cancer tissue using TA322947 (PTPRM Antibody) at dilution 1/80, treated with synthetic peptide. (Original magnification: ×200)



Immunohistochemistry of paraffin-embedded Human ovarian cancer tissue using TA322947 (PTPRM Antibody) at dilution 1/80 (Original magnification: ×200)



Immunohistochemistry of paraffin-embedded Human ovarian cancer tissue using TA322947 (PTPRM Antibody) at dilution 1/80, treated with synthetic peptide. (Original magnification: ×200)