

## Product datasheet for **TA322945S**

### DEP1 (PTPRJ) Rabbit Polyclonal Antibody

#### Product data:

|                       |  |
|-----------------------|--|
| Product Type:         | Primary Antibodies   |
| Applications:         | IHC  |
| Recommended Dilution: | IHC: 25-100<br>Positive control: Human liver cancer<br>Predicted cell location: Cytoplasm  |
| Reactivity:           | Human, Mouse   |
| Host:                 | Rabbit   |
| Isotype:              | IgG  |
| Clonality:            | Polyclonal   |
| Immunogen:            | Synthetic peptide corresponding to a region derived from 1323-1337 amino acids of Human protein tyrosine phosphatase, receptor type, J |
| Formulation:          | PBS pH7.3, 0.05% NaN <sub>3</sub> , 50% glycerol   |
| Purification:         | Antigen affinity purification  |
| Conjugation:          | Unconjugated   |
| Storage:              | Store at -20°C as received.  |
| Stability:            | Stable for 12 months from date of receipt.   |
| Gene Name:            | protein tyrosine phosphatase, receptor type J  |
| Database Link:        | <a href="#">NP_002834</a><br><a href="#">Entrez Gene 19271 Mouse</a> <a href="#">Entrez Gene 5795 Human</a><br><a href="#">Q12913</a>  |



[View online »](#)

**Background:**

The protein encoded by this gene is a member of the protein tyrosine phosphatase (PTP) family. PTPs are known to be signaling molecules that regulate a variety of cellular processes; including cell growth; differentiation; mitotic cycle; and oncogenic transformation. This PTP possesses an extracellular region containing five fibronectin type III repeats; a single transmembrane region; and a single intracytoplasmic catalytic domain; and thus represents a receptor-type PTP. This protein is present in all hematopoietic lineages; and was shown to negatively regulate T cell receptor signaling possibly through interfering with the phosphorylation of Phospholipase C Gamma 1 and Linker for Activation of T Cells. This protein can also dephosphorylate the PDGF beta receptor; and may be involved in UV-induced signal transduction. Multiple transcript variants encoding different isoforms have been found for this gene.

**Synonyms:**

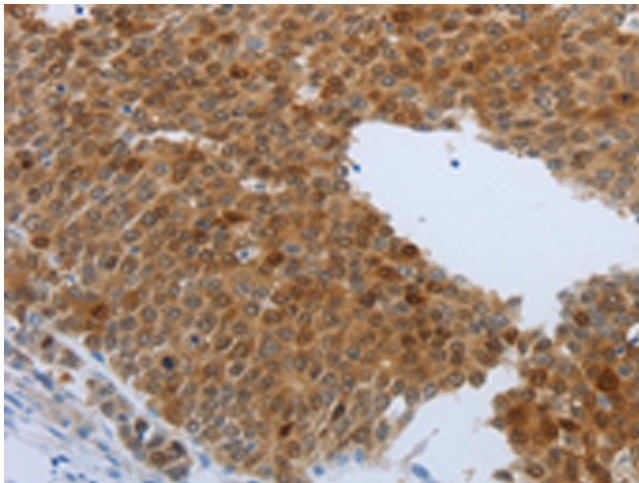
CD148; DEP1; HPTPeta; R-PTP-ETA; SCC1

**Protein Families:**

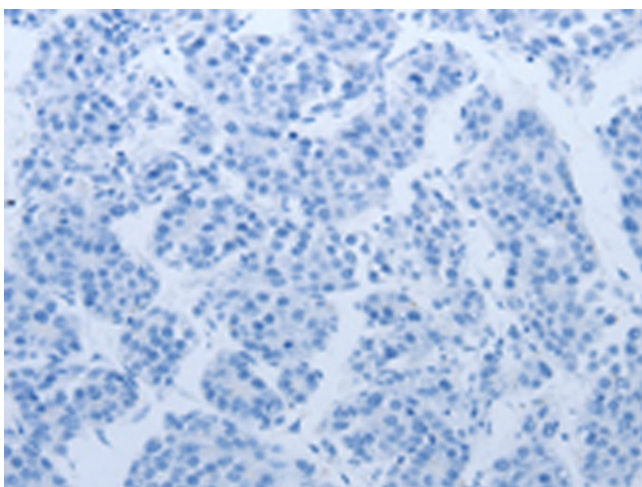
Druggable Genome, Phosphatase, Transmembrane

**Protein Pathways:**

Adherens junction

**Product images:**

Immunohistochemistry of paraffin-embedded Human liver cancer tissue using [TA322945] (PTPRJ Antibody) at dilution 1/40 (Original magnification: ×200)



Immunohistochemistry of paraffin-embedded Human liver cancer tissue using [TA322945] (PTPRJ Antibody) at dilution 1/40, treated with synthetic peptide. (Original magnification: ×200)