

Product datasheet for **TA322944**

DEP1 (PTPRJ) Rabbit Polyclonal Antibody

Product data:

Product Type:	Primary Antibodies
Applications:	IHC
Recommended Dilution:	IHC: 25-100 Positive control: Human breast cancer Predicted cell location: Cytoplasm
Reactivity:	Human, Mouse
Host:	Rabbit
Isotype:	IgG
Clonality:	Polyclonal
Immunogen:	Synthetic peptide corresponding to a region derived from 1323-1337 amino acids of Human protein tyrosine phosphatase, receptor type, J
Formulation:	PBS pH7.3, 0.05% NaN ₃ , 50% glycerol
Concentration:	lot specific
Purification:	Antigen affinity purification
Conjugation:	Unconjugated
Storage:	Store at -20°C as received.
Stability:	Stable for 12 months from date of receipt.
Gene Name:	protein tyrosine phosphatase, receptor type J
Database Link:	NP_002834 Entrez Gene 19271 Mouse Entrez Gene 5795 Human Q12913



[View online »](#)

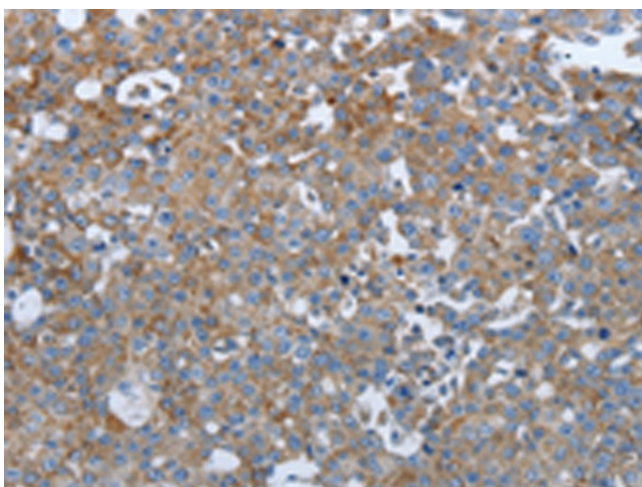
Background: The protein encoded by this gene is a member of the protein tyrosine phosphatase (PTP) family. PTPs are known to be signaling molecules that regulate a variety of cellular processes; including cell growth; differentiation; mitotic cycle; and oncogenic transformation. This PTP possesses an extracellular region containing five fibronectin type III repeats; a single transmembrane region; and a single intracytoplasmic catalytic domain; and thus represents a receptor-type PTP. This protein is present in all hematopoietic lineages; and was shown to negatively regulate T cell receptor signaling possibly through interfering with the phosphorylation of Phospholipase C Gamma 1 and Linker for Activation of T Cells. This protein can also dephosphorylate the PDGF beta receptor; and may be involved in UV-induced signal transduction. Multiple transcript variants encoding different isoforms have been found for this gene.

Synonyms: CD148; DEP1; HPTPeta; R-PTP-ETA; SCC1

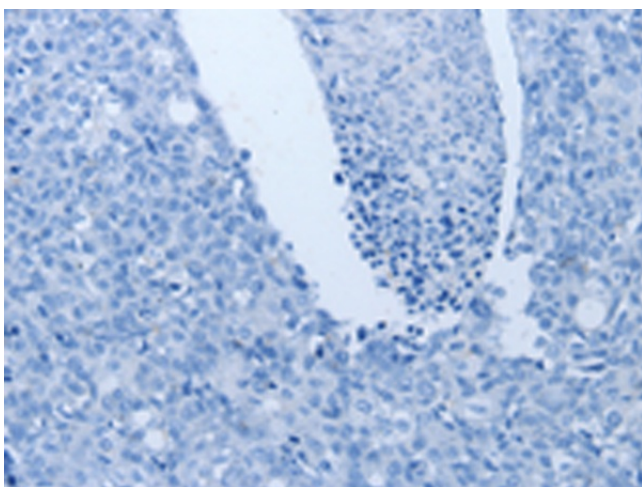
Protein Families: Druggable Genome, Phosphatase, Transmembrane

Protein Pathways: Adherens junction

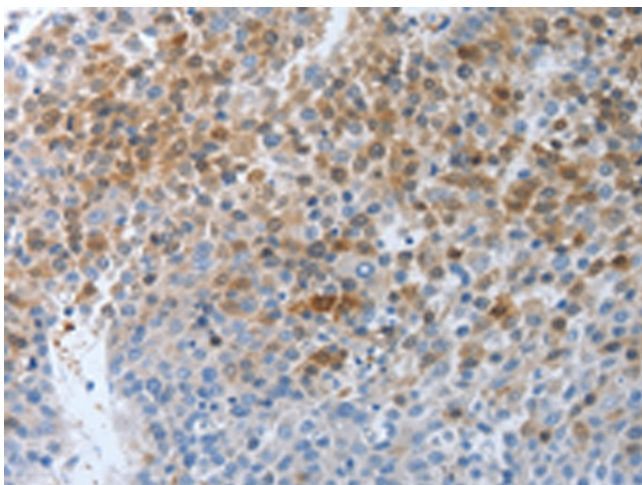
Product images:



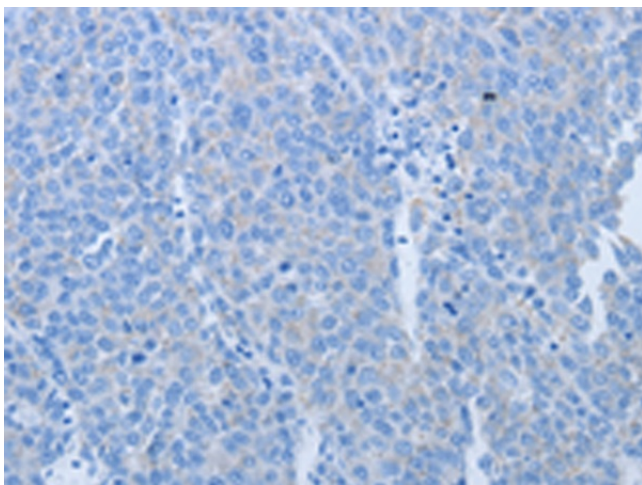
Immunohistochemistry of paraffin-embedded Human breast cancer tissue using TA322944 (PTPRJ Antibody) at dilution 1/40 (Original magnification: $\times 200$)



Immunohistochemistry of paraffin-embedded Human breast cancer tissue using TA322944 (PTPRJ Antibody) at dilution 1/40, treated with synthetic peptide. (Original magnification: ×200)



Immunohistochemistry of paraffin-embedded Human liver cancer tissue using TA322944 (PTPRJ Antibody) at dilution 1/40 (Original magnification: ×200)



Immunohistochemistry of paraffin-embedded Human liver cancer tissue using TA322944 (PTPRJ Antibody) at dilution 1/40, treated with synthetic peptide. (Original magnification: ×200)