

Product datasheet for **TA322943**

RAB6A Rabbit Polyclonal Antibody

Product data:

Product Type:	Primary Antibodies
Applications:	IHC, WB
Recommended Dilution:	WB: 500-2000 WB positive control: 293T cells and mouse brain tissue, A549, Hela, A172 and HT-29 cells IHC: 25-100 Positive control: Human skin Predicted cell location: Cytoplasm
Reactivity:	Human, Mouse, Rat
Host:	Rabbit
Isotype:	IgG
Clonality:	Polyclonal
Immunogen:	Synthetic peptide corresponding to a region derived from 125-139 amino acids of Human Ras-related protein Rab-6A
Formulation:	PBS pH7.3, 0.05% NaN ₃ , 50% glycerol
Concentration:	lot specific
Purification:	Antigen affinity purification
Conjugation:	Unconjugated
Storage:	Store at -20°C as received.
Stability:	Stable for 12 months from date of receipt.
Predicted Protein Size:	24 kDa
Gene Name:	RAB6A, member RAS oncogene family
Database Link:	NP_002860 Entrez Gene 19346 Mouse Entrez Gene 84379 Rat Entrez Gene 5870 Human P20340



[View online »](#)

Background:

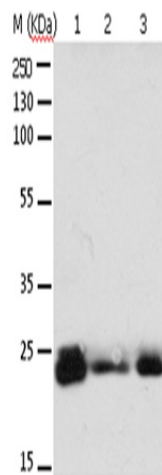
This gene encodes a member of the RAB family; which belongs to the small GTPase superfamily. GTPases of the RAB family bind to various effectors to regulate the targeting and fusion of transport carriers to acceptor compartments. This protein is located at the Golgi apparatus; which regulates trafficking in both a retrograde (from early endosomes and Golgi to the endoplasmic reticulum) and an anterograde (from the Golgi to the plasma membrane) directions. Myosin II is an effector of this protein in these processes. This protein is also involved in assembly of human cytomegalovirus (HCMV) by interacting with the cellular protein Bicaudal D1; which interacts with the HCMV virion tegument protein; pp150. Multiple alternatively spliced transcript variants encoding different isoforms have been identified.

Synonyms:

RAB6

Protein Families:

Druggable Genome

Product images:

Gel: 10%SDS-PAGE

Lysate: 30 μ g

Lane 1-6: 293T cells

mouse brain tissue

A549 cells

Hela cells

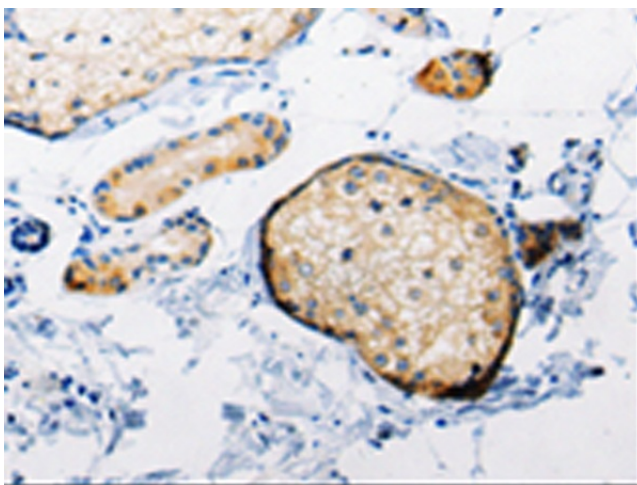
A172 cells

HT29 cells

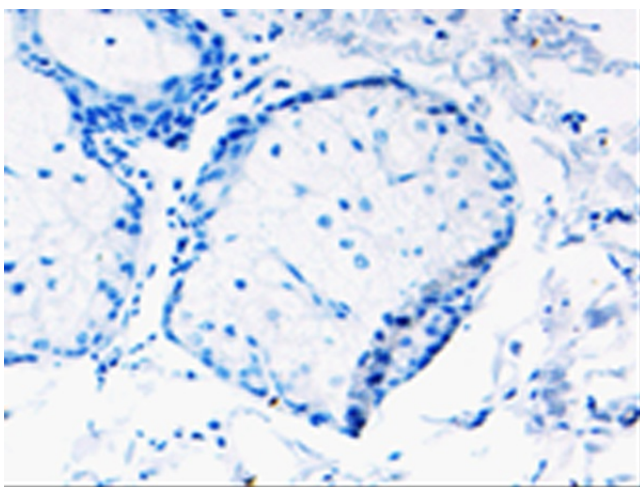
Primary antibody: TA322943 (RAB6A Antibody) at dilution 1/650

Secondary antibody: Goat anti rabbit IgG at 1/8000 dilution

Exposure time: 1 minute



Immunohistochemistry of paraffin-embedded Human skin tissue using TA322943 (RAB6A Antibody) at dilution 1/25 (Original magnification: \times 200)



Immunohistochemistry of paraffin-embedded Human skin tissue using TA322943 (RAB6A Antibody) at dilution 1/25, treated with synthetic peptide. (Original magnification: $\times 200$)