

Product datasheet for **TA322942S**

GPBB (PYGB) Rabbit Polyclonal Antibody

Product data:

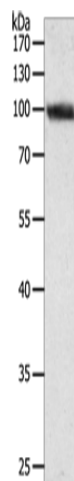
Product Type:	Primary Antibodies
Applications:	WB
Recommended Dilution:	WB: 200-1000 WB positive control: SKOV3 cells
Reactivity:	Human, Mouse, Rat
Host:	Rabbit
Isotype:	IgG
Clonality:	Polyclonal
Immunogen:	Synthetic peptide corresponding to a region derived from 1-15 amino acids of Human phosphorylase, glycogen; brain
Formulation:	PBS pH7.3, 0.05% NaN ₃ , 50% glycerol
Purification:	Antigen affinity purification
Conjugation:	Unconjugated
Storage:	Store at -20°C as received.
Stability:	Stable for 12 months from date of receipt.
Predicted Protein Size:	97 kDa
Gene Name:	phosphorylase, glycogen; brain
Database Link:	NP_002853 Entrez Gene 25739 Rat Entrez Gene 110078 Mouse Entrez Gene 5834 Human P11216
Background:	The protein encoded by this gene is a glycogen phosphorylase found predominantly in the brain. The encoded protein forms homodimers which can associate into homotetramers; the enzymatically active form of glycogen phosphorylase. The activity of this enzyme is positively regulated by AMP and negatively regulated by ATP; ADP; and glucose-6-phosphate. This enzyme catalyzes the rate-determining step in glycogen degradation
Synonyms:	GPBB
Protein Families:	Druggable Genome



[View online »](#)

Protein Pathways: Insulin signaling pathway, Starch and sucrose metabolism

Product images:



Gel: 8%SDS-PAGE
Lysate: 40 μ g
Lane: SKOV3 cells
Primary antibody: [TA322942] (PYGB Antibody) at dilution 1/300
Secondary antibody: Goat anti rabbit IgG at 1/8000 dilution
Exposure time: 30 seconds