

## Product datasheet for **TA322942**

### GPBB (PYGB) Rabbit Polyclonal Antibody

#### Product data:

Product Type:	Primary Antibodies
Applications:	WB
Recommended Dilution:	WB: 200-1000 WB positive control: SKOV3 cells
Reactivity:	Human, Mouse, Rat
Host:	Rabbit
Isotype:	IgG
Clonality:	Polyclonal
Immunogen:	Synthetic peptide corresponding to a region derived from 1-15 amino acids of Human phosphorylase, glycogen; brain
Formulation:	PBS pH7.3, 0.05% NaN <sub>3</sub> , 50% glycerol
Concentration:	lot specific
Purification:	Antigen affinity purification
Conjugation:	Unconjugated
Storage:	Store at -20°C as received.
Stability:	Stable for 12 months from date of receipt.
Predicted Protein Size:	97 kDa
Gene Name:	phosphorylase, glycogen; brain
Database Link:	<a href="#">NP_002853</a> <a href="#">Entrez Gene 25739 Rat</a> <a href="#">Entrez Gene 110078 Mouse</a> <a href="#">Entrez Gene 5834 Human</a> <a href="#">P11216</a>
Background:	The protein encoded by this gene is a glycogen phosphorylase found predominantly in the brain. The encoded protein forms homodimers which can associate into homotetramers; the enzymatically active form of glycogen phosphorylase. The activity of this enzyme is positively regulated by AMP and negatively regulated by ATP; ADP; and glucose-6-phosphate. This enzyme catalyzes the rate-determining step in glycogen degradation
Synonyms:	GPBB

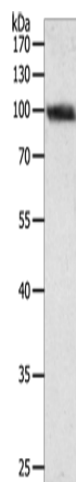


[View online »](#)

Protein Families: Druggable Genome

Protein Pathways: Insulin signaling pathway, Starch and sucrose metabolism

### Product images:



Gel: 8%SDS-PAGE

Lysate: 40 µg

Lane: SKOV3 cells

Primary antibody: TA322942 (PYGB Antibody) at dilution 1/300

Secondary antibody: Goat anti rabbit IgG at 1/8000 dilution

Exposure time: 30 seconds