

Product datasheet for **TA322939S**

RALB Rabbit Polyclonal Antibody

Product data:

Product Type:	Primary Antibodies
Applications:	IHC, WB
Recommended Dilution:	WB: 500-2000 WB positive control: Mouse lung tissue IHC: 10-50 Positive control: Human brain Predicted cell location: Cytoplasm
Reactivity:	Human, Mouse, Rat
Host:	Rabbit
Isotype:	IgG
Clonality:	Polyclonal
Immunogen:	Synthetic peptide corresponding to a region derived from 142-156 amino acids of Human Ras-related protein Ral-B
Formulation:	PBS pH7.3, 0.05% NaN ₃ , 50% glycerol
Purification:	Antigen affinity purification
Conjugation:	Unconjugated
Storage:	Store at -20°C as received.
Stability:	Stable for 12 months from date of receipt.
Predicted Protein Size:	24 kDa
Gene Name:	RALB Ras like proto-oncogene B
Database Link:	NP_002872 Entrez Gene 64143 MouseEntrez Gene 116546 RatEntrez Gene 5899 Human P11234
Background:	This gene encodes a GTP-binding protein that belongs to the small GTPase superfamily and Ras family of proteins. GTP-binding proteins mediate the transmembrane signaling initiated by the occupancy of certain cell surface receptors.
Synonyms:	GTP binding protein; GTP binding protein); RAS-like protein B; v-ral simian leukemia viral oncogene homolog B; v-ral simian leukemia viral oncogene homolog B (ras related

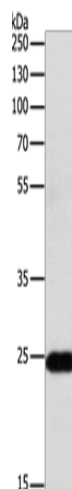


[View online »](#)

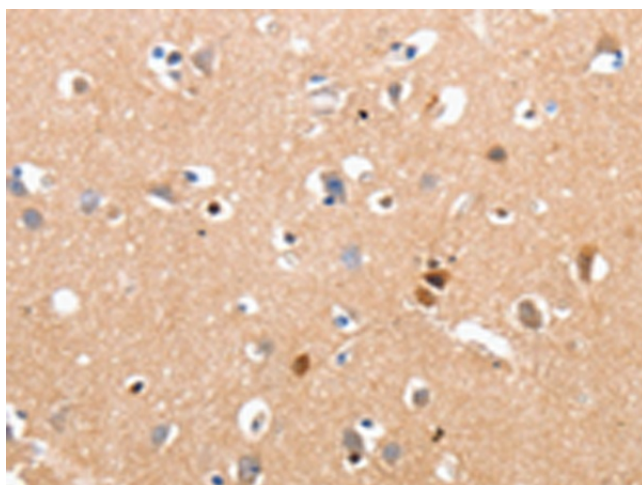
Protein Families: Druggable Genome

Protein Pathways: Pancreatic cancer, Pathways in cancer

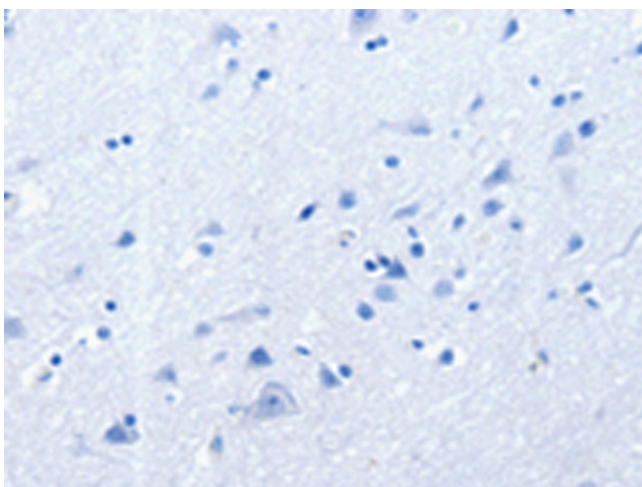
Product images:



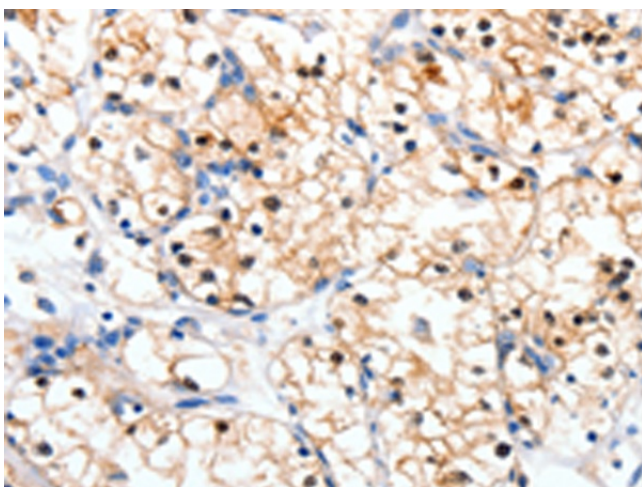
Gel: 10%SDS-PAGE
Lysate: 30 μ g
Lane: Mouse lung tissue
Primary antibody: [TA322939] (RALB Antibody) at dilution 1/300
Secondary antibody: Goat anti rabbit IgG at 1/8000 dilution
Exposure time: 30 seconds



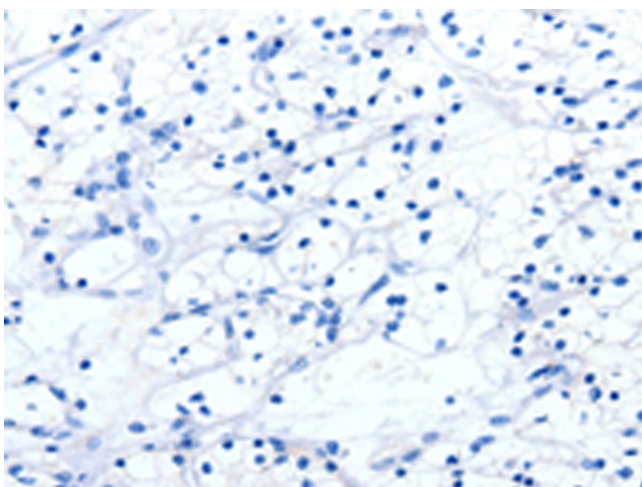
Immunohistochemistry of paraffin-embedded Human brain tissue using [TA322939] (RALB Antibody) at dilution 1/10 (Original magnification: \times 200)



Immunohistochemistry of paraffin-embedded Human brain tissue using [TA322939] (RALB Antibody) at dilution 1/10, treated with synthetic peptide. (Original magnification: x200)



Immunohistochemistry of paraffin-embedded Human renal cancer tissue using [TA322939] (RALB Antibody) at dilution 1/10 (Original magnification: x200)



Immunohistochemistry of paraffin-embedded Human renal cancer tissue using [TA322939] (RALB Antibody) at dilution 1/10, treated with synthetic peptide. (Original magnification: x200)