

## Product datasheet for **TA322939**

### **RALB Rabbit Polyclonal Antibody**

#### **Product data:**

<b>Product Type:</b>	Primary Antibodies
<b>Applications:</b>	IHC, WB
<b>Recommended Dilution:</b>	WB: 500-2000 WB positive control: Mouse lung tissue IHC: 10-50 Positive control: Human brain Predicted cell location: Cytoplasm
<b>Reactivity:</b>	Human, Mouse, Rat
<b>Host:</b>	Rabbit
<b>Isotype:</b>	IgG
<b>Clonality:</b>	Polyclonal
<b>Immunogen:</b>	Synthetic peptide corresponding to a region derived from 142-156 amino acids of Human Ras-related protein Ral-B
<b>Formulation:</b>	PBS pH7.3, 0.05% NaN <sub>3</sub> , 50% glycerol
<b>Concentration:</b>	lot specific
<b>Purification:</b>	Antigen affinity purification
<b>Conjugation:</b>	Unconjugated
<b>Storage:</b>	Store at -20°C as received.
<b>Stability:</b>	Stable for 12 months from date of receipt.
<b>Predicted Protein Size:</b>	24 kDa
<b>Gene Name:</b>	RALB Ras like proto-oncogene B
<b>Database Link:</b>	<a href="#">NP_002872</a> <a href="#">Entrez Gene 64143 Mouse</a> <a href="#">Entrez Gene 116546 Rat</a> <a href="#">Entrez Gene 5899 Human</a> <a href="#">P11234</a>
<b>Background:</b>	This gene encodes a GTP-binding protein that belongs to the small GTPase superfamily and Ras family of proteins. GTP-binding proteins mediate the transmembrane signaling initiated by the occupancy of certain cell surface receptors.



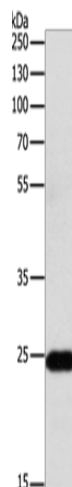
[View online »](#)

**Synonyms:** GTP binding protein; GTP binding protein); RAS-like protein B; v-ral simian leukemia viral oncogene homolog B; v-ral simian leukemia viral oncogene homolog B (ras related)

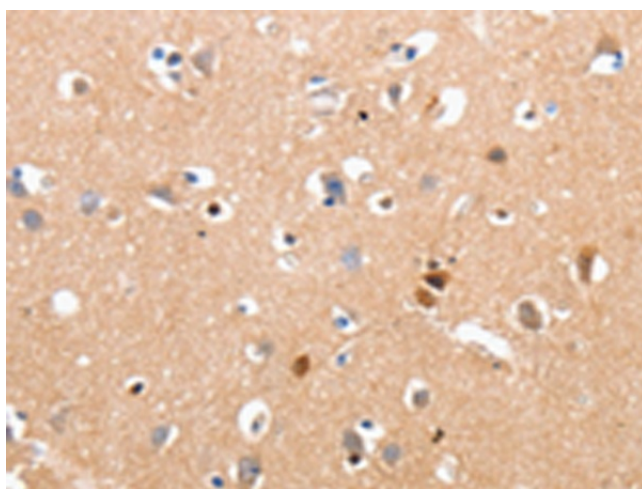
**Protein Families:** Druggable Genome

**Protein Pathways:** Pancreatic cancer, Pathways in cancer

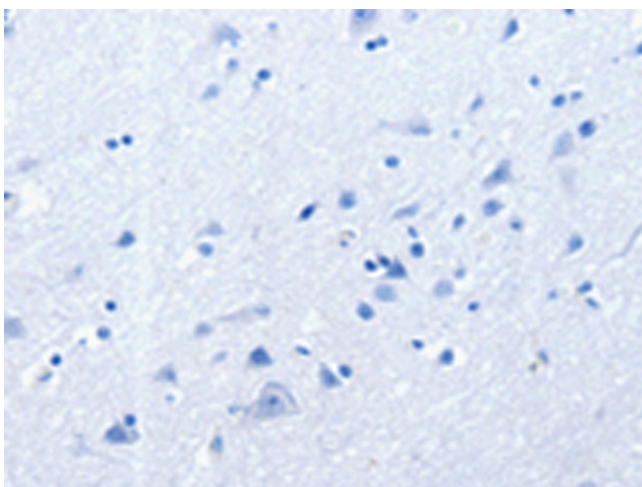
### Product images:



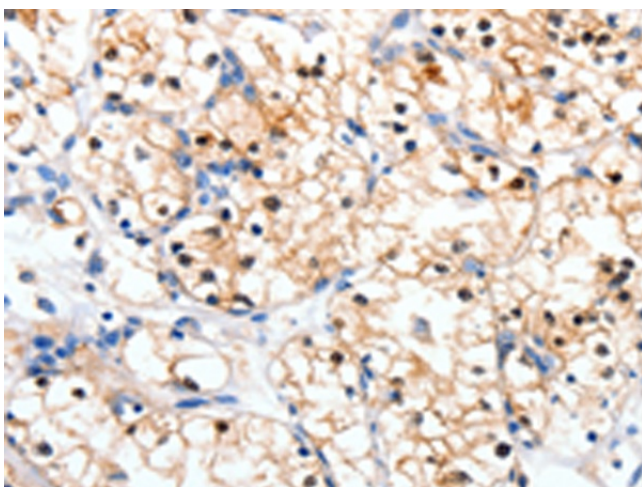
Gel: 10%SDS-PAGE  
Lysate: 30  $\mu$ g  
Lane: Mouse lung tissue  
Primary antibody: TA322939 (RALB Antibody) at dilution 1/300  
Secondary antibody: Goat anti rabbit IgG at 1/8000 dilution  
Exposure time: 30 seconds



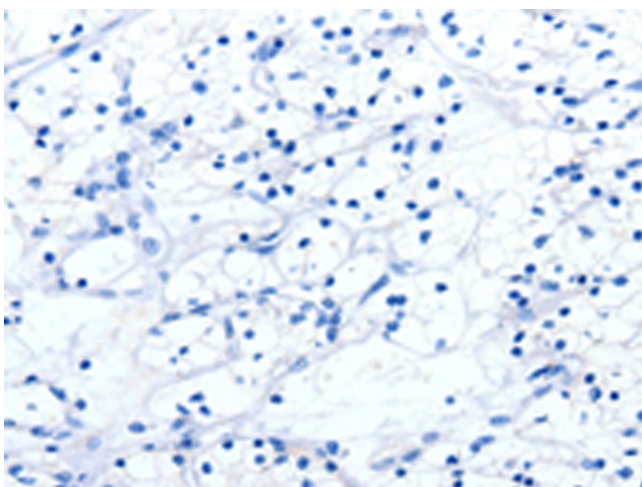
Immunohistochemistry of paraffin-embedded Human brain tissue using TA322939 (RALB Antibody) at dilution 1/10 (Original magnification:  $\times$ 200)



Immunohistochemistry of paraffin-embedded Human brain tissue using TA322939 (RALB Antibody) at dilution 1/10, treated with synthetic peptide. (Original magnification: ×200)



Immunohistochemistry of paraffin-embedded Human renal cancer tissue using TA322939 (RALB Antibody) at dilution 1/10 (Original magnification: ×200)



Immunohistochemistry of paraffin-embedded Human renal cancer tissue using TA322939 (RALB Antibody) at dilution 1/10, treated with synthetic peptide. (Original magnification: ×200)