

Product datasheet for **TA322938**

RALB Rabbit Polyclonal Antibody

Product data:

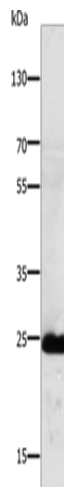
Product Type:	Primary Antibodies
Applications:	WB
Recommended Dilution:	WB: 500-2000 WB positive control: Mouse lung tissue
Reactivity:	Human, Mouse, Rat
Host:	Rabbit
Isotype:	IgG
Clonality:	Polyclonal
Immunogen:	Synthetic peptide corresponding to a region derived from 142-156 amino acids of Human Ras-related protein Ral-B
Formulation:	PBS pH7.3, 0.05% NaN ₃ , 50% glycerol
Concentration:	lot specific
Purification:	Antigen affinity purification
Conjugation:	Unconjugated
Storage:	Store at -20°C as received.
Stability:	Stable for 12 months from date of receipt.
Predicted Protein Size:	24 kDa
Gene Name:	RALB Ras like proto-oncogene B
Database Link:	NP_002872 Entrez Gene 64143 Mouse Entrez Gene 116546 Rat Entrez Gene 5899 Human P11234
Background:	This gene encodes a GTP-binding protein that belongs to the small GTPase superfamily and Ras family of proteins. GTP-binding proteins mediate the transmembrane signaling initiated by the occupancy of certain cell surface receptors.
Synonyms:	GTP binding protein; GTP binding protein); RAS-like protein B; v-ral simian leukemia viral oncogene homolog B; v-ral simian leukemia viral oncogene homolog B (ras related
Protein Families:	Druggable Genome



[View online »](#)

Protein Pathways: Pancreatic cancer, Pathways in cancer

Product images:



Gel: 10%SDS-PAGE
Lysate: 30 μ g
Lane: Mouse lung tissue
Primary antibody: TA322938 (RALB Antibody) at dilution 1/250
Secondary antibody: Goat anti rabbit IgG at 1/8000 dilution
Exposure time: 30 seconds