

## Product datasheet for **TA322937**

### RAF1 Rabbit Polyclonal Antibody

#### Product data:

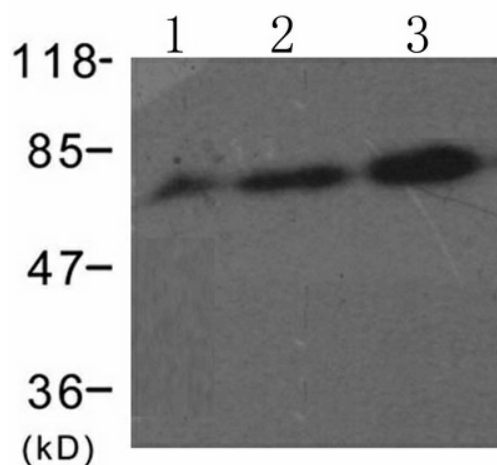
Product Type:	Primary Antibodies
Applications:	WB
Recommended Dilution:	WB: 1:500-1000
Reactivity:	Human, Mouse
Modifications:	Phospho-specific
Host:	Rabbit
Isotype:	IgG
Clonality:	Polyclonal
Immunogen:	Peptide sequence around phosphorylation site of serine 338 (R-D-S(p)-S-Y) derived from Human RAF.
Formulation:	PBS pH7.3, 0.05% NaN <sub>3</sub> , 50% glycerol
Concentration:	lot specific
Purification:	Antigen affinity purification
Conjugation:	Unconjugated
Storage:	Store at -20°C as received.
Stability:	Stable for 12 months from date of receipt.
Predicted Protein Size:	73 kDa
Gene Name:	Raf-1 proto-oncogene, serine/threonine kinase
Database Link:	<a href="#">NP_002871</a> <a href="#">Entrez Gene 110157 Mouse</a> <a href="#">Entrez Gene 5894 Human</a> <a href="#">P04049</a>
Background:	Involved in the transduction of mitogenic signals from the cell membrane to the nucleus. Part of the Ras-dependent signaling pathway from receptors to the nucleus. Protects cells from apoptosis mediated by STK3.
Synonyms:	c-Raf; CMD1NN; CRAF; NS5; Raf-1
Protein Families:	Druggable Genome, Protein Kinase



[View online »](#)

**Protein Pathways:**

Acute myeloid leukemia, B cell receptor signaling pathway, Bladder cancer, Chemokine signaling pathway, Chronic myeloid leukemia, Colorectal cancer, Endometrial cancer, ErbB signaling pathway, Fc epsilon RI signaling pathway, Fc gamma R-mediated phagocytosis, Focal adhesion, Gap junction, Glioma, GnRH signaling pathway, Insulin signaling pathway, Long-term depression, Long-term potentiation, MAPK signaling pathway, Melanogenesis, Melanoma, Natural killer cell mediated cytotoxicity, Neurotrophin signaling pathway, Non-small cell lung cancer, Pancreatic cancer, Pathways in cancer, Progesterone-mediated oocyte maturation, Prostate cancer, Regulation of actin cytoskeleton, Renal cell carcinoma, T cell receptor signaling pathway, Vascular smooth muscle contraction, VEGF signaling pathway

**Product images:**

Predicted band size: 73 kDa. Positive control: MDA cells untreated or treated with PMA for the indicated times lysate. Recommended dilution: 1/500-1000. (Gel: 8%SDS-PAGE Lane 1: MDA cells untreated with PMA lysate Lane 2, 3: MDA cells treated with PMA for 15 and 30 minutes lysate Lysates: 30 ug per lane Primary antibody: 1/500 dilution Secondary antibody: Goat anti Rabbit IgG - H&L (HRP) at 1/10000 dilution Exposure time: 1 minute)