

Product datasheet for **TA322936**

RBMS1 Rabbit Polyclonal Antibody

Product data:

Product Type:	Primary Antibodies
Applications:	IHC
Recommended Dilution:	IHC: 25-100 Positive control: Human colon cancer Predicted cell location: Nucleus
Reactivity:	Human, Mouse, Rat
Host:	Rabbit
Isotype:	IgG
Clonality:	Polyclonal
Immunogen:	Synthetic peptide corresponding to a region derived from 392-404 amino acids of Human RNA binding motif, single stranded interacting protein 1
Formulation:	PBS pH7.3, 0.05% NaN ₃ , 50% glycerol
Concentration:	lot specific
Purification:	Antigen affinity purification
Conjugation:	Unconjugated
Storage:	Store at -20°C as received.
Stability:	Stable for 12 months from date of receipt.
Gene Name:	RNA binding motif single stranded interacting protein 1
Database Link:	NP_002888 Entrez Gene 56878 MouseEntrez Gene 362138 RatEntrez Gene 5937 Human P29558



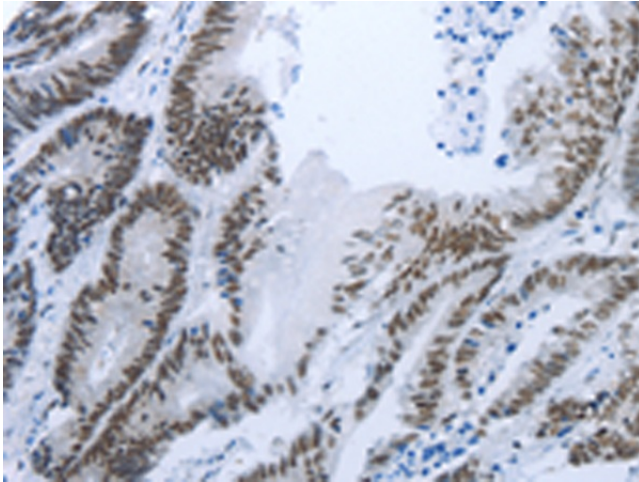
[View online »](#)

Background:

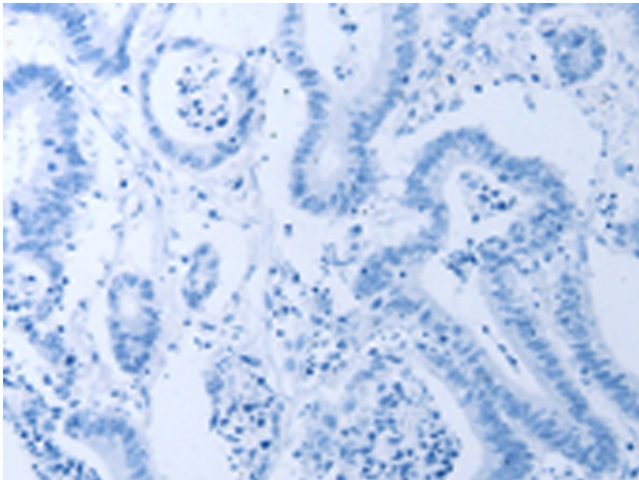
his gene encodes a member of a small family of proteins which bind single stranded DNA/RNA. These proteins are characterized by the presence of two sets of ribonucleoprotein consensus sequence (RNP-CS) that contain conserved motifs; RNP1 and RNP2; originally described in RNA binding proteins; and required for DNA binding. These proteins have been implicated in such diverse functions as DNA replication; gene transcription; cell cycle progression and apoptosis. Several transcript variants; resulting from alternative splicing and encoding different isoforms; have been described. A pseudogene for this locus is found on chromosome 12.

Synonyms:

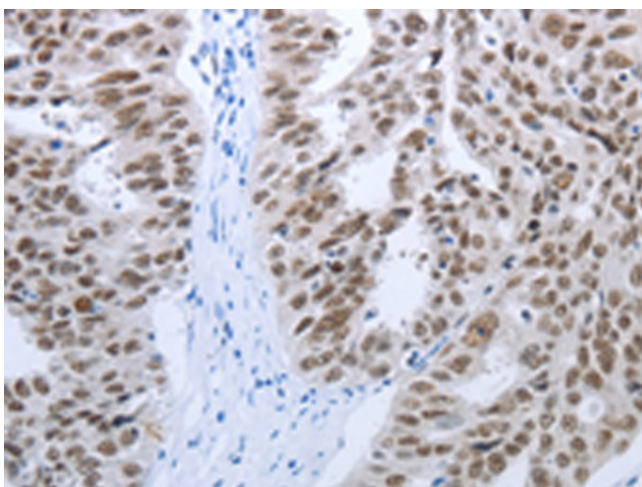
C2orf12; HCC-4; MSSP; MSSP-1; MSSP-2; MSSP-3; SCR2; YC1

Product images:

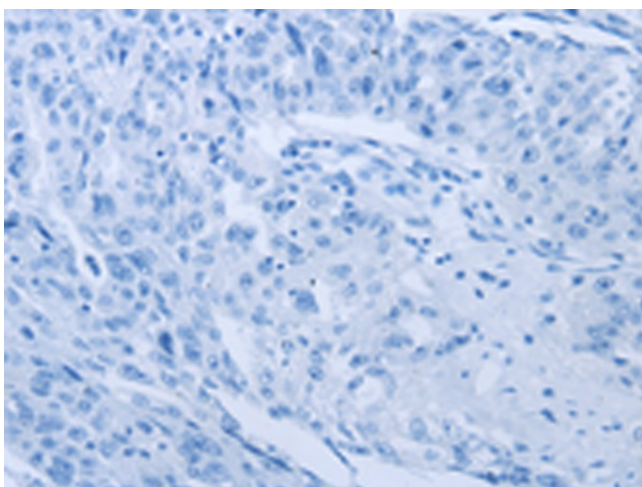
Immunohistochemistry of paraffin-embedded Human colon cancer tissue using TA322936 (RBMS1 Antibody) at dilution 1/30 (Original magnification: $\times 200$)



Immunohistochemistry of paraffin-embedded Human colon cancer tissue using TA322936 (RBMS1 Antibody) at dilution 1/30, treated with synthetic peptide. (Original magnification: $\times 200$)



Immunohistochemistry of paraffin-embedded Human ovarian cancer tissue using TA322936 (RBMS1 Antibody) at dilution 1/30 (Original magnification: ×200)



Immunohistochemistry of paraffin-embedded Human ovarian cancer tissue using TA322936 (RBMS1 Antibody) at dilution 1/30, treated with synthetic peptide. (Original magnification: ×200)