

Product datasheet for **TA322935**

RBMS1 Rabbit Polyclonal Antibody

Product data:

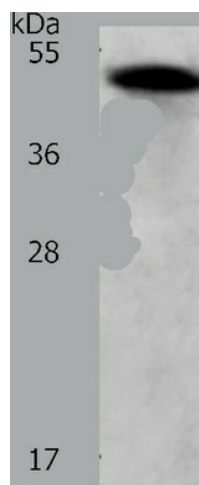
Product Type:	Primary Antibodies
Applications:	WB
Recommended Dilution:	ELISA: 1:1000-2000, WB: 1:200-1000
Reactivity:	Human, Mouse, Rat
Host:	Rabbit
Isotype:	IgG
Clonality:	Polyclonal
Immunogen:	Synthetic peptide corresponding to a region derived from 392-404 amino acids of Human RNA binding motif, single stranded interacting protein 1
Formulation:	PBS pH7.3, 0.05% NaN ₃ , 50% glycerol
Concentration:	lot specific
Purification:	Antigen affinity purification
Conjugation:	Unconjugated
Storage:	Store at -20°C as received.
Stability:	Stable for 12 months from date of receipt.
Predicted Protein Size:	45 kDa
Gene Name:	RNA binding motif single stranded interacting protein 1
Database Link:	NP_002888 Entrez Gene 56878 MouseEntrez Gene 362138 RatEntrez Gene 5937 Human P29558
Background:	This gene encodes a member of a small family of proteins which bind single stranded DNA/RNA. These proteins are characterized by the presence of two sets of ribonucleoprotein consensus sequence (RNP-CS) that contain conserved motifs; RNP1 and RNP2; originally described in RNA binding proteins; and required for DNA binding. These proteins have been implicated in such diverse functions as DNA replication; gene transcription; cell cycle progression and apoptosis. Several transcript variants; resulting from alternative splicing and encoding different isoforms; have been described. A pseudogene for this locus is found on chromosome 12.



[View online »](#)

Synonyms: C2orf12; HCC-4; MSSP; MSSP-1; MSSP-2; MSSP-3; SCR2; YC1

Product images:



Predicted band size: 45 kDa. Positive control: Human liver cancer tissue lysate. Recommended dilution: 1/200-1000. (Gel: 12%SDS-PAGE Lysate: 30 ug per lane Primary antibody: 1/300 dilution Secondary antibody: Goat anti Rabbit IgG - H&L (HRP) at 1/10000 dilution Exposure time: 20 seconds)