

Product datasheet for **TA322933**

RARRES1 Rabbit Polyclonal Antibody

Product data:

Product Type:	Primary Antibodies
Applications:	IHC, WB
Recommended Dilution:	WB: 500-2000 WB positive control: Human liver cancer tissue IHC: 100-300 Positive control: Human colon cancer Predicted cell location: Cytoplasm
Reactivity:	Human
Host:	Rabbit
Isotype:	IgG
Clonality:	Polyclonal
Immunogen:	Synthetic peptide corresponding to a region derived from 147-170 amino acids of human retinoic acid receptor responder (tazarotene induced) 1
Formulation:	PBS pH7.3, 0.05% NaN ₃ , 50% glycerol
Concentration:	lot specific
Purification:	Antigen affinity purification
Conjugation:	Unconjugated
Storage:	Store at -20°C as received.
Stability:	Stable for 12 months from date of receipt.
Predicted Protein Size:	26 kDa
Gene Name:	retinoic acid receptor responder 1
Database Link:	NP_002879 Entrez Gene 5918 Human P49788



[View online »](#)

Background:

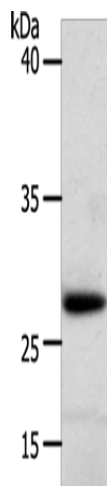
This gene was identified as a retinoid acid (RA) receptor-responsive gene. It encodes a type 1 membrane protein. The expression of this gene is upregulated by tazarotene as well as by retinoic acid receptors. The expression of this gene is found to be downregulated in prostate cancer; which is caused by the methylation of its promoter and CpG island. Alternatively spliced transcript variant encoding distinct isoforms have been observed.?

Synonyms:

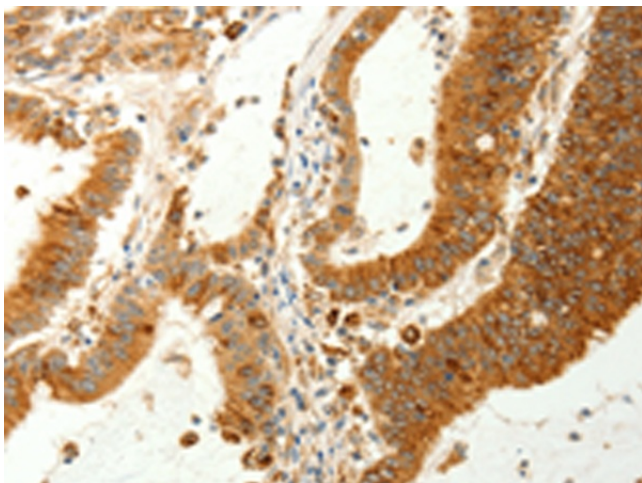
LXNL; PERG-1; TIG1

Protein Families:

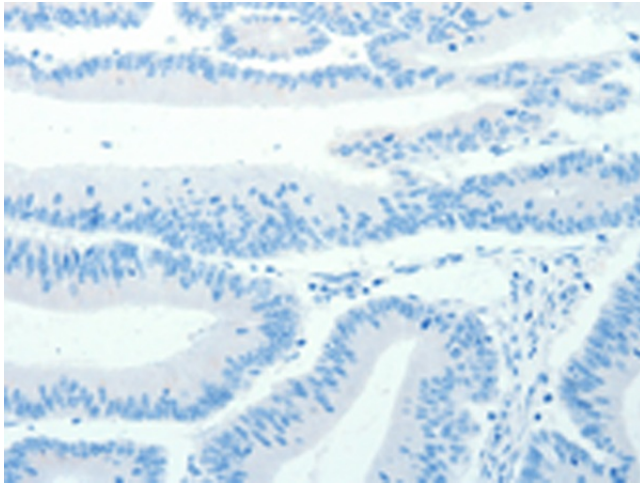
Druggable Genome

Product images:

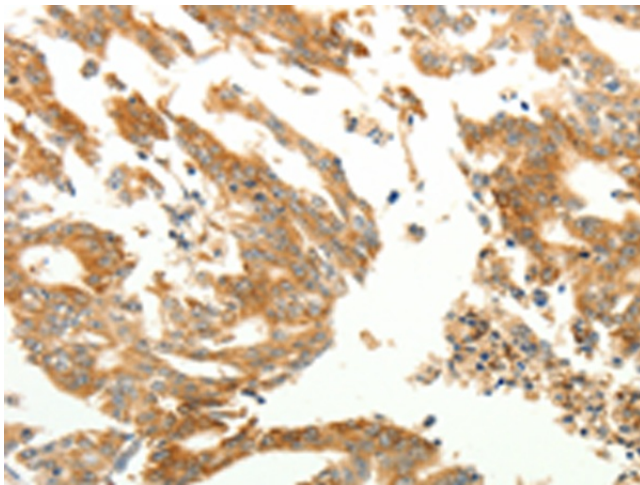
Gel: 10+15%SDS-PAGE
Lysate: 50 µg
Lane: Human liver cancer tissue
Primary antibody: TA322933 (RARRES1 Antibody) at dilution 1/300
Secondary antibody: Goat anti rabbit IgG at 1/8000 dilution
Exposure time: 40 seconds



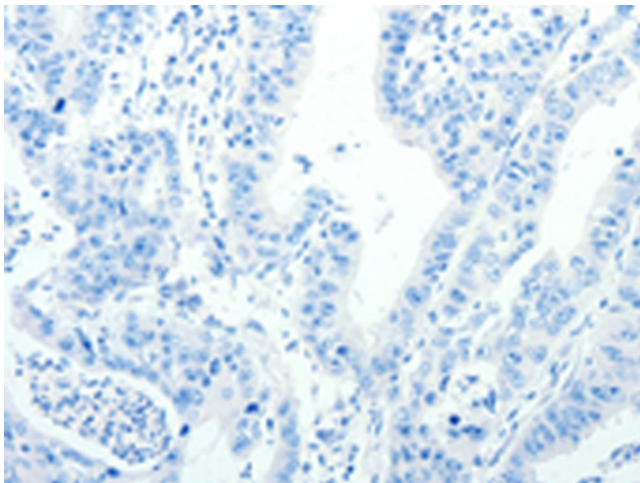
Immunohistochemistry of paraffin-embedded Human colon cancer tissue using TA322933 (RARRES1 Antibody) at dilution 1/60 (Original magnification: ×200)



Immunohistochemistry of paraffin-embedded Human colon cancer tissue using TA322933 (RARRES1 Antibody) at dilution 1/60, treated with synthetic peptide. (Original magnification: $\times 200$)



Immunohistochemistry of paraffin-embedded Human gastric cancer tissue using TA322933 (RARRES1 Antibody) at dilution 1/60 (Original magnification: $\times 200$)



Immunohistochemistry of paraffin-embedded Human gastric cancer tissue using TA322933 (RARRES1 Antibody) at dilution 1/60, treated with synthetic peptide. (Original magnification: $\times 200$)