

## Product datasheet for **TA322930**

### **S100A4 Rabbit Polyclonal Antibody**

#### **Product data:**

Product Type:	Primary Antibodies
Applications:	IHC, WB
Recommended Dilution:	WB: 200-1000 WB positive control: Rat lung tissue lysate IHC: 50-300 Positive control: Human cervical cancer Predicted cell location: Cytoplasm, Nucleus, Cell membrane
Reactivity:	Human, Rat
Host:	Rabbit
Isotype:	IgG
Clonality:	Polyclonal
Immunogen:	Synthetic peptide corresponding to a region derived from 3-15 amino acids of human S100 calcium binding protein A4
Formulation:	PBS pH7.3, 0.05% NaN <sub>3</sub> , 50% glycerol
Concentration:	lot specific
Purification:	Antigen affinity purification
Conjugation:	Unconjugated
Storage:	Store at -20°C as received.
Stability:	Stable for 12 months from date of receipt.
Predicted Protein Size:	12 kDa
Gene Name:	S100 calcium binding protein A4
Database Link:	<a href="#">NP_002952</a> <a href="#">Entrez Gene 24615 Rat</a> <a href="#">Entrez Gene 6275 Human</a> <a href="#">P26447</a>



[View online »](#)

**Background:**

The protein encoded by this gene is a member of the S100 family of proteins containing 2 EF-hand calcium-binding motifs. S100 proteins are localized in the cytoplasm and/or nucleus of a wide range of cells; and involved in the regulation of a number of cellular processes such as cell cycle progression and differentiation. S100 genes include at least 13 members which are located as a cluster on chromosome 1q21. This protein may function in motility; invasion; and tubulin polymerization. Chromosomal rearrangements and altered expression of this gene have been implicated in tumor metastasis. Multiple alternatively spliced variants; encoding the same protein; have been identified.

**Synonyms:**

18A2; 42A; CAPL; FSP1; MTS1; P9KA; PEL98

**Product images:**

kDa

72—

55—

36—

28—

17—

10—



Gel: 12%SDS-PAGE

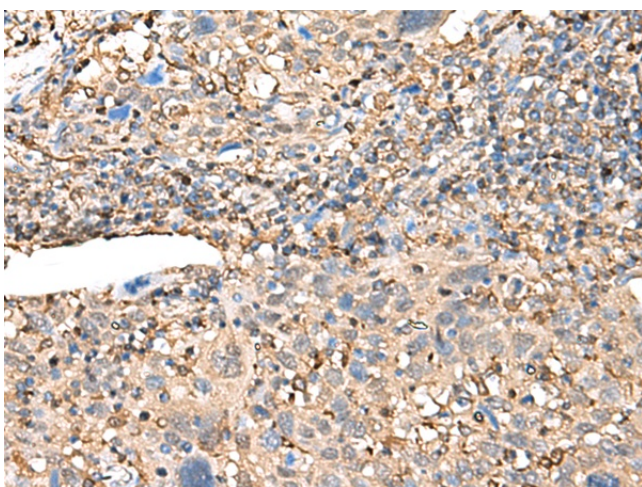
Lysate: 40 µg

Lane: Rat lung tissue lysate

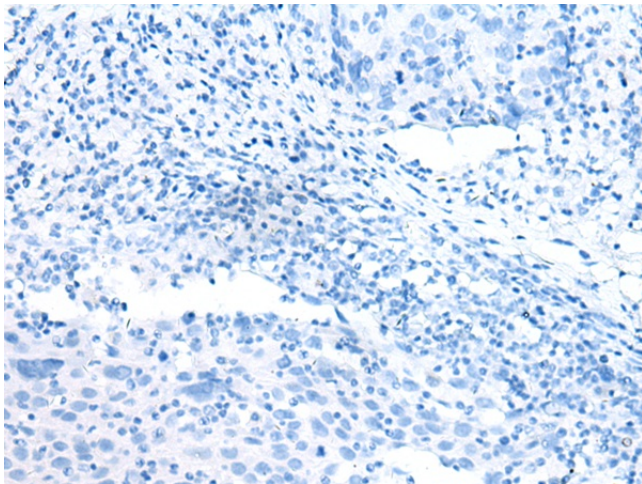
Primary antibody: TA322930 (S100A4 Antibody) at dilution 1/300

Secondary antibody: Goat anti rabbit IgG at 1/5000 dilution

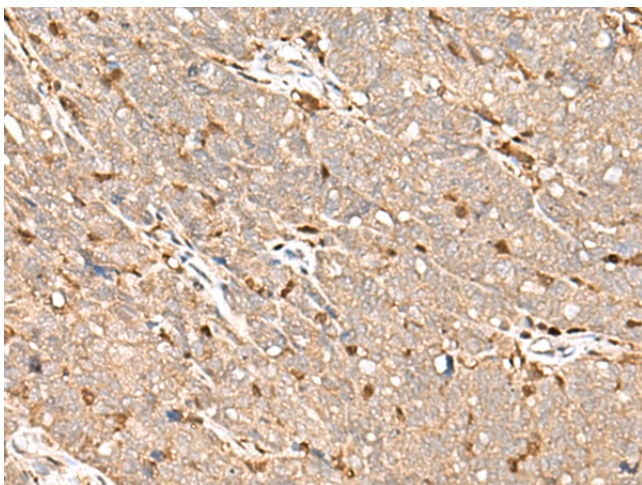
Exposure time: 2 minutes



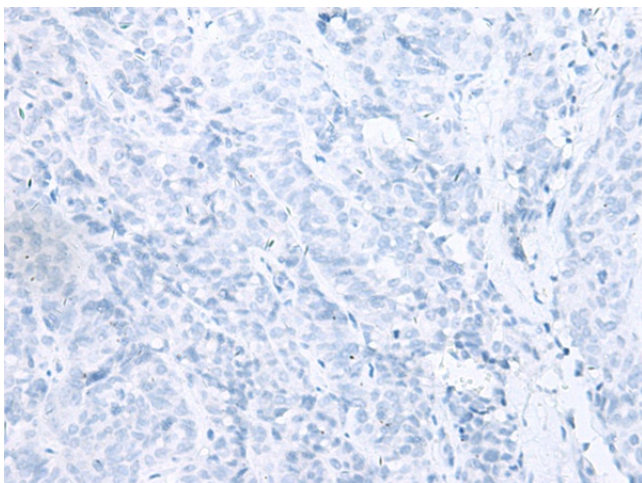
Immunohistochemistry of paraffin-embedded Human cervical cancer tissue using TA322930 (S100A4 Antibody) at dilution 1/90 (Original magnification: ×200)



Immunohistochemistry of paraffin-embedded Human cervical cancer tissue using TA322930 (S100A4 Antibody) at dilution 1/90, treated with synthetic peptide. (Original magnification: ×200)



Immunohistochemistry of paraffin-embedded Human ovarian cancer tissue using TA322930 (S100A4 Antibody) at dilution 1/90 (Original magnification: ×200)



Immunohistochemistry of paraffin-embedded Human ovarian cancer tissue using TA322930 (S100A4 Antibody) at dilution 1/90, treated with synthetic peptide. (Original magnification: ×200)