

Product datasheet for **TA322929S**

S100A4 Rabbit Polyclonal Antibody

Product data:

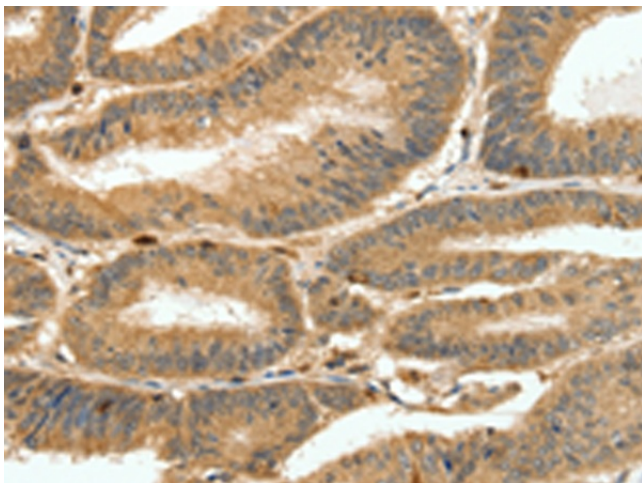
| | |
|------------------------------|---|
| Product Type: | Primary Antibodies |
| Applications: | IHC |
| Recommended Dilution: | IHC: 100-300 Positive control: Human colon cancer Predicted cell location: Cytoplasm |
| Reactivity: | Human |
| Host: | Rabbit |
| Isotype: | IgG |
| Clonality: | Polyclonal |
| Immunogen: | Synthetic peptide corresponding to a region derived from 3-15 amino acids of human S100 calcium binding protein A4 |
| Formulation: | PBS pH7.3, 0.05% NaN ₃ , 50% glycerol |
| Purification: | Antigen affinity purification |
| Conjugation: | Unconjugated |
| Storage: | Store at -20°C as received. |
| Stability: | Stable for 12 months from date of receipt. |
| Gene Name: | S100 calcium binding protein A4 |
| Database Link: | NP_002952 Entrez Gene 6275 Human P26447 |
| Background: | The protein encoded by this gene is a member of the S100 family of proteins containing 2 EF-hand calcium-binding motifs. S100 proteins are localized in the cytoplasm and/or nucleus of a wide range of cells; and involved in the regulation of a number of cellular processes such as cell cycle progression and differentiation. S100 genes include at least 13 members which are located as a cluster on chromosome 1q21. This protein may function in motility; invasion; and tubulin polymerization. Chromosomal rearrangements and altered expression of this gene have been implicated in tumor metastasis. Multiple alternatively spliced variants; encoding the same protein; have been identified. |



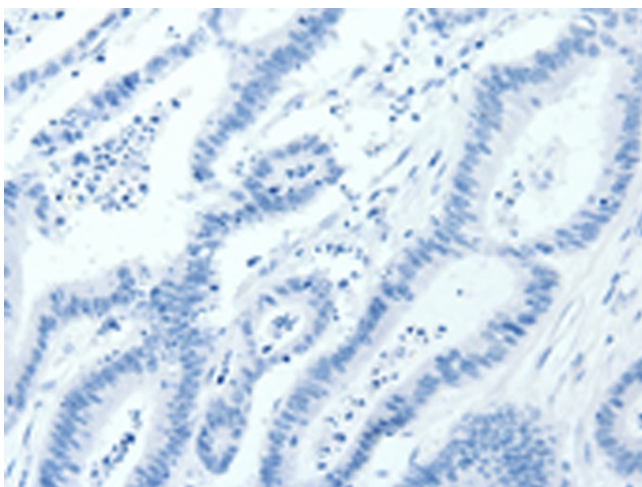
[View online »](#)

Synonyms: 18A2; 42A; CAPL; FSP1; MTS1; P9KA; PEL98

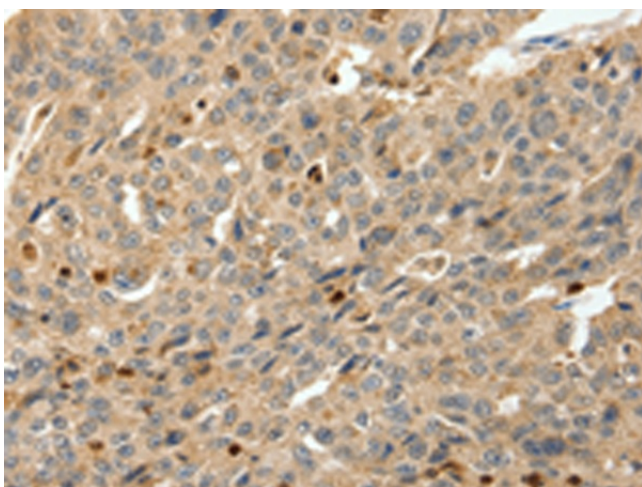
Product images:



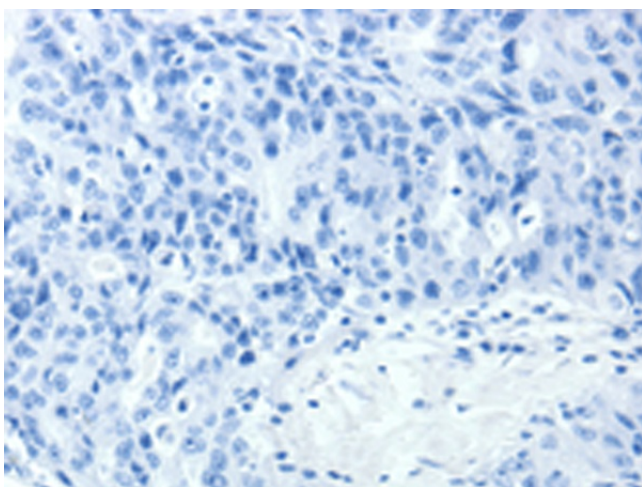
Immunohistochemistry of paraffin-embedded Human colon cancer tissue using [TA322929] (S100A4 Antibody) at dilution 1/80 (Original magnification: $\times 200$)



Immunohistochemistry of paraffin-embedded Human colon cancer tissue using [TA322929] (S100A4 Antibody) at dilution 1/80, treated with synthetic peptide. (Original magnification: $\times 200$)



Immunohistochemistry of paraffin-embedded Human ovarian cancer tissue using [TA322929] (S100A4 Antibody) at dilution 1/80 (Original magnification: $\times 200$)



Immunohistochemistry of paraffin-embedded Human ovarian cancer tissue using [TA322929] (S100A4 Antibody) at dilution 1/80, treated with synthetic peptide. (Original magnification: $\times 200$)