

## Product datasheet for **TA322928S**

### **S100A4 Rabbit Polyclonal Antibody**

#### **Product data:**

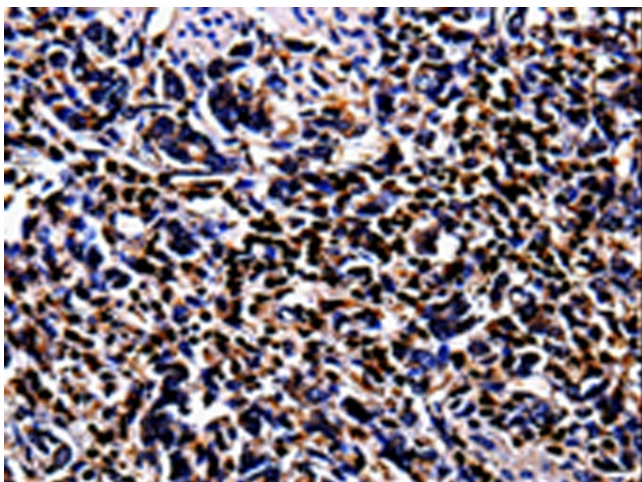
Product Type:	Primary Antibodies
Applications:	IHC
Recommended Dilution:	IHC: 100-200 Positive control: Human stomach cancer Predicted cell location: Cytoplasm, Nucleus
Reactivity:	Human, Mouse, Rat
Host:	Rabbit
Isotype:	IgG
Clonality:	Polyclonal
Immunogen:	Full length fusion protein
Formulation:	PBS pH7.3, 0.05% NaN <sub>3</sub> , 50% glycerol
Purification:	Antigen affinity purification
Conjugation:	Unconjugated
Storage:	Store at -20°C as received.
Stability:	Stable for 12 months from date of receipt.
Gene Name:	S100 calcium binding protein A4
Database Link:	<a href="#">NP_002952</a> <a href="#">Entrez Gene 20198 Mouse</a> <a href="#">Entrez Gene 24615 Rat</a> <a href="#">Entrez Gene 6275 Human</a> <a href="#">P26447</a>

**Background:** The protein encoded by this gene is a member of the S100 family of proteins containing 2 EF-hand calcium-binding motifs. S100 proteins are localized in the cytoplasm and/or nucleus of a wide range of cells; and involved in the regulation of a number of cellular processes such as cell cycle progression and differentiation. S100 genes include at least 13 members which are located as a cluster on chromosome 1q21. This protein may function in motility; invasion; and tubulin polymerization. Chromosomal rearrangements and altered expression of this gene have been implicated in tumor metastasis. Multiple alternatively spliced variants; encoding the same protein; have been identified.

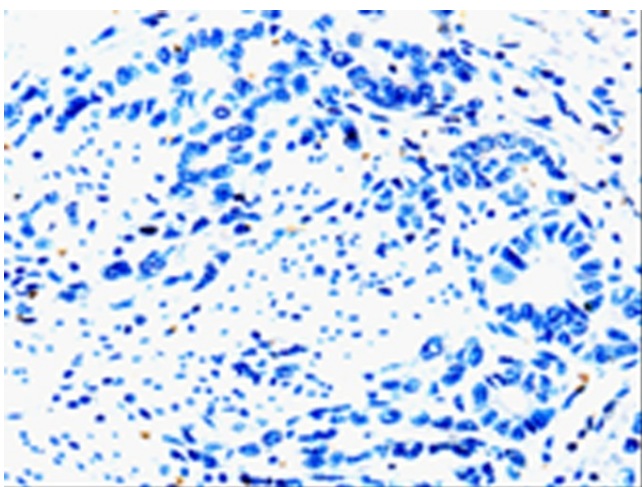
**Synonyms:** 18A2; 42A; CAPL; FSP1; MTS1; P9KA; PEL98



[View online »](#)

**Product images:**

Immunohistochemistry of paraffin-embedded Human stomach cancer tissue using [TA322928] (S100A4 Antibody) at dilution 1/100 (Original magnification: ×200)



Immunohistochemistry of paraffin-embedded Human stomach cancer tissue using [TA322928] (S100A4 Antibody) at dilution 1/100, treated with fusion protein. (Original magnification: ×200)