

## Product datasheet for **TA322923**

### SCTR Rabbit Polyclonal Antibody

#### Product data:

Product Type:	Primary Antibodies
Applications:	IHC, WB
Recommended Dilution:	WB: 200-1000 WB positive control: Human stomach tissue lysate IHC: 20-100 Positive control: Human tonsil Predicted cell location: Cell membrane and Cytoplasm
Reactivity:	Human
Host:	Rabbit
Isotype:	IgG
Clonality:	Polyclonal
Immunogen:	Synthetic peptide corresponding to a region derived from 120-134 amino acids of human secretin receptor
Formulation:	PBS pH7.3, 0.05% NaN <sub>3</sub> , 50% glycerol
Concentration:	lot specific
Purification:	Antigen affinity purification
Conjugation:	Unconjugated
Storage:	Store at -20°C as received.
Stability:	Stable for 12 months from date of receipt.
Predicted Protein Size:	50 kDa
Gene Name:	secretin receptor
Database Link:	<a href="#">NP_002971</a> <a href="#">Entrez Gene 6344 Human P47872</a>
Background:	The protein encoded by this gene is a G protein-coupled receptor and belongs to the glucagon-VIP-secretin receptor family. It binds secretin which is the most potent regulator of pancreatic bicarbonate; electrolyte and volume secretion. Secretin and its receptor are suggested to be involved in pancreatic cancer and autism.



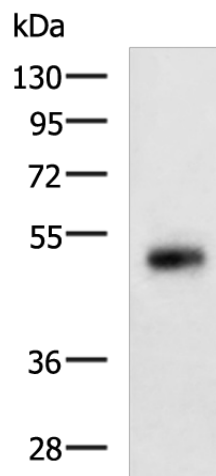
[View online »](#)

Synonyms: SR

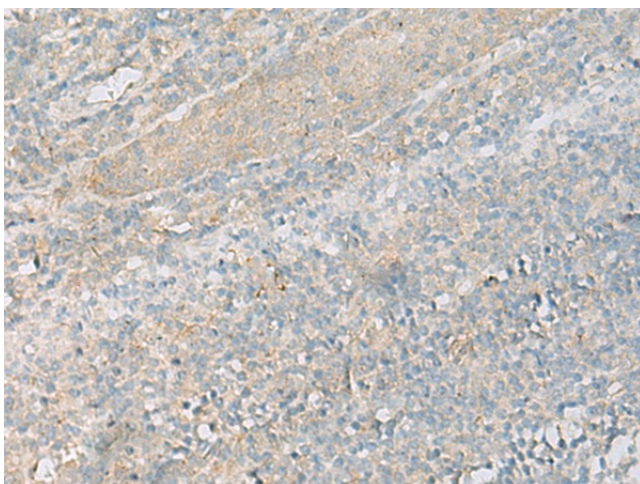
Protein Families: Druggable Genome, Transmembrane

Protein Pathways: Neuroactive ligand-receptor interaction

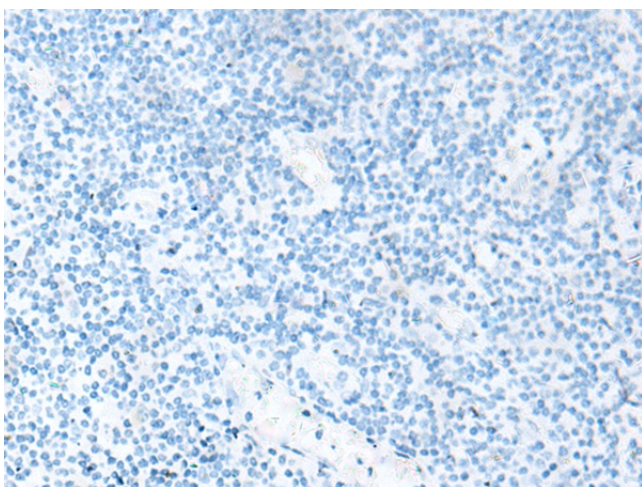
### Product images:



Gel: 8%SDS-PAGE  
Lysate: 40  $\mu$ g  
Lane: Human stomach tissue lysate  
Primary antibody: TA322923 (SCTR Antibody) at dilution 1/300  
Secondary antibody: Goat anti rabbit IgG at 1/5000 dilution  
Exposure time: 10 minutes



Immunohistochemistry of paraffin-embedded Human tonsil tissue using TA322923 (SCTR Antibody) at dilution 1/20 (Original magnification:  $\times 200$ )



Immunohistochemistry of paraffin-embedded Human tonsil tissue using TA322923 (SCTR Antibody) at dilution 1/20, treated with synthetic peptide. (Original magnification: x200)