

Product datasheet for **TA322922**

TARC (CCL17) Rabbit Polyclonal Antibody

Product data:

Product Type:	Primary Antibodies
Applications:	IHC, WB
Recommended Dilution:	WB: 500-2000 WB positive control: Mouse spleen tissue lysate IHC: 50-100 Positive control: Human esophagus cancer Predicted cell location: Secreted
Reactivity:	Human, Mouse
Host:	Rabbit
Isotype:	IgG
Clonality:	Polyclonal
Immunogen:	Synthetic peptide corresponding to a region derived from 73-86 amino acids of human chemokine (C-C motif) ligand 17
Formulation:	PBS pH7.3, 0.05% NaN ₃ , 50% glycerol
Concentration:	lot specific
Purification:	Antigen affinity purification
Conjugation:	Unconjugated
Storage:	Store at -20°C as received.
Stability:	Stable for 12 months from date of receipt.
Predicted Protein Size:	11 kDa
Gene Name:	C-C motif chemokine ligand 17
Database Link:	NP_002978 Entrez Gene 20295 Mouse Entrez Gene 6361 Human Q92583



[View online »](#)

Background: This gene is one of several Cys-Cys (CC) cytokine genes clustered on the q arm of chromosome 16. Cytokines are a family of secreted proteins involved in immunoregulatory and inflammatory processes. The CC cytokines are proteins characterized by two adjacent cysteines. The cytokine encoded by this gene displays chemotactic activity for T lymphocytes; but not monocytes or granulocytes. The product of this gene binds to chemokine receptors CCR4 and CCR8. This chemokine plays important roles in T cell development in thymus as well as in trafficking and activation of mature T cells.

Synonyms: A-152E5.3; ABCD-2; SCYA17; TARC

Protein Families: Druggable Genome, Secreted Protein

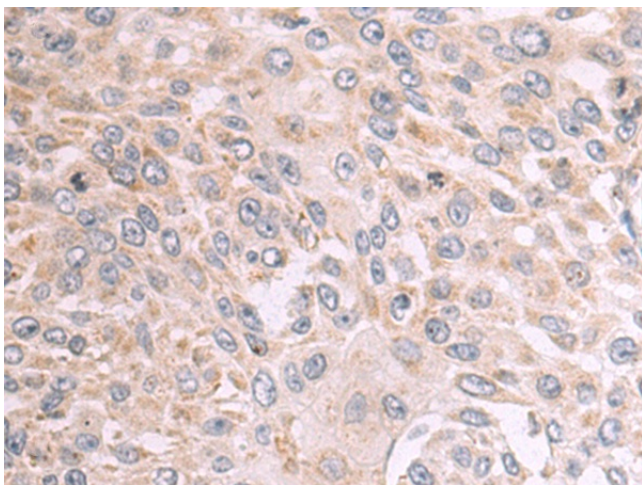
Protein Pathways: Chemokine signaling pathway, Cytokine-cytokine receptor interaction

Product images:

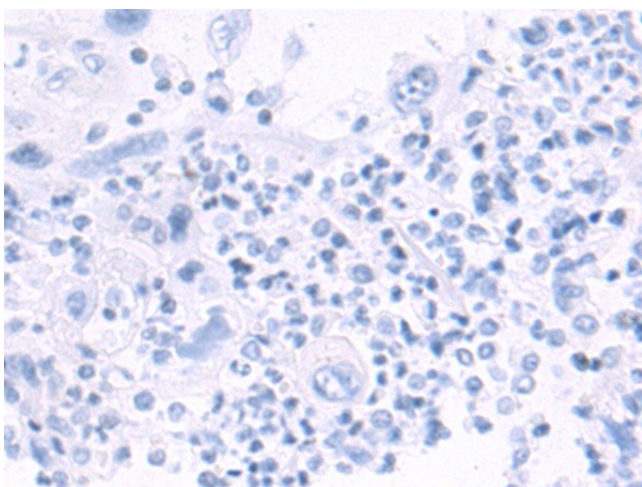
kDa
95 —
72 —
55 —
36 —
28 —
17 —
10 —



Gel: 12%SDS-PAGE
Lysate: 40 µg
Lane: Mouse spleen tissue lysate
Primary antibody: TA322922 (CCL17 Antibody) at dilution 1/300
Secondary antibody: Goat anti rabbit IgG at 1/5000 dilution
Exposure time: 30 seconds



Immunohistochemistry of paraffin-embedded Human esophagus cancer tissue using TA322922 (CCL17 Antibody) at dilution 1/60 (Original magnification: ×200)



Immunohistochemistry of paraffin-embedded Human esophagus cancer tissue using TA322922 (CCL17 Antibody) at dilution 1/60, treated with synthetic peptide. (Original magnification: $\times 200$)