

## Product datasheet for **TA322921S**

### TARC (CCL17) Rabbit Polyclonal Antibody

#### Product data:

Product Type:	Primary Antibodies
Applications:	IHC, WB
Recommended Dilution:	WB: 500-2000 WB positive control: Mouse spleen tissue lysate IHC: 50-100 Positive control: Human thyroid cancer Predicted cell location: Secreted
Reactivity:	Human, Mouse
Host:	Rabbit
Isotype:	IgG
Clonality:	Polyclonal
Immunogen:	Synthetic peptide corresponding to a region derived from 73-86 amino acids of human chemokine (C-C motif) ligand 17
Formulation:	PBS pH7.3, 0.05% NaN <sub>3</sub> , 50% glycerol
Purification:	Antigen affinity purification
Conjugation:	Unconjugated
Storage:	Store at -20°C as received.
Stability:	Stable for 12 months from date of receipt.
Predicted Protein Size:	11 kDa
Gene Name:	C-C motif chemokine ligand 17
Database Link:	<a href="#">NP_002978</a> <a href="#">Entrez Gene 20295 Mouse</a> <a href="#">Entrez Gene 6361 Human</a> <a href="#">Q92583</a>



[View online »](#)

**Background:** This gene is one of several Cys-Cys (CC) cytokine genes clustered on the q arm of chromosome 16. Cytokines are a family of secreted proteins involved in immunoregulatory and inflammatory processes. The CC cytokines are proteins characterized by two adjacent cysteines. The cytokine encoded by this gene displays chemotactic activity for T lymphocytes; but not monocytes or granulocytes. The product of this gene binds to chemokine receptors CCR4 and CCR8. This chemokine plays important roles in T cell development in thymus as well as in trafficking and activation of mature T cells.

**Synonyms:** A-152E5.3; ABCD-2; SCYA17; TARC

**Protein Families:** Druggable Genome, Secreted Protein

**Protein Pathways:** Chemokine signaling pathway, Cytokine-cytokine receptor interaction

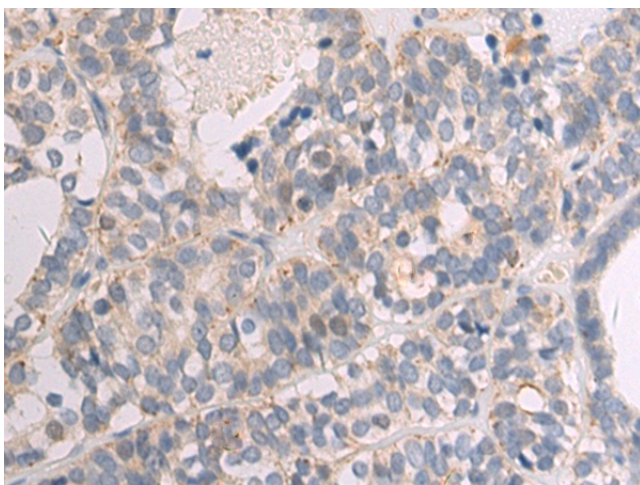
### Product images:

kDa

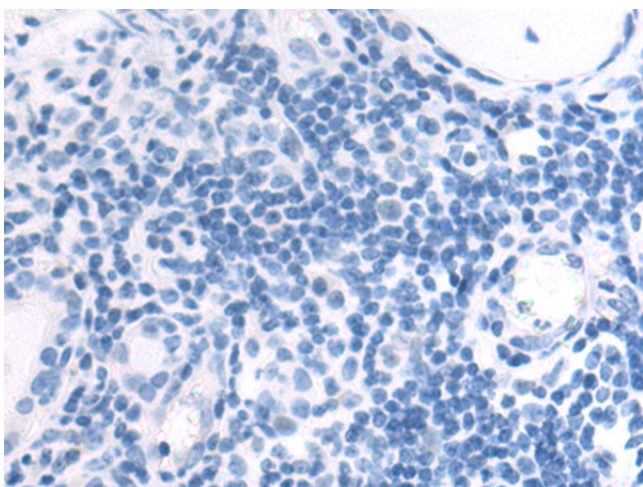
95—  
72—  
55—  
36—  
28—  
17—  
10—



Gel: 12%SDS-PAGE  
Lysate: 40 µg  
Lane 1-4: HepG2 cell  
293T cell  
Human cerebrum tissue  
Mouse kidney tissue lysates  
Primary antibody: [TA322921] (CCL17 Antibody)  
at dilution 1/700  
Secondary antibody: Goat anti rabbit IgG at  
1/5000 dilution  
Exposure time: 15 seconds



Immunohistochemistry of paraffin-embedded  
Human liver cancer tissue using [TA322921]  
(CCL17 Antibody) at dilution 1/55 (Original  
magnification: ×200)



Immunohistochemistry of paraffin-embedded Human liver cancer tissue using [TA322921] (CCL17 Antibody) at dilution 1/55, treated with synthetic peptide. (Original magnification: ×200)