

Product datasheet for **TA322920S**

Eotaxin 2 (CCL24) Rabbit Polyclonal Antibody

Product data:

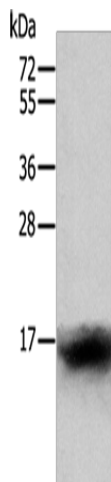
Product Type:	Primary Antibodies
Applications:	WB
Recommended Dilution:	WB: 200-1000 WB positive control: Human lymphoma tissue
Reactivity:	Human
Host:	Rabbit
Isotype:	IgG
Clonality:	Polyclonal
Immunogen:	Fusion protein corresponding to a region derived from 27-119 amino acids of human chemokine (C-C motif) ligand 24chemokine (C-C motif) ligand 24
Formulation:	PBS pH7.3, 0.05% NaN ₃ , 50% glycerol
Purification:	Antigen affinity purification
Conjugation:	Unconjugated
Storage:	Store at -20°C as received.
Stability:	Stable for 12 months from date of receipt.
Predicted Protein Size:	13 kDa
Gene Name:	C-C motif chemokine ligand 24
Database Link:	NP_002982 Entrez Gene 6369 Human O00175
Background:	This gene belongs to the subfamily of small cytokine CC genes. Cytokines are a family of secreted proteins involved in immunoregulatory and inflammatory processes. The CC cytokines are proteins characterized by two adjacent cysteines. The cytokine encoded by this gene displays chemotactic activity on resting T lymphocytes; a minimal activity on neutrophils; and is negative on monocytes and activated T lymphocytes. The protein is also a strong suppressor of colony formation by a multipotential hematopoietic progenitor cell line.
Synonyms:	Ckb-6; MPIF-2; MPIF2; SCYA24
Protein Families:	Druggable Genome, Secreted Protein, Transmembrane



[View online »](#)

Protein Pathways: Chemokine signaling pathway, Cytokine-cytokine receptor interaction

Product images:



Gel: 12%SDS-PAGE
Lysate: 40 µg
Lane: Human lymphoma tissue
Primary antibody: [TA322920] (CCL24 Antibody)
at dilution 1/400
Secondary antibody: Goat anti rabbit IgG at
1/8000 dilution
Exposure time: 1 minute