

Product datasheet for **TA322915S**

SLC1A4 Rabbit Polyclonal Antibody

Product data:

| | |
|-------------------------|--|
| Product Type: | Primary Antibodies |
| Applications: | IHC, WB |
| Recommended Dilution: | WB: 1000-5000 WB positive control: Human liver cancer tissue IHC: 100-300 Positive control: Human ovarian cancer Predicted cell location: Cytoplasm |
| Reactivity: | Human, Mouse |
| Host: | Rabbit |
| Isotype: | IgG |
| Clonality: | Polyclonal |
| Immunogen: | Synthetic peptide corresponding to a region derived from 520-532 amino acids of Human solute carrier family 1 (glutamate/neutral amino acid transporter), member 4 |
| Formulation: | PBS pH7.3, 0.05% NaN ₃ , 50% glycerol |
| Purification: | Antigen affinity purification |
| Conjugation: | Unconjugated |
| Storage: | Store at -20°C as received. |
| Stability: | Stable for 12 months from date of receipt. |
| Predicted Protein Size: | 56 kDa |
| Gene Name: | solute carrier family 1 member 4 |
| Database Link: | NP_003029 Entrez Gene 55963 Mouse Entrez Gene 6509 Human P43007 |



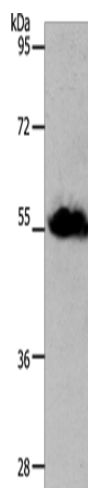
[View online »](#)

Background: Neutral amino acid transporter A?is a?protein?that in humans is encoded by the?SLC1A4? gene. In melanocytic cells SLC1A4 gene expression may be regulated by?MITF. ASCT1 does not transport glutamate or aspartate but alanine; serine; cysteine; and threonine instead. ASCT1 transporter functions primarily as an amino acid exchanger. Transport is associated with a chloride channel activity that is thermodynamically uncoupled from amino acid transport.

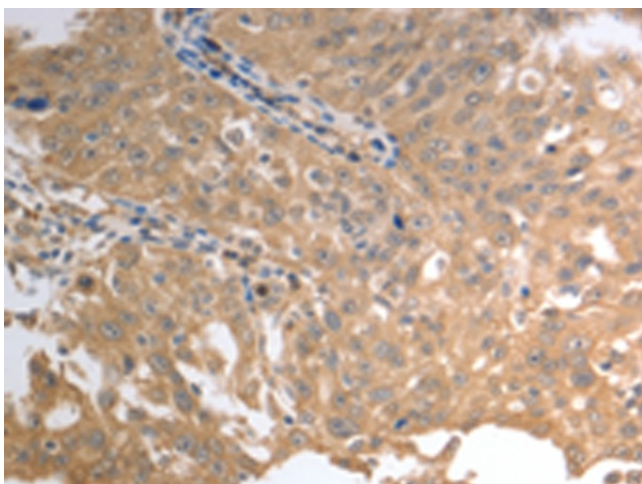
Synonyms: ASCT1; SATT; SPATCCM

Protein Families: Druggable Genome, Transmembrane

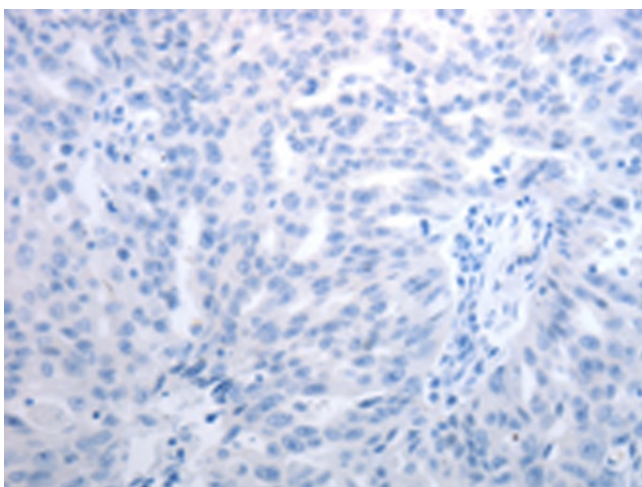
Product images:



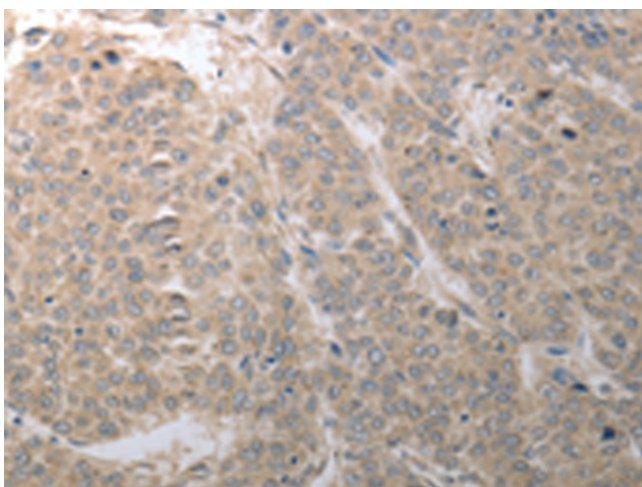
Gel: 10+12%SDS-PAGE
Lysate: 30 µg
Lane: Human liver cancer tissue
Primary antibody: [TA322915] (SLC1A4 Antibody) at dilution 1/1250
Secondary antibody: Goat anti rabbit IgG at 1/8000 dilution
Exposure time: 20 seconds



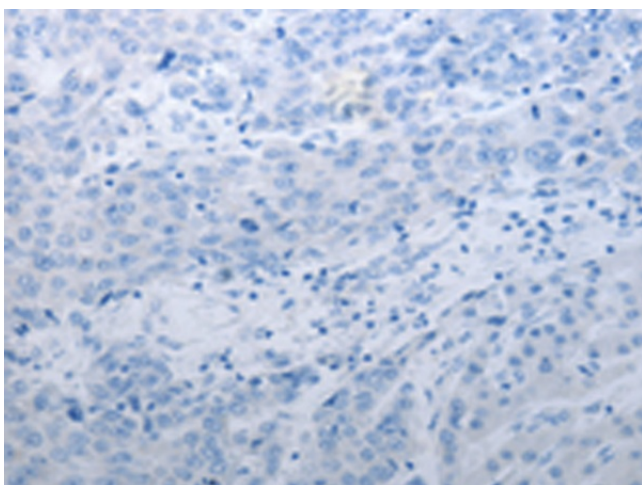
Immunohistochemistry of paraffin-embedded Human ovarian cancer tissue using [TA322915] (SLC1A4 Antibody) at dilution 1/70 (Original magnification: ×200)



Immunohistochemistry of paraffin-embedded Human ovarian cancer tissue using [TA322915] (SLC1A4 Antibody) at dilution 1/70, treated with synthetic peptide. (Original magnification: $\times 200$)



Immunohistochemistry of paraffin-embedded Human liver cancer tissue using [TA322915] (SLC1A4 Antibody) at dilution 1/70 (Original magnification: $\times 200$)



Immunohistochemistry of paraffin-embedded Human liver cancer tissue using [TA322915] (SLC1A4 Antibody) at dilution 1/70, treated with synthetic peptide. (Original magnification: $\times 200$)