

Product datasheet for **TA322915**

SLC1A4 Rabbit Polyclonal Antibody

Product data:

Product Type:	Primary Antibodies
Applications:	IHC, WB
Recommended Dilution:	WB: 1000-5000 WB positive control: Human liver cancer tissue IHC: 100-300 Positive control: Human ovarian cancer Predicted cell location: Cytoplasm
Reactivity:	Human, Mouse
Host:	Rabbit
Isotype:	IgG
Clonality:	Polyclonal
Immunogen:	Synthetic peptide corresponding to a region derived from 520-532 amino acids of Human solute carrier family 1 (glutamate/neutral amino acid transporter), member 4
Formulation:	PBS pH7.3, 0.05% NaN ₃ , 50% glycerol
Concentration:	lot specific
Purification:	Antigen affinity purification
Conjugation:	Unconjugated
Storage:	Store at -20°C as received.
Stability:	Stable for 12 months from date of receipt.
Predicted Protein Size:	56 kDa
Gene Name:	solute carrier family 1 member 4
Database Link:	NP_003029 Entrez Gene 55963 Mouse Entrez Gene 6509 Human P43007



[View online »](#)

Background:

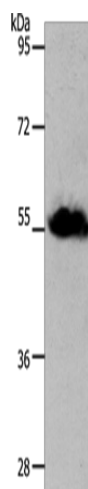
Neutral amino acid transporter ASCT1 is a protein that in humans is encoded by the SLC1A4 gene. In melanocytic cells SLC1A4 gene expression may be regulated by MITF. ASCT1 does not transport glutamate or aspartate but alanine; serine; cysteine; and threonine instead. ASCT1 transporter functions primarily as an amino acid exchanger. Transport is associated with a chloride channel activity that is thermodynamically uncoupled from amino acid transport.

Synonyms:

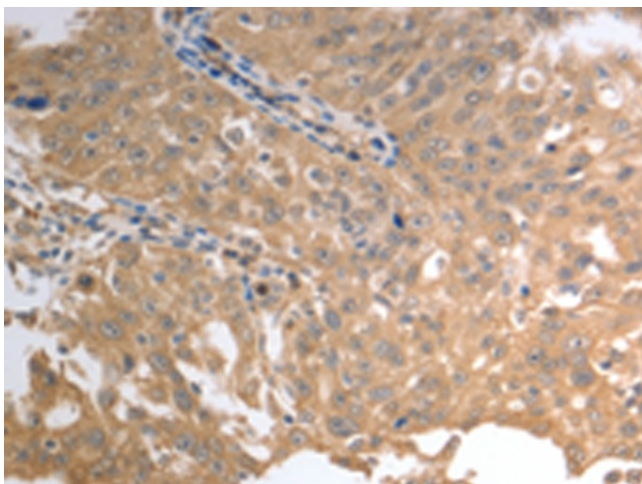
ASCT1; SATT; SPATCCM

Protein Families:

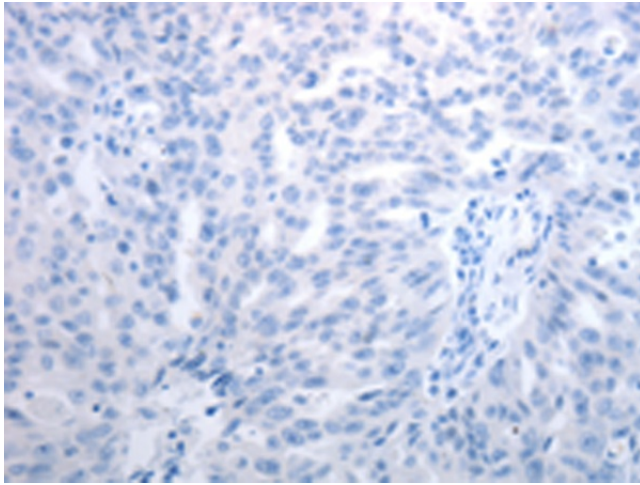
Druggable Genome, Transmembrane

Product images:

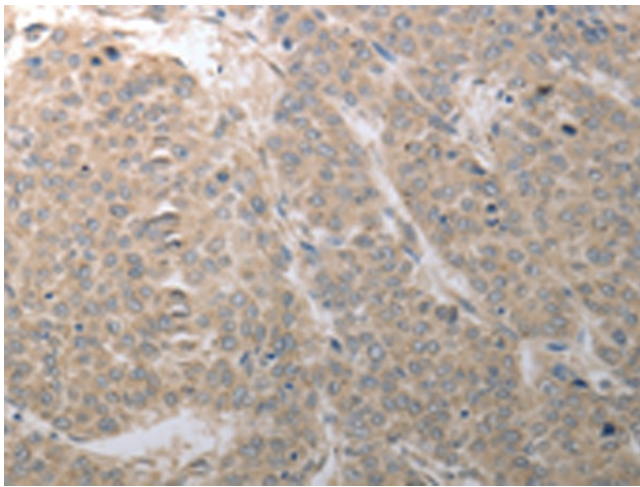
Gel: 10+12%SDS-PAGE
Lysate: 30 µg
Lane: Human liver cancer tissue
Primary antibody: TA322915 (SLC1A4 Antibody) at dilution 1/1250
Secondary antibody: Goat anti rabbit IgG at 1/8000 dilution
Exposure time: 20 seconds



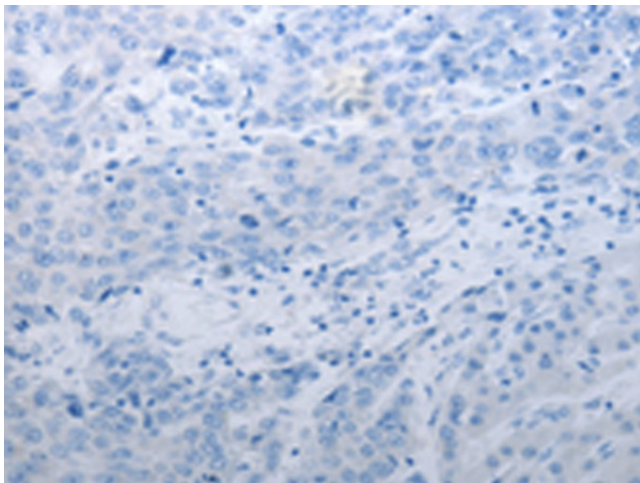
Immunohistochemistry of paraffin-embedded Human ovarian cancer tissue using TA322915 (SLC1A4 Antibody) at dilution 1/70 (Original magnification: ×200)



Immunohistochemistry of paraffin-embedded Human ovarian cancer tissue using TA322915 (SLC1A4 Antibody) at dilution 1/70, treated with synthetic peptide. (Original magnification: ×200)



Immunohistochemistry of paraffin-embedded Human liver cancer tissue using TA322915 (SLC1A4 Antibody) at dilution 1/70 (Original magnification: ×200)



Immunohistochemistry of paraffin-embedded Human liver cancer tissue using TA322915 (SLC1A4 Antibody) at dilution 1/70, treated with synthetic peptide. (Original magnification: ×200)