

Product datasheet for **TA322912S**

SLC10A1 Rabbit Polyclonal Antibody

Product data:

Product Type:	Primary Antibodies
Applications:	IHC
Recommended Dilution:	IHC: 15-50 Positive control: Human lung cancer Predicted cell location: Cytoplasm
Reactivity:	Human, Mouse
Host:	Rabbit
Isotype:	IgG
Clonality:	Polyclonal
Immunogen:	Synthetic peptide corresponding to a region derived from 2-15 amino acids of Human solute carrier family 10 (sodium/bile acid cotransporter family), member 1
Formulation:	PBS pH7.3, 0.05% NaN ₃ , 50% glycerol
Concentration:	lot specific
Purification:	Antigen affinity purification
Conjugation:	Unconjugated
Storage:	Store at -20°C as received.
Stability:	Stable for 12 months from date of receipt.
Gene Name:	solute carrier family 10 member 1
Database Link:	NP_003040 Entrez Gene 20493 Mouse Entrez Gene 6554 Human Q14973



[View online »](#)

Background:

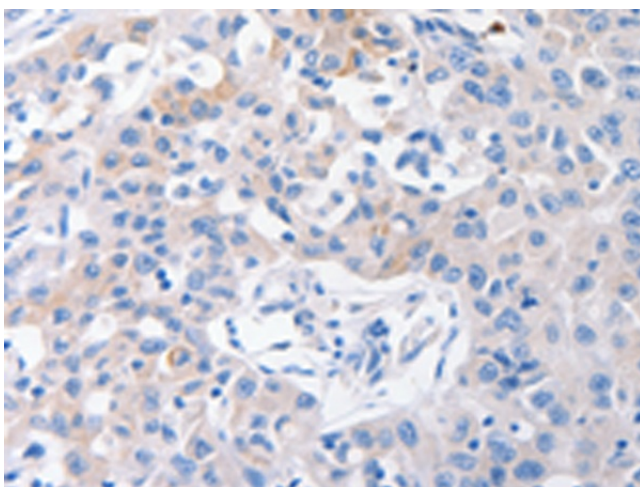
The protein encoded by this gene belongs to the sodium/bile acid cotransporter family; which are integral membrane glycoproteins that participate in the enterohepatic circulation of bile acids. Two homologous transporters are involved in the reabsorption of bile acids; the ileal sodium/bile acid cotransporter with an apical cell localization that absorbs bile acids from the intestinal lumen; bile duct and kidney; and the liver-specific sodium/bile acid cotransporter; represented by this protein; that is found in the basolateral membranes of hepatocytes. Bile acids are the catabolic product of cholesterol metabolism; hence this protein is important for cholesterol homeostasis.

Synonyms:

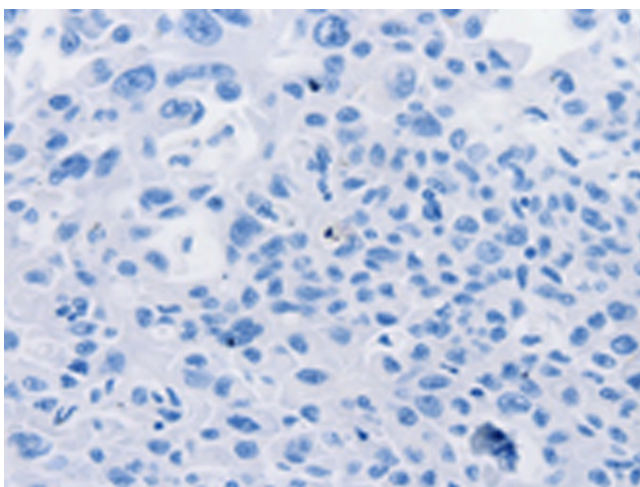
NTCP

Protein Families:

Druggable Genome, Transmembrane

Product images:


Immunohistochemistry of paraffin-embedded Human lung cancer tissue using [TA322912] (SLC10A1 Antibody) at dilution 1/31 (Original magnification: ×200)



Immunohistochemistry of paraffin-embedded Human lung cancer tissue using [TA322912] (SLC10A1 Antibody) at dilution 1/31, treated with synthetic peptide. (Original magnification: ×200)