

## Product datasheet for **TA322911**

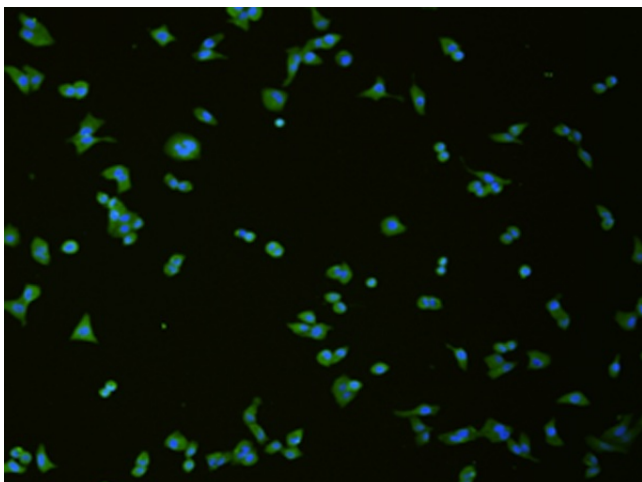
### Vesicular Acetylcholine Transporter (SLC18A3) Rabbit Polyclonal Antibody

#### Product data:

Product Type:	Primary Antibodies
Applications:	IF
Recommended Dilution:	IF: 50-200 Positive control: Hela and HepG2 cell Predicted cell location: Cytoplasm
Reactivity:	Human
Host:	Rabbit
Isotype:	IgG
Clonality:	Polyclonal
Immunogen:	Synthetic peptide corresponding to a region derived from 504-517 amino acids of human solute carrier family 18 (vesicular acetylcholine), member 3
Formulation:	PBS pH7.3, 0.05% NaN <sub>3</sub> , 50% glycerol
Concentration:	lot specific
Purification:	Antigen affinity purification
Conjugation:	Unconjugated
Storage:	Store at -20°C as received.
Stability:	Stable for 12 months from date of receipt.
Gene Name:	solute carrier family 18 member A3
Database Link:	<a href="#">NP_003046</a> <a href="#">Entrez Gene 6572 Human</a> <a href="#">Q16572</a>
Background:	This gene is a member of the vesicular amine transporter family. The encoded transmembrane protein transports acetylcholine into secretory vesicles for release into the extracellular space. Acetylcholine transport utilizes a proton gradient established by a vacuolar ATPase. This gene is located within the first intron of the choline acetyltransferase gene.?
Synonyms:	VACHT
Protein Families:	Druggable Genome, Transmembrane



[View online »](#)

**Product images:**

The image is immunofluorescence of HeLa cell using TA322911 (SLC18A3 Antibody) at dilution 1/50.