

## Product datasheet for **TA322909S**

### **BRG1 (SMARCA4) Rabbit Polyclonal Antibody**

#### **Product data:**

<b>Product Type:</b>	Primary Antibodies
<b>Applications:</b>	IHC, WB
<b>Recommended Dilution:</b>	WB: 200-1000 WB positive control: K562, 293T cells and hepG2 IHC: 50-200 Positive control: Human thyroid cancer Predicted cell location: Cytoplasm, Nucleus
<b>Reactivity:</b>	Human, Mouse, Rat
<b>Host:</b>	Rabbit
<b>Isotype:</b>	IgG
<b>Clonality:</b>	Polyclonal
<b>Immunogen:</b>	Synthetic peptide corresponding to a region derived from 1460-1474 amino acids of Human SWI/SNF related, matrix associated, actin dependent regulator of chromatin, subfamily a, member?
<b>Formulation:</b>	PBS pH7.3, 0.05% NaN <sub>3</sub> , 50% glycerol
<b>Purification:</b>	Antigen affinity purification
<b>Conjugation:</b>	Unconjugated
<b>Storage:</b>	Store at -20°C as received.
<b>Stability:</b>	Stable for 12 months from date of receipt.
<b>Predicted Protein Size:</b>	185 kDa
<b>Gene Name:</b>	SWI/SNF related, matrix associated, actin dependent regulator of chromatin, subfamily a, member 4
<b>Database Link:</b>	<a href="#">NP_003063</a> <a href="#">Entrez Gene 20586 Mouse</a> <a href="#">Entrez Gene 171379 Rat</a> <a href="#">Entrez Gene 6597 Human</a> <a href="#">P51532</a>



[View online »](#)

**Background:**

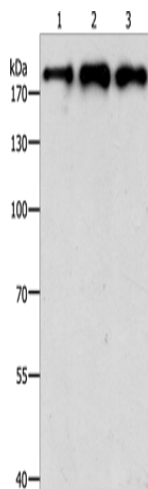
The protein encoded by this gene is a member of the SWI/SNF family of proteins and is similar to the brahma protein of *Drosophila*. Members of this family have helicase and ATPase activities and are thought to regulate transcription of certain genes by altering the chromatin structure around those genes. The encoded protein is part of the large ATP-dependent chromatin remodeling complex SNF/SWI; which is required for transcriptional activation of genes normally repressed by chromatin. In addition; this protein can bind BRCA1; as well as regulate the expression of the tumorigenic protein CD44. Mutations in this gene cause rhabdoid tumor predisposition syndrome type 2. Multiple transcript variants encoding different isoforms have been found for this gene.

**Synonyms:**

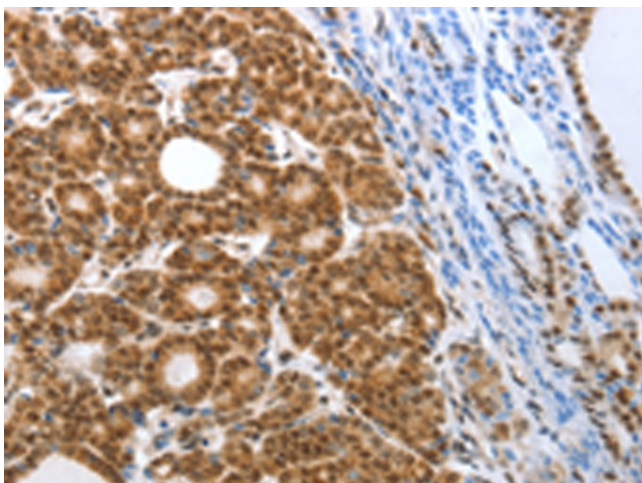
BAF190; BAF190A; BRG1; CSS4; hSNF2b; MRD16; RTPS2; SNF2; SNF2L4; SNF2LB; SWI2

**Protein Families:**

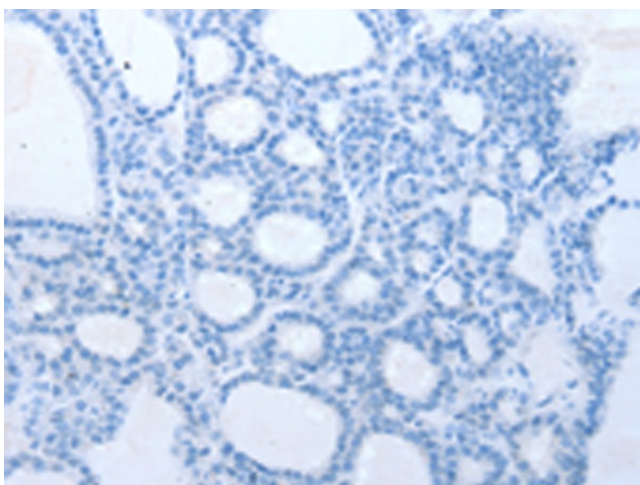
Druggable Genome, Transcription Factors

**Product images:**

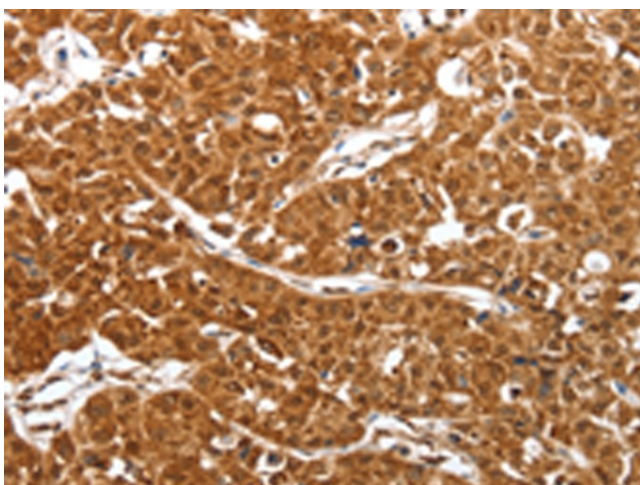
Gel: 8%SDS-PAGE  
Lysate: 50 µg  
Lane 1-3: K562 cells  
293T cells  
HepG2 cells  
Primary antibody: [TA322909] (SMARCA4  
Antibody) at dilution 1/300  
Secondary antibody: Goat anti rabbit IgG at  
1/8000 dilution  
Exposure time: 1 minute



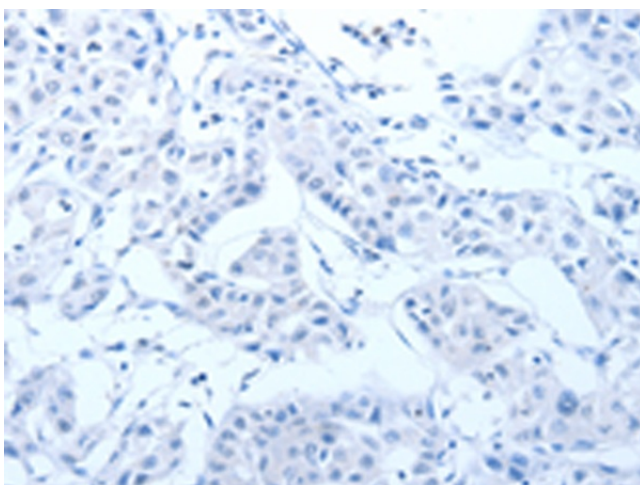
Immunohistochemistry of paraffin-embedded  
Human thyroid cancer tissue using [TA322909]  
(SMARCA4 Antibody) at dilution 1/50 (Original  
magnification: ×200)



Immunohistochemistry of paraffin-embedded Human thyroid cancer tissue using [TA322909] (SMARCA4 Antibody) at dilution 1/50, treated with synthetic peptide. (Original magnification: ×200)



Immunohistochemistry of paraffin-embedded Human lung cancer tissue using [TA322909] (SMARCA4 Antibody) at dilution 1/50 (Original magnification: ×200)



Immunohistochemistry of paraffin-embedded Human lung cancer tissue using [TA322909] (SMARCA4 Antibody) at dilution 1/50, treated with synthetic peptide. (Original magnification: ×200)