

Product datasheet for **TA322907**

SNAP25 Rabbit Polyclonal Antibody

Product data:

Product Type:	Primary Antibodies
Applications:	IHC, WB
Recommended Dilution:	WB: 500-2000 WB positive control: Hela cells IHC: 25-100 Positive control: Human brain Predicted cell location: Cytoplasm
Reactivity:	Human, Mouse, Rat
Host:	Rabbit
Isotype:	IgG
Clonality:	Polyclonal
Immunogen:	Full length fusion protein
Formulation:	PBS pH7.3, 0.05% NaN ₃ , 50% glycerol
Concentration:	lot specific
Purification:	Antigen affinity purification
Conjugation:	Unconjugated
Storage:	Store at -20°C as received.
Stability:	Stable for 12 months from date of receipt.
Predicted Protein Size:	23 kDa
Gene Name:	synaptosome associated protein 25kDa
Database Link:	NP_003072 Entrez Gene 20614 Mouse Entrez Gene 25012 Rat Entrez Gene 6616 Human P60880



[View online »](#)

Background:

Synaptic vesicle membrane docking and fusion is mediated by SNAREs (soluble N-ethylmaleimide-sensitive factor attachment protein receptors) located on the vesicle membrane (v-SNAREs) and the target membrane (t-SNAREs). The assembled v-SNARE/t-SNARE complex consists of a bundle of four helices; one of which is supplied by v-SNARE and the other three by t-SNARE. For t-SNAREs on the plasma membrane; the protein syntaxin supplies one helix and the protein encoded by this gene contributes the other two. Therefore; this gene product is a presynaptic plasma membrane protein involved in the regulation of neurotransmitter release. Two alternative transcript variants encoding different protein isoforms have been described for this gene.?

Synonyms:

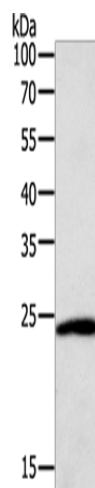
bA416N4.2; dJ1068F16.2; RIC-4; RIC4; SEC9; SNAP; SNAP-25

Protein Families:

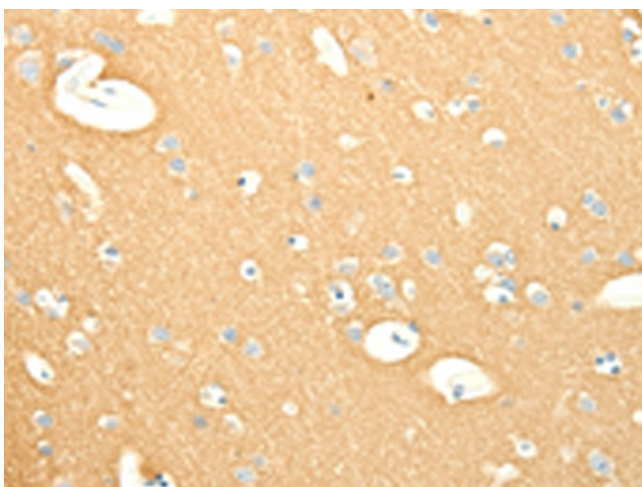
Druggable Genome

Protein Pathways:

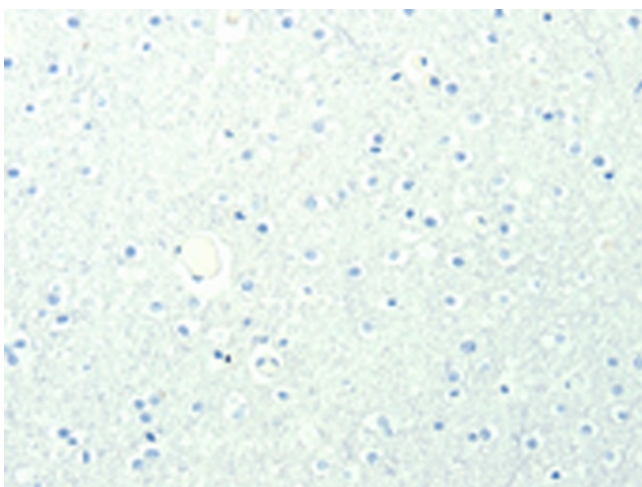
SNARE interactions in vesicular transport

Product images:

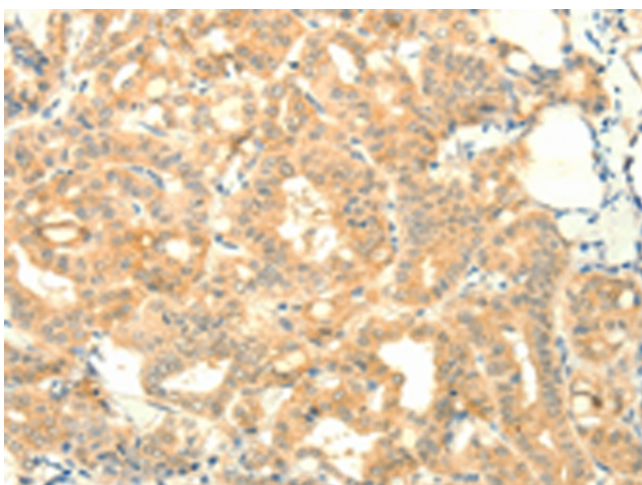
Gel: 12%SDS-PAGE
Lysate: 40 µg
Lane: HeLa cells
Primary antibody: TA322907 (SNAP25 Antibody)
at dilution 1/400
Secondary antibody: Goat anti rabbit IgG at
1/8000 dilution
Exposure time: 10 seconds



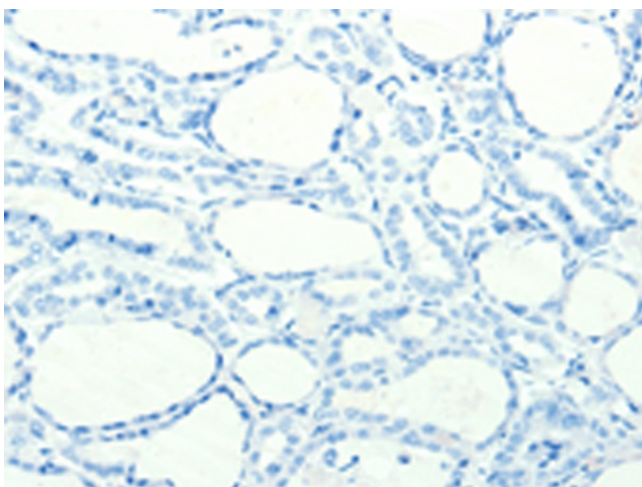
Immunohistochemistry of paraffin-embedded Human brain tissue using TA322907 (SNAP25 Antibody) at dilution 1/25 (Original magnification: $\times 200$)



Immunohistochemistry of paraffin-embedded Human brain tissue using TA322907 (SNAP25 Antibody) at dilution 1/25, treated with fusion protein. (Original magnification: $\times 200$)



Immunohistochemistry of paraffin-embedded Human thyroid cancer tissue using TA322907 (SNAP25 Antibody) at dilution 1/25 (Original magnification: $\times 200$)



Immunohistochemistry of paraffin-embedded Human thyroid cancer tissue using TA322907 (SNAP25 Antibody) at dilution 1/25, treated with fusion protein. (Original magnification: ×200)