

Product datasheet for **TA322906**

SPAG4 Rabbit Polyclonal Antibody

Product data:

Product Type:	Primary Antibodies
Applications:	IHC, WB
Recommended Dilution:	WB: 200-1000 WB positive control: Human bladder transitional cell carcinoma grade 2-3 tissue lysate IHC: 25-100 Positive control: Human cervical cancer Predicted cell location: Cytoplasm and Nucleus
Reactivity:	Human
Host:	Rabbit
Isotype:	IgG
Clonality:	Polyclonal
Immunogen:	Synthetic peptide corresponding to a region derived from 32-47 amino acids of human sperm associated antigen 4
Formulation:	PBS pH7.3, 0.05% NaN ₃ , 50% glycerol
Concentration:	lot specific
Purification:	Antigen affinity purification
Conjugation:	Unconjugated
Storage:	Store at -20°C as received.
Stability:	Stable for 12 months from date of receipt.
Predicted Protein Size:	48 kDa
Gene Name:	sperm associated antigen 4
Database Link:	NP_003107 Entrez Gene 6676 Human Q9NPE6



[View online »](#)

Background:

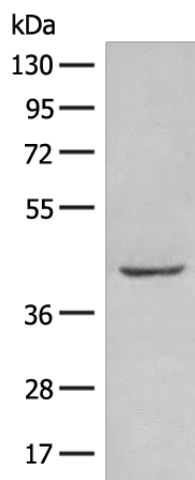
The mammalian sperm flagellum contains two cytoskeletal structures associated with the axoneme: the outer dense fibers surrounding the axoneme in the midpiece and principal piece and the fibrous sheath surrounding the outer dense fibers in the principal piece of the tail. Defects in these structures are associated with abnormal tail morphology; reduced sperm motility; and infertility. In the rat; the protein encoded by this gene associates with an outer dense fiber protein via a leucine zipper motif and localizes to the microtubules of the manchette and axoneme during sperm tail development.

Synonyms:

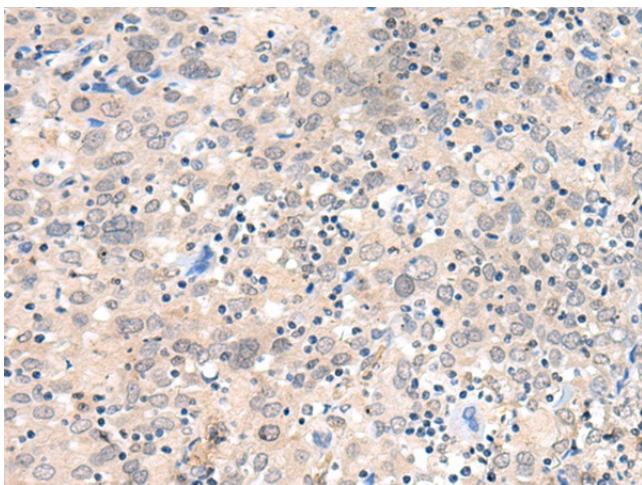
CT127; SUN4

Protein Families:

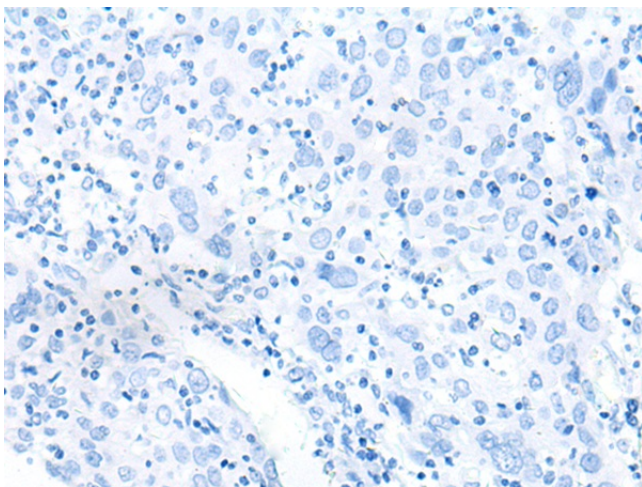
Transmembrane

Product images:

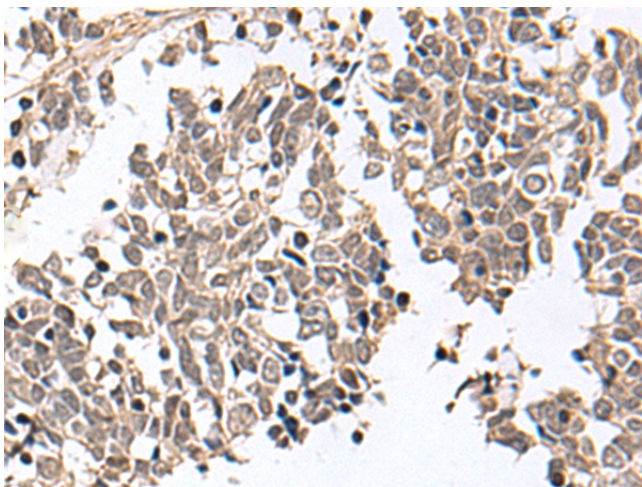
Gel: 8%SDS-PAGE
Lysate: 40 µg
Lane: Human bladder transitional cell carcinoma grade 2-3 tissue lysate
Primary antibody: TA322906 (SPAG4 Antibody) at dilution 1/200
Secondary antibody: Goat anti rabbit IgG at 1/8000 dilution
Exposure time: 1 minute



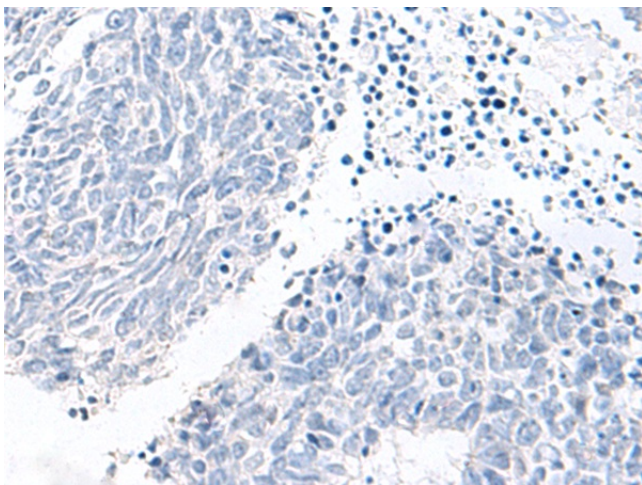
Immunohistochemistry of paraffin-embedded Human cervical cancer tissue using TA322906 (SPAG4 Antibody) at dilution 1/20 (Original magnification: ×200)



Immunohistochemistry of paraffin-embedded Human cervical cancer tissue using TA322906 (SPAG4 Antibody) at dilution 1/20, treated with synthetic peptide. (Original magnification: x200)



Immunohistochemistry of paraffin-embedded Human lung cancer tissue using TA322906 (SPAG4 Antibody) at dilution 1/20 (Original magnification: x200)



Immunohistochemistry of paraffin-embedded Human lung cancer tissue using TA322906 (SPAG4 Antibody) at dilution 1/20, treated with synthetic peptide. (Original magnification: x200)