

## Product datasheet for **TA322905**

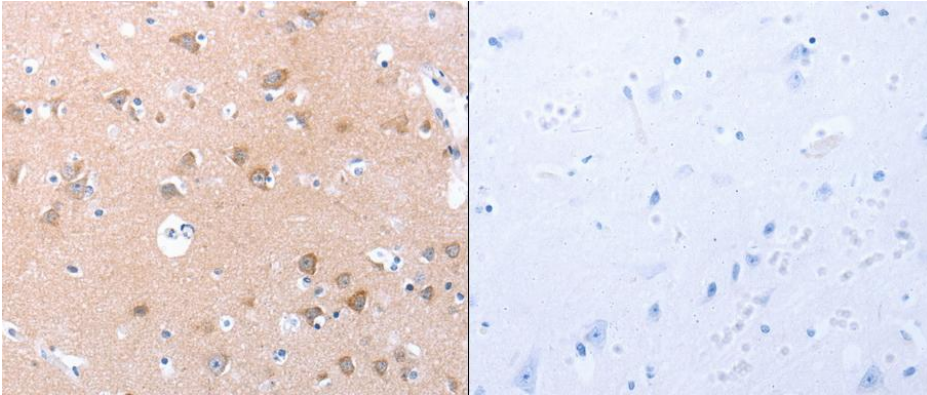
### SPAG4 Rabbit Polyclonal Antibody

#### Product data:

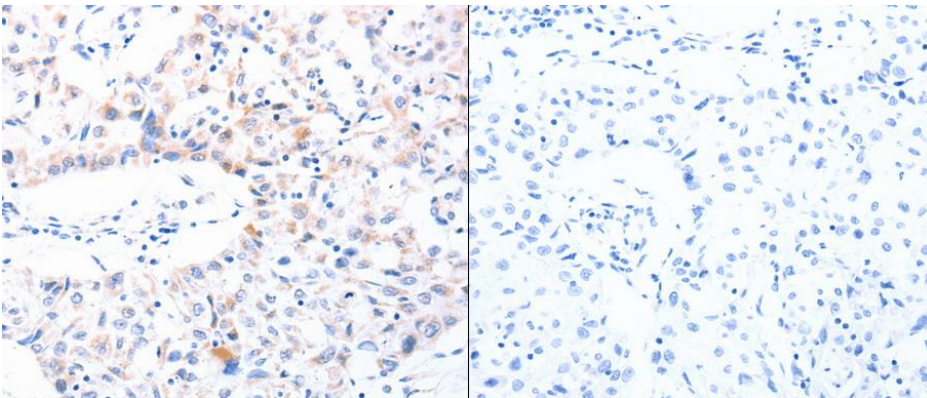
Product Type:	Primary Antibodies
Applications:	IHC
Recommended Dilution:	ELISA: 1:1000-5000, IHC: 1:25-100
Reactivity:	Human, Mouse, Rat
Host:	Rabbit
Isotype:	IgG
Clonality:	Polyclonal
Immunogen:	Synthetic peptide corresponding to a region derived from 32-47 amino acids of human sperm associated antigen 4
Formulation:	PBS pH7.3, 0.05% NaN <sub>3</sub> , 50% glycerol
Concentration:	lot specific
Purification:	Antigen affinity purification
Conjugation:	Unconjugated
Storage:	Store at -20°C as received.
Stability:	Stable for 12 months from date of receipt.
Gene Name:	sperm associated antigen 4
Database Link:	<a href="#">NP_003107</a> <a href="#">Entrez Gene 83623 Rat</a> <a href="#">Entrez Gene 245865 Mouse</a> <a href="#">Entrez Gene 6676 Human</a> <a href="#">Q9NPE6</a>
Background:	The mammalian sperm flagellum contains two cytoskeletal structures associated with the axoneme: the outer dense fibers surrounding the axoneme in the midpiece and principal piece and the fibrous sheath surrounding the outer dense fibers in the principal piece of the tail. Defects in these structures are associated with abnormal tail morphology; reduced sperm motility; and infertility. In the rat; the protein encoded by this gene associates with an outer dense fiber protein via a leucine zipper motif and localizes to the microtubules of the manchette and axoneme during sperm tail development.
Synonyms:	CT127; SUN4
Protein Families:	Transmembrane



[View online »](#)

**Product images:**

Predicted cell location: Cytoplasm. Positive control: Human brain and lung cancer tissue. Recommended dilution: 1/25-100 The image on the left is immunohistochemistry of paraffin-embedded human brain tissue using SPAG4 antibody at dilution 1/30, on the right is treated with the synthetic peptide. (Original magnification:x 200)



Predicted cell location: Cytoplasm. Positive control: Human brain and lung cancer tissue. Recommended dilution: 1/25-100 The image on the left is immunohistochemistry of paraffin-embedded human lung cancer tissue using SPAG4 antibody at dilution 1/30, on the right is treated with the synthetic peptide. (Original magnification:x200)