

## Product datasheet for **TA322901**

### SPAG1 Rabbit Polyclonal Antibody

#### Product data:

Product Type:	Primary Antibodies
Applications:	IHC, WB
Recommended Dilution:	WB: 500-2000 WB positive control: Human colon tissue IHC: 25-100 Positive control: Human ovarian cancer Predicted cell location: Cytoplasm
Reactivity:	Human
Host:	Rabbit
Isotype:	IgG
Clonality:	Polyclonal
Immunogen:	Synthetic peptide corresponding to a region derived from 760-774 amino acids of Human sperm associated antigen 1
Formulation:	PBS pH7.3, 0.05% NaN <sub>3</sub> , 50% glycerol
Concentration:	lot specific
Purification:	Antigen affinity purification
Conjugation:	Unconjugated
Storage:	Store at -20°C as received.
Stability:	Stable for 12 months from date of receipt.
Predicted Protein Size:	104 kDa
Gene Name:	sperm associated antigen 1
Database Link:	<a href="#">NP_003105</a> <a href="#">Entrez Gene 6674 Human</a> <a href="#">Q07617</a>



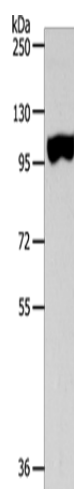
[View online »](#)

**Background:**

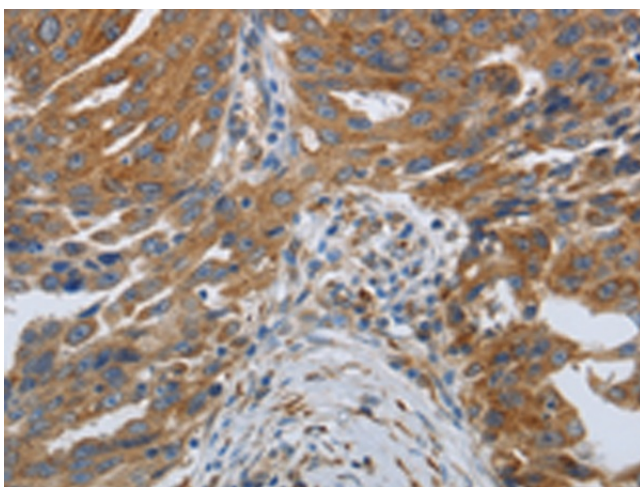
The correlation of anti-sperm antibodies with cases of unexplained infertility implicates a role for these antibodies in blocking fertilization. Improved diagnosis and treatment of immunologic infertility; as well as identification of proteins for targeted contraception; are dependent on the identification and characterization of relevant sperm antigens. The protein expressed by this gene is recognized by anti-sperm agglutinating antibodies from an infertile woman. Furthermore; immunization of female rats with the recombinant human protein reduced fertility. This protein localizes to the plasma membrane of germ cells in the testis and to the post-acrosomal plasma membrane of mature spermatozoa. Recombinant polypeptide binds GTP and exhibits GTPase activity. Thus; this protein may regulate GTP signal transduction pathways involved in spermatogenesis and fertilization. Two transcript variants of this gene encode the same protein.

**Synonyms:**

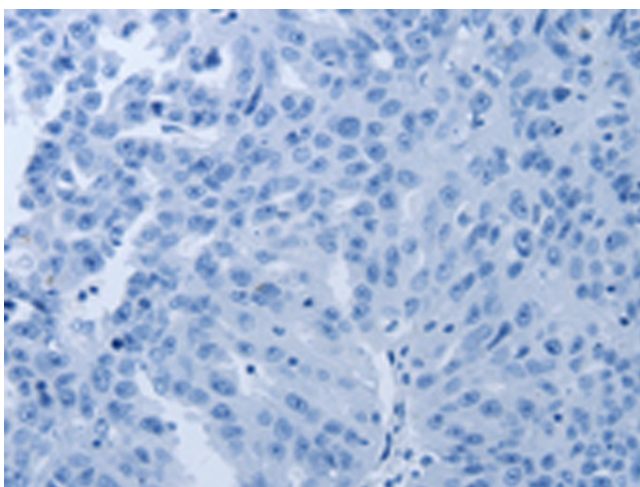
CILD28; CT140; HEL-S-268; HSD-3.8; SP75; TPIS

**Product images:**


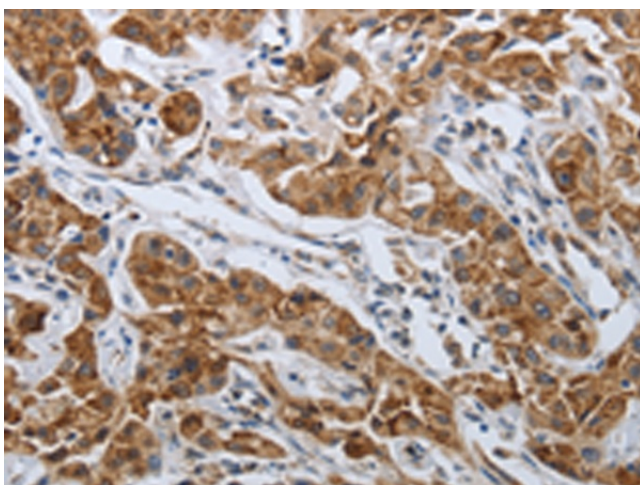
Gel: 8%SDS-PAGE  
Lysate: 40 µg  
Lane: Human colon tissue  
Primary antibody: TA322901 (SPAG1 Antibody) at dilution 1/600  
Secondary antibody: Goat anti rabbit IgG at 1/8000 dilution  
Exposure time: 2 minutes



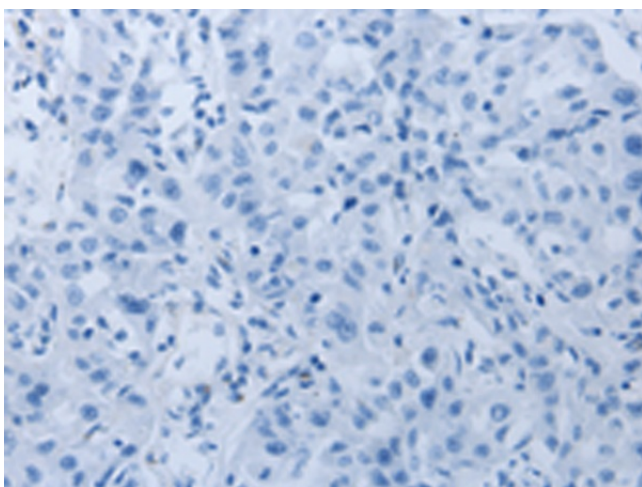
Immunohistochemistry of paraffin-embedded Human ovarian cancer tissue using TA322901 (SPAG1 Antibody) at dilution 1/25 (Original magnification: ×200)



Immunohistochemistry of paraffin-embedded Human ovarian cancer tissue using TA322901 (SPAG1 Antibody) at dilution 1/25, treated with synthetic peptide. (Original magnification: ×200)



Immunohistochemistry of paraffin-embedded Human lung cancer tissue using TA322901 (SPAG1 Antibody) at dilution 1/25 (Original magnification: ×200)



Immunohistochemistry of paraffin-embedded Human lung cancer tissue using TA322901 (SPAG1 Antibody) at dilution 1/25, treated with synthetic peptide. (Original magnification: ×200)