

Product datasheet for **TA322899**

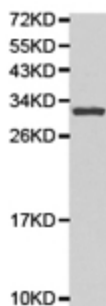
SPINK1 Rabbit Polyclonal Antibody

Product data:

Product Type:	Primary Antibodies
Applications:	WB
Recommended Dilution:	WB: 1:500-2000
Reactivity:	Human, Mouse, Rat
Host:	Rabbit
Isotype:	IgG
Clonality:	Polyclonal
Immunogen:	Fusion protein corresponding to a region derived from 24-79 amino acids of human serine peptidase inhibitor, Kazal type 1
Formulation:	PBS pH7.3, 0.05% NaN ₃ , 50% glycerol
Concentration:	lot specific
Purification:	Antigen affinity purification
Conjugation:	Unconjugated
Storage:	Store at -20°C as received.
Stability:	Stable for 12 months from date of receipt.
Predicted Protein Size:	9 kDa
Gene Name:	serine peptidase inhibitor, Kazal type 1
Database Link:	NP_003113 Entrez Gene 20730 MouseEntrez Gene 266602 RatEntrez Gene 6690 Human P00995
Background:	The protein encoded by this gene is a trypsin inhibitor, which is secreted from pancreatic acinar cells into pancreatic juice. It is thought to function in the prevention of trypsin-catalyzed premature activation of zymogens within the pancreas and the pancreatic duct. Mutations in this gene are associated with hereditary pancreatitis and tropical calcific pancreatitis.
Synonyms:	PCTT; PSTI; Spink3; TATI; TCP
Protein Families:	Druggable Genome, Secreted Protein



[View online »](#)

Product images:

Predicted band size: 9 kDa. Positive control: GST-SPINK1 recombinant protein lysate.

Recommended dilution: 1/500-2000. (Gel: 12%SDS-PAGE Lysate: 40 ug Primary antibody: 1/500 dilution Secondary antibody: Goat anti Rabbit IgG - H&L (HRP) at 1/10000 dilution Exposure time: 1 minute)