

Product datasheet for **TA322898**

Serum Response Factor (SRF) Rabbit Polyclonal Antibody

Product data:

Product Type:	Primary Antibodies
Applications:	IHC, WB
Recommended Dilution:	ELISA: 1:2000-5000, WB: 1:200-1000, IHC: 1:50-200
Reactivity:	Human, Mouse, Rat
Host:	Rabbit
Isotype:	IgG
Clonality:	Polyclonal
Immunogen:	Synthetic peptide corresponding to a region derived from 495-508 amino acids of human serum response factor (c-fos serum response element-binding transcription factor)
Formulation:	PBS pH7.3, 0.05% NaN ₃ , 50% glycerol
Concentration:	lot specific
Purification:	Antigen affinity purification
Conjugation:	Unconjugated
Storage:	Store at -20°C as received.
Stability:	Stable for 12 months from date of receipt.
Predicted Protein Size:	52 kDa
Gene Name:	serum response factor
Database Link:	NP_003122 Entrez Gene 20807 Mouse Entrez Gene 501099 Rat Entrez Gene 6722 Human P11831
Background:	This gene encodes a ubiquitous nuclear protein that stimulates both cell proliferation and differentiation. It is a member of the MADS (MCM1, Agamous, Deficiens, and SRF) box superfamily of transcription factors. This protein binds to the serum response element (SRE) in the promoter region of target genes. This protein regulates the activity of many immediate-early genes, for example c-fos, and thereby participates in cell cycle regulation, apoptosis, cell growth, and cell differentiation. This gene is the downstream target of many pathways; for example, the mitogen-activated protein kinase pathway (MAPK) that acts through the ternary complex factors (TCFs).



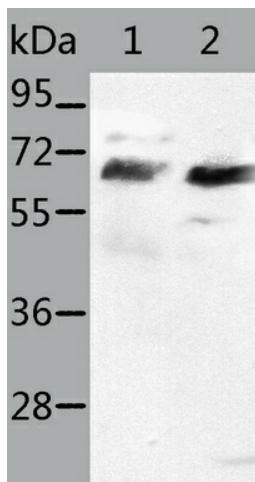
[View online »](#)

Synonyms: MCM1

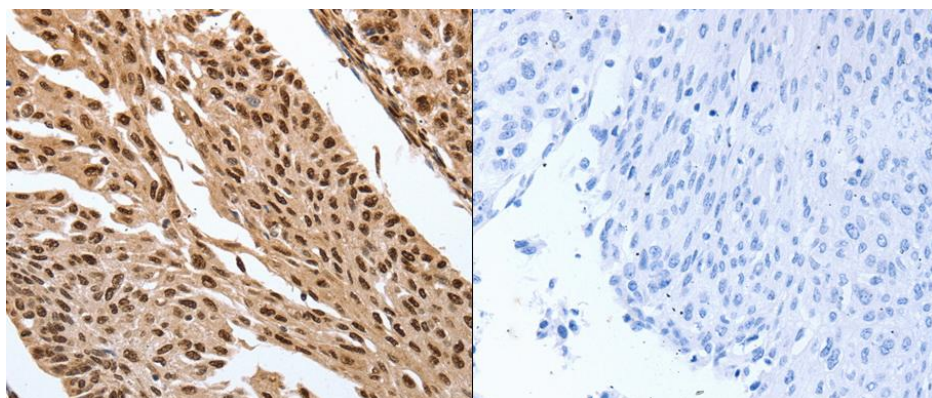
Protein Families: Druggable Genome, Transcription Factors

Protein Pathways: MAPK signaling pathway

Product images:



Predicted band size: 52kDa. Positive control: HT-29 and Jurkat cell lysate. Recommended dilution: 1/200-1000. (Gel: 10%SDS-PAGE Lane 1: HT-29 cell lysate Lane 2: Jurkat cell lysate Lysates: 50 ug per lane Primary antibody: 1/400 dilution Secondary antibody: Goat anti Rabbit IgG - H&L (HRP) at 1/8000 dilution Exposure time: 1 minute)



Predicted cell location: Nucleus. Positive control: Human cervical cancer tissue. Recommended dilution: 1/50-200 The image on the left is immunohistochemistry of paraffin-embedded human cervical cancer tissue using SRF antibody at dilution 1/30, on the right is treated with the synthetic peptide. (Original magnification:x200)