

Product datasheet for **TA322891S**

Synaptotagmin V (SYT5) Rabbit Polyclonal Antibody

Product data:

Product Type:	Primary Antibodies
Applications:	IHC, WB
Recommended Dilution:	WB: 500-2000 WB positive control: Human cerebrum tissue, PC3 cell lysates IHC: 50-200 Positive control: Human esophagus cancer Predicted cell location: Cytoplasm
Reactivity:	Human, Mouse, Rat
Host:	Rabbit
Isotype:	IgG
Clonality:	Polyclonal
Immunogen:	Fusion protein corresponding to a region derived from 46-200 amino acids of human synaptotagmin V
Formulation:	PBS pH7.3, 0.05% NaN ₃ , 50% glycerol
Purification:	Antigen affinity purification
Conjugation:	Unconjugated
Storage:	Store at -20°C as received.
Stability:	Stable for 12 months from date of receipt.
Predicted Protein Size:	43 kDa
Gene Name:	synaptotagmin 5
Database Link:	NP_003171 Entrez Gene 53420 Mouse Entrez Gene 54309 Rat Entrez Gene 6861 Human O00445



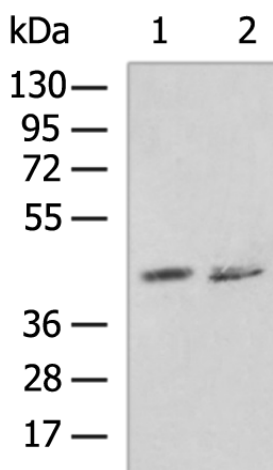
[View online »](#)

Background: Synaptotagmins; such as SYT5; are a family of type III membrane proteins characterized by cytoplasmic repeats related to protein kinase C regulatory (C2) domains; which are thought to bind calcium. Synaptotagmins may act both as negative regulators of vesicle fusion; allowing fusion in the presence of calcium; and as calcium receptors or sensor molecules. May be involved in Ca²⁺-dependent exocytosis of secretory vesicles through Ca²⁺ and phospholipid binding to the C2 domain or may serve as Ca²⁺ sensors in the process of vesicular trafficking and exocytosis. Regulates the Ca²⁺-dependent secretion of norepinephrine in PC12 cells. Required for export from the endocytic recycling compartment to the cell surface.

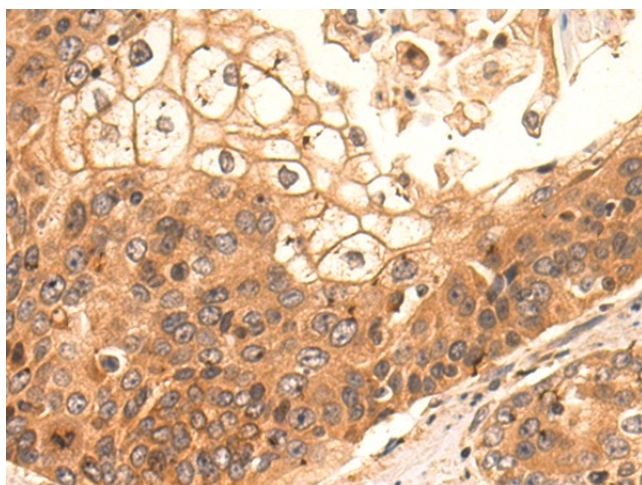
Synonyms: synaptotagmin 5; synaptotagmin V

Protein Families: Secreted Protein, Transmembrane

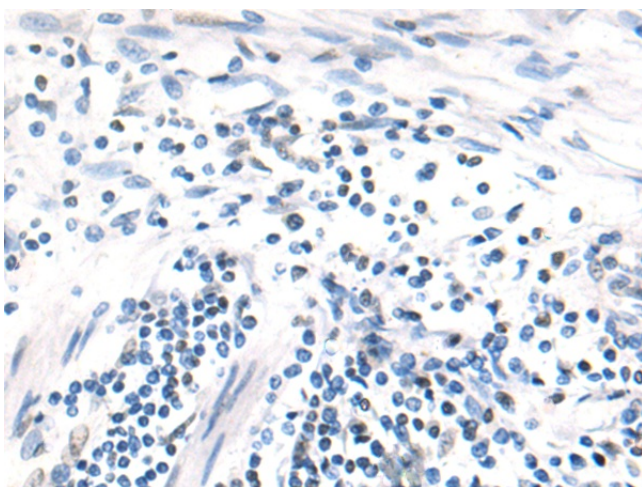
Product images:



Gel: 8%SDS-PAGE
 Lysate: 40 µg
 Lane 1-2: Human cerebrum tissue
 PC3 cell lysates
 Primary antibody: [TA322891] (SYT5 Antibody) at dilution 1/800
 Secondary antibody: Goat anti rabbit IgG at 1/5000 dilution
 Exposure time: 2 minutes



Immunohistochemistry of paraffin-embedded Human esophagus cancer tissue using [TA322891] (SYT5 Antibody) at dilution 1/60 (Original magnification: ×200)



Immunohistochemistry of paraffin-embedded Human esophagus cancer tissue using [TA322891] (SYT5 Antibody) at dilution 1/60, treated with fusion protein. (Original magnification: ×200)