

## Product datasheet for **TA322890S**

### Synaptotagmin V (SYT5) Rabbit Polyclonal Antibody

#### Product data:

Product Type:	Primary Antibodies
Applications:	IHC, WB
Recommended Dilution:	WB: 500-2000 WB positive control: Human cerebrum tissue lysate IHC: 50-200 Positive control: Human esophagus cancer Predicted cell location: Cytoplasm
Reactivity:	Human, Mouse, Rat
Host:	Rabbit
Isotype:	IgG
Clonality:	Polyclonal
Immunogen:	Fusion protein corresponding to a region derived from 46-200 amino acids of human synaptotagmin V
Formulation:	PBS pH7.3, 0.05% NaN <sub>3</sub> , 50% glycerol
Purification:	Antigen affinity purification
Conjugation:	Unconjugated
Storage:	Store at -20°C as received.
Stability:	Stable for 12 months from date of receipt.
Predicted Protein Size:	43 kDa
Gene Name:	synaptotagmin 5
Database Link:	<a href="#">NP_003171</a> <a href="#">Entrez Gene 53420 Mouse</a> <a href="#">Entrez Gene 54309 Rat</a> <a href="#">Entrez Gene 6861 Human</a> <a href="#">O00445</a>



[View online »](#)

**Background:**

Synaptotagmins; such as SYT5; are a family of type III membrane proteins characterized by cytoplasmic repeats related to protein kinase C regulatory (C2) domains; which are thought to bind calcium. Synaptotagmins may act both as negative regulators of vesicle fusion; allowing fusion in the presence of calcium; and as calcium receptors or sensor molecules. May be involved in Ca<sup>2+</sup>-dependent exocytosis of secretory vesicles through Ca<sup>2+</sup> and phospholipid binding to the C2 domain or may serve as Ca<sup>2+</sup> sensors in the process of vesicular trafficking and exocytosis. Regulates the Ca<sup>2+</sup>-dependent secretion of norepinephrine in PC12 cells. Required for export from the endocytic recycling compartment to the cell surface.

**Synonyms:**

synaptotagmin 5; synaptotagmin V

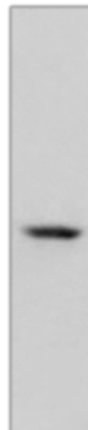
**Protein Families:**

Secreted Protein, Transmembrane

**Product images:**

kDa

130 —  
95 —  
72 —  
55 —  
36 —  
28 —  
17 —



Gel: 8%SDS-PAGE

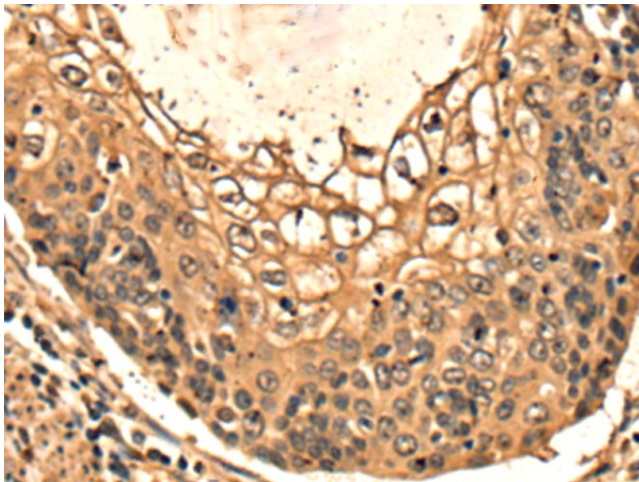
Lysate: 40 µg

Lane: Human cerebrum tissue lysate

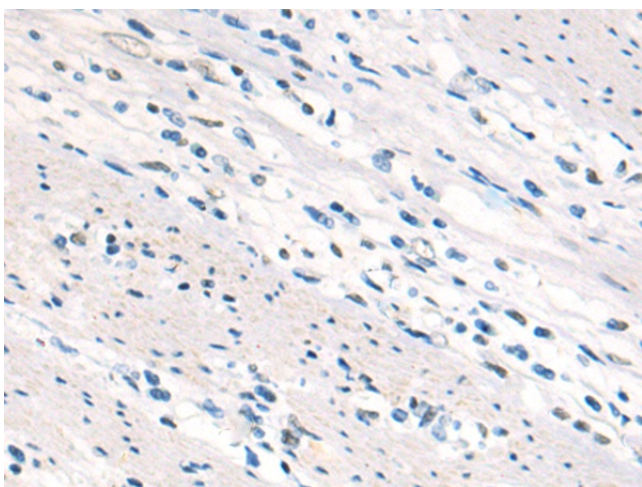
Primary antibody: [TA322890] (SYT5 Antibody) at dilution 1/500

Secondary antibody: Goat anti rabbit IgG at 1/5000 dilution

Exposure time: 1 second



Immunohistochemistry of paraffin-embedded Human esophagus cancer tissue using [TA322890] (SYT5 Antibody) at dilution 1/50 (Original magnification: ×200)



Immunohistochemistry of paraffin-embedded Human esophagus cancer tissue using [TA322890] (SYT5 Antibody) at dilution 1/50, treated with fusion protein. (Original magnification:  $\times 200$ )