

Product datasheet for **TA322888**

TCF7 Rabbit Polyclonal Antibody

Product data:

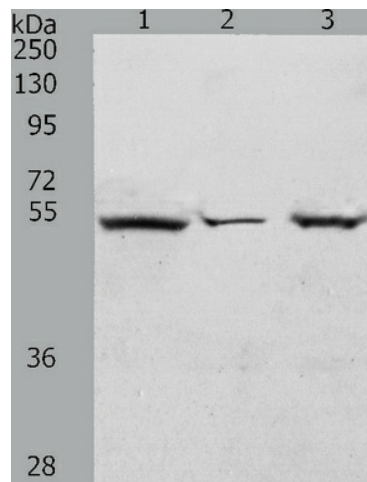
Product Type:	Primary Antibodies
Applications:	WB
Recommended Dilution:	ELISA: 1:1000-5000, WB: 1:200-1000
Reactivity:	Human, Mouse, Rat
Host:	Rabbit
Isotype:	IgG
Clonality:	Polyclonal
Immunogen:	Synthetic peptide corresponding to a region derived from 255-268 amino acids of human transcription factor 7 (T-cell specific, HMG-box)
Formulation:	PBS pH7.3, 0.05% NaN ₃ , 50% glycerol
Concentration:	lot specific
Purification:	Antigen affinity purification
Conjugation:	Unconjugated
Storage:	Store at -20°C as received.
Stability:	Stable for 12 months from date of receipt.
Predicted Protein Size:	42 kDa
Gene Name:	transcription factor 7 (T-cell specific, HMG-box)
Database Link:	NP_003193 Entrez Gene 21414 MouseEntrez Gene 363595 RatEntrez Gene 6932 Human P36402
Background:	The protein encoded by this gene is a transcriptional activator that plays an important role in lymphocyte differentiation. This gene is expressed predominantly in T-cells. The encoded protein can bind an enhancer element and activate the CD3E gene; and it also may repress the CTNNB1 and TCF7L2 genes through a feedback mechanism. Several transcript variants encoding different isoforms have been found for this gene.
Synonyms:	TCF-1
Protein Families:	Druggable Genome, ES Cell Differentiation/IPS, Transcription Factors



[View online »](#)

Protein Pathways:

Acute myeloid leukemia, Adherens junction, Arrhythmogenic right ventricular cardiomyopathy (ARVC), Basal cell carcinoma, Colorectal cancer, Endometrial cancer, Melanogenesis, Pathways in cancer, Prostate cancer, Thyroid cancer, Wnt signaling pathway

Product images:

Predicted band size: 42 kDa. Positive control: HeLa cell, mouse heart tissue and Jurkat cell lysate. Recommended dilution: 1/200-1000. (Gel: 10%SDS-PAGE Lane 1: HeLa cell lysate Lane 2: Mouse heart tissue lysate Lane 3: Jurkat cell lysate Lysates: 40 ug per lane Primary antibody: 1/300 dilution Secondary antibody: Goat anti Rabbit IgG - H&L (HRP) at 1/10000 dilution Exposure time: 1 minute)